



**RUSSELL  
SIMPSON**

Onslow Mews West

ONSLOW MEWS WEST  
SOUTH KENSINGTON SW7

Onslow Mews West

Sold

BEDROOMS 3	INTERNAL  1,875 SQ FT  174 SQM	OUTDOOR  —	COUNCIL TAX  H
BATHROOMS 2		EPC  C	TENURE  Freehold







## The Property

The house is arranged over three floors and has been refurbished to a high standard throughout.

There is excellent entertaining space on the ground and lower ground floor with the bedrooms arranged over the first floor. The property benefits from excellent storage including a wine cellar in the basement. This property has access to Onslow Square communal gardens.



# The Neighbourhood

Onslow Mews West is a quiet cobbled cul-de-sac located just off Onslow Square and close to South Kensington underground station and all the amenities of the Old Brompton Road and Fulham Road.



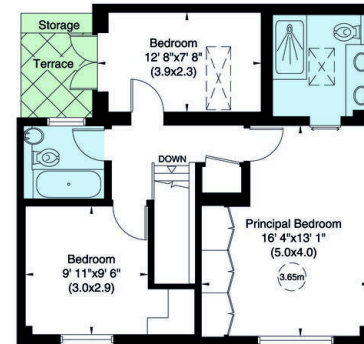
## Onslow Mews West, SW7

Gross internal area (approx.)

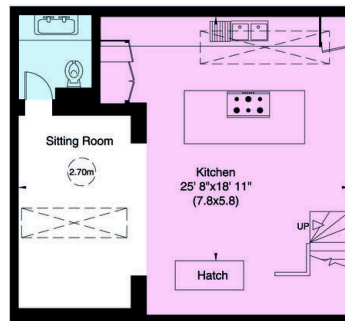
174 Sq m (1875 Sq ft) Including Garage and Wine Cellar

For identification only, Not to Scale

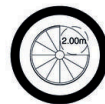
capital 020 8671 7722



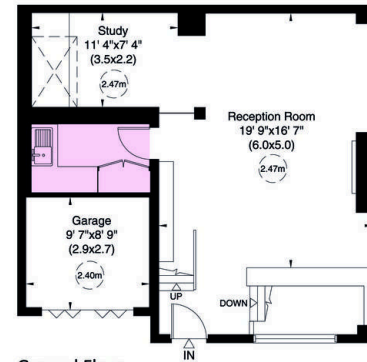
First Floor



Basement 1



Basement 2  
Wine Cellar



Ground Floor

Not to scale, for guidance only and must not be relied upon as a statement of fact. All measurements and areas are approximate only (and have been prepared in accordance with the current edition of the RICS Code of Measuring Practice).

**RUSSELL  
SIMPSON**

---

## Contact Us

+44 (0) 20 7225 0277

Contact us

[info@russellsimpson.co.uk](mailto:info@russellsimpson.co.uk)

---

## Sydney Street

+44 (0) 20 7225 0277

151A Sydney Street

London

SW3 6NT

[chelsea@russellsimpson.co.uk](mailto:chelsea@russellsimpson.co.uk)

---

## Kensington Square

+44 (0) 20 3761 9691

13 Kensington Square

London

W8 5HD

[kensington@russellsimpson.co.uk](mailto:kensington@russellsimpson.co.uk)