



RUSSELL SIMPSON

Spacious mews house with
contemporary interiors and off-
street parking

ONSLow MEWS WEST
SOUTH KENSINGTON SW7

Onslow Mews West

£2,995,000

BEDROOMS 3	INTERNAL 1,826 SQ FT 169 SQM	OUTDOOR 101 SQ FT	COUNCIL TAX RBKC, H
BATHROOMS 3		EPC C	TENURE Freehold



The Property

Three bedroom house, with a terrace, on a cobbled mews close to South Kensington underground station

Entering the house on the ground floor, the front door opens onto a generous reception room with enough space for separate dining and seating areas. This floor also contains a fitted kitchen, with access to the garage.

CGI images have been used.



Indoor Spaces

The lower ground floor is accessed via a stylish cantilever staircase. It features another spacious reception room and a room ready to be furnished as a second kitchen, or utility room. Another room on this floor has an ensuite bathroom and could be used as either a fourth bedroom, or a gym.

img 1

Kitchen

img 2

Reception





The Bedrooms

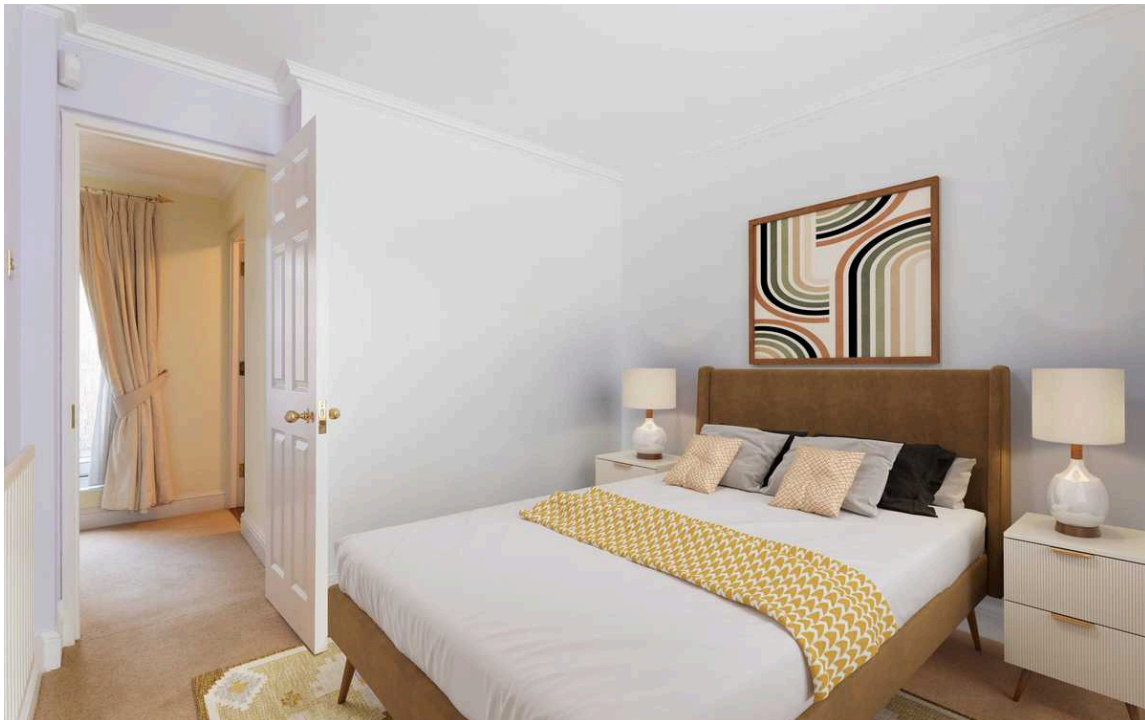
The first floor offers a principal bedroom with an ensuite bathroom and built-in storage space. The second bedroom has a bathroom next door, while a possible third bedroom, currently set up as a study, completes this floor.

img 1

Principal Bedroom

img 2

Double Bedroom



The Design

The house is decorated in a clean contemporary style, but with the possibility to be reimagined by future owners. It is, unusually, fitted throughout with Rehau Heritage double-glazed windows (approved by RBKO), and Mitsubishi Electric inverter air conditioning on the lower-ground floor and partially upstairs.





The Neighbourhood

The house has a paved first-floor terrace with enough space for outdoor dining. It also has a garage, with off-street parking.

Onslow West Mews is a quiet and secluded cul-de-sac. From here, the restaurants and shops on the Old Brompton Road and the Fulham Road are a short walk away. In addition, the street is well-placed for Gloucester Road and South Kensington underground stations.

img 1

Terrace

img 2

The Mews



Onslow Mews West, SW7

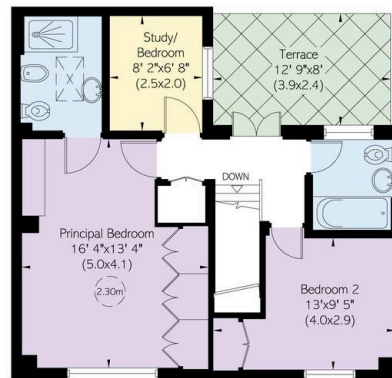
**RUSSELL
SIMPSON**

Approximate Internal Area
2,324 sq ft/ 216 sq m

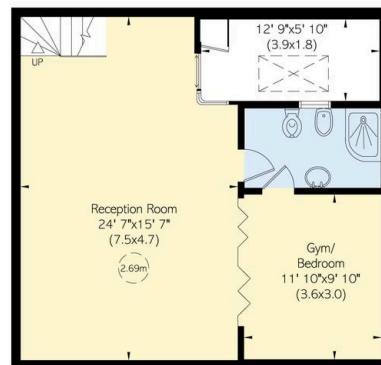
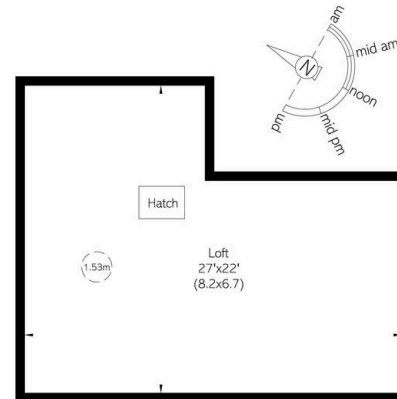
Including loft
407 sq ft/ 46 sq m

Outside Area
101 sq ft/ 9 sq m

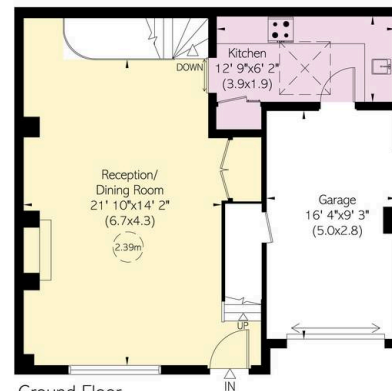
This plan is for layout guidance only. Not drawn to scale unless stated. Windows and door openings are approximate. Whilst every care is taken in the preparation of this plan, please check all dimensions, shapes, and compass bearings before making any decisions reliant upon them.



First Floor



Lower Ground Floor



Ground Floor

**RUSSELL
SIMPSON**

Contact Us

+44 (0) 20 7225 0277

151A Sydney Street
London
SW3 6NT

chelsea@russellsimpson.co.uk

In accordance with the Property Mis-Description Act 1991, the following details have been prepared in good faith, and are not intended to constitute part of an offer or contract. Any information contained herein (whether in the text, plans or photographs) is given in good faith but should not be relied upon as being a statement of representation of fact. Nothing in these Particulars shall be deemed to be a statement that the property is in good condition or otherwise nor that any services or facilities are in good working order. Any measurements of distances referred to herein are approximate only. October 2021