



RUSSELL SIMPSON

A very stylish and beautifully
presented flat on Onslow Gardens

ONSLow GARDENS
SOUTH KENSINGTON SW7

Onslow Gardens

£3,000,000

BEDROOMS 2-3	INTERNAL 1,883 SQ FT	OUTDOOR 400 SQ FT	COUNCIL RBKC
BATHROOMS 2	174 SQM	EPC D	COUNCIL TAX H
TENURE Share of freehold	LEASE LENGTH 983 YEARS	GROUND RENT —	SERVICE CHARGE £8,828 P/Y



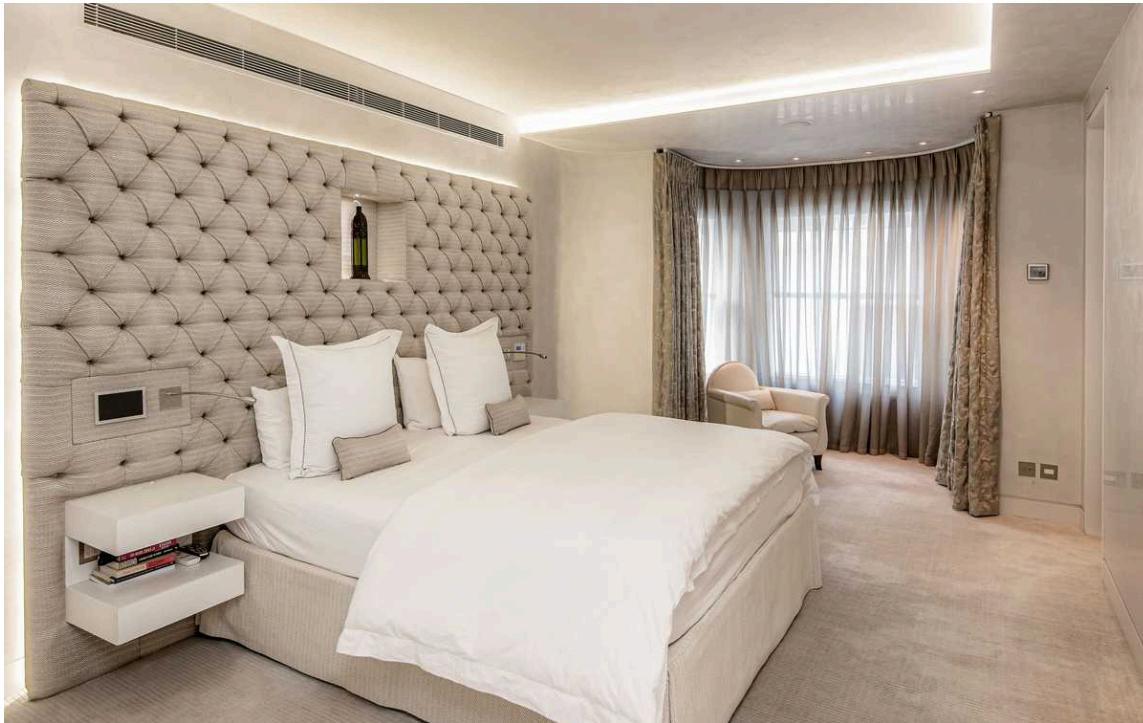
The Property

This duplex maisonette maximizes the space that is available with an abundance of contemporary features throughout the apartment.

Indoor Spaces

The reception space benefits from high ceilings which give the room a great sense of volume.

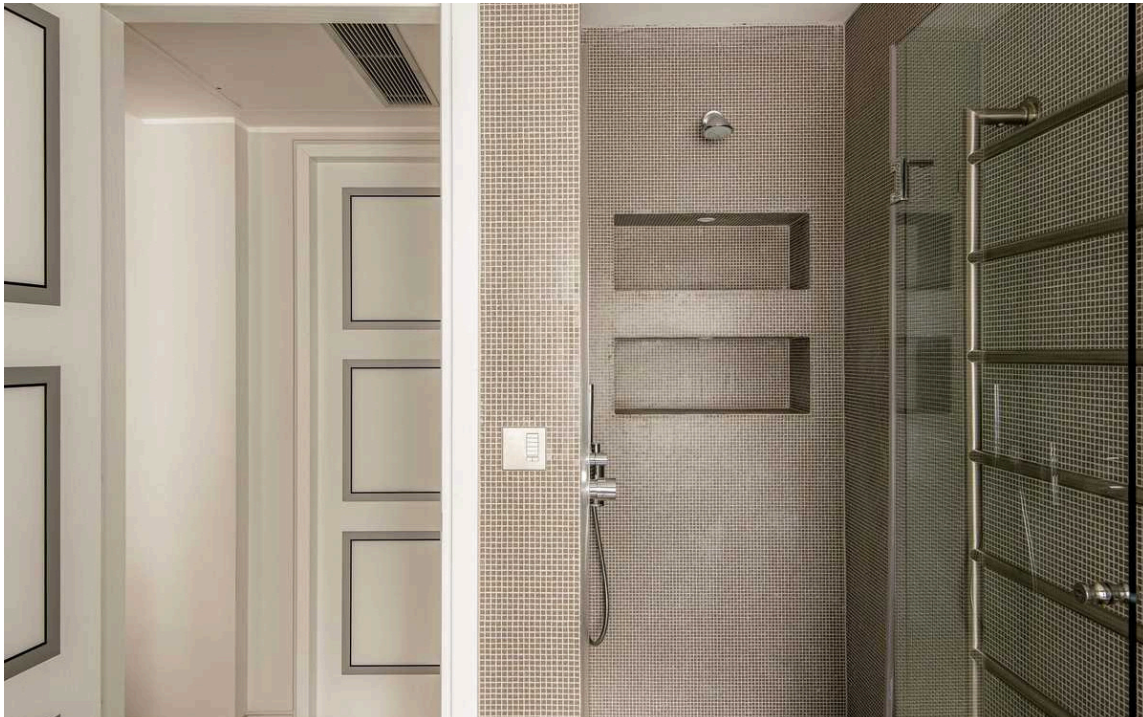




The Bedrooms

There are two double bedrooms, both with ensuite bathrooms on the lower-ground floor, along with a separate study. Both bedrooms also benefit from private walk-in wardrobes.

The vaults have been very cleverly used to incorporate a third bedroom and bathroom, as well as, a significant amount of storage space.



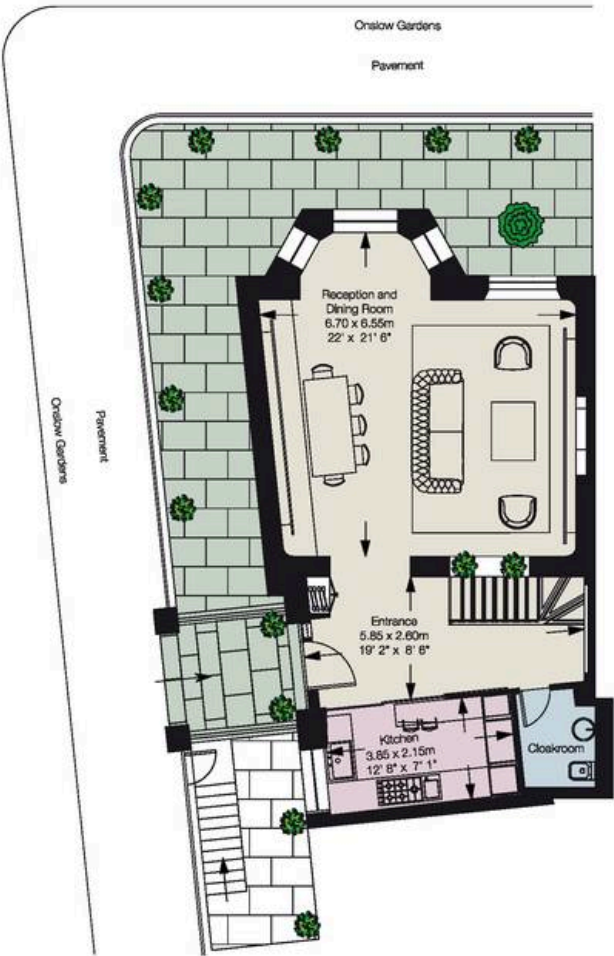
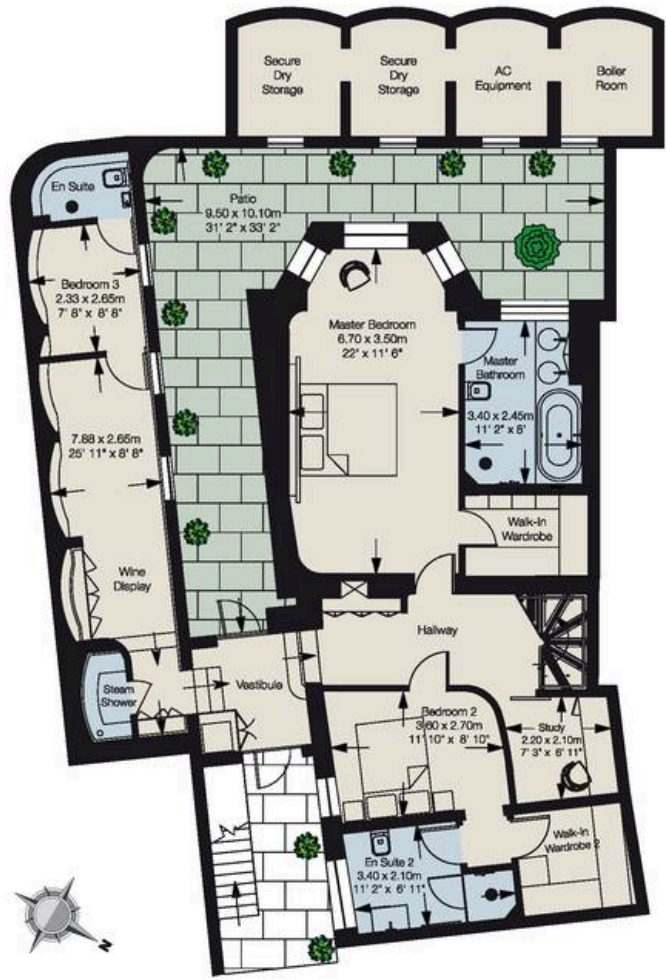
The Design





The Neighbourhood

Onslow Gardens is a hugely popular residential address with access to the enviable communal gardens and a stone's throw from the numerous shops, restaurants and bars of South Kensington.



Onslow Gardens London SW7

- Gross Internal Floor Area
1,883 sq feet / 175 sq metres
- External Patio (Demised)
400 sq feet / 37.20 sq metres
- Independent Storage
220 sq feet / 20.50 sq metres

Floorplan from August 2011 Savills brochure GSP10319-FL15M by cgp.co

**RUSSELL
SIMPSON**

Contact Us

+44 (0) 20 7225 0277

151A Sydney Street
London
SW3 6NT

chelsea@russellsimpson.co.uk