



## **RUSSELL SIMPSON**

A brand newly refurbished four-  
bedroom Georgian townhouse

OLD CHURCH STREET  
CHELSEA SW3

Old Church Street

£6,350,000

BEDROOMS 4	INTERNAL 2,896 SQ FT	OUTDOOR 429 SQ FT	COUNCIL TAX H
BATHROOMS 3	269 SQM	EPC D	TENURE Freehold





## The Property

Having undergone extensive alterations and featuring the rare advantage of a separate studio at the rear of the garden useful for a home office, the house offers the perfect balance of modern luxury living coupled with traditional period charm.





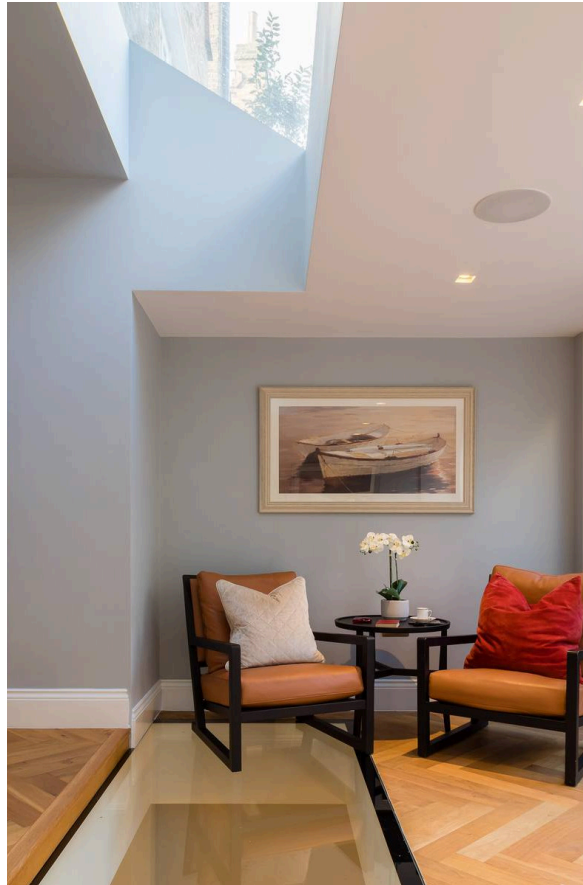
## Indoor Spaces and Garden

A key feature of the property is the excellent and highly flexible entertaining space. On the ground floor sits an elegant drawing room with bi-folding doors leading through to the private garden. The lower ground floor offers a bespoke kitchen, separate dining room and spacious sitting room. In the studio there is also a TV media room/separate accommodation.



## The Neighbourhood

Close to the River Thames and within easy walking distance of Albert Bridge and Battersea Park, Old Church Street runs off the King's Road therefore perfectly located to the ever popular shops, restaurants, amenities and transport links that Chelsea has to offer.



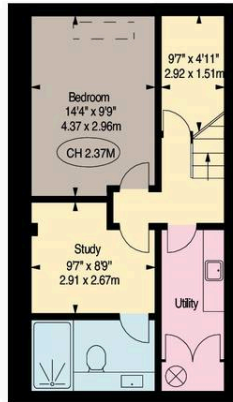


**APPROX. GROSS INTERNAL AREA**  
 2,896 sq ft / 269.04 sq m  
 (Including Studio)

**STUDIO APPROX. GROSS INTERNAL AREA**  
 381 sq ft / 35.39 sq m

This floorplan is for GUIDANCE ONLY  
 and NOT FOR VALUATION purposes.

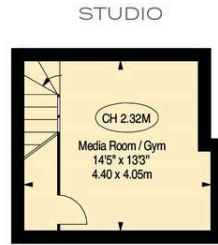
Key :  
 CH - Ceiling Height



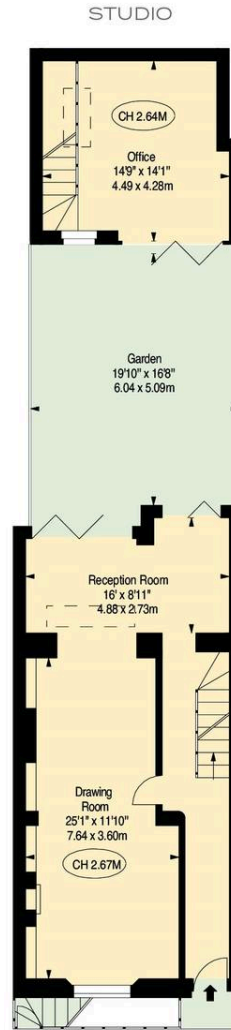
BASEMENT



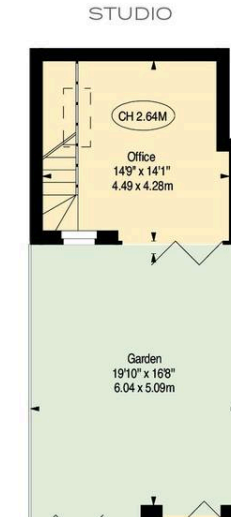
LOWER GROUND FLOOR



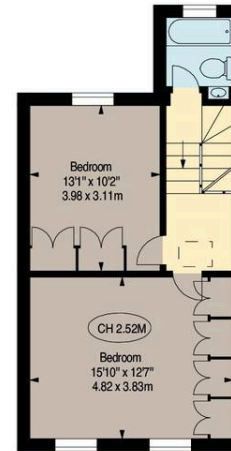
STUDIO



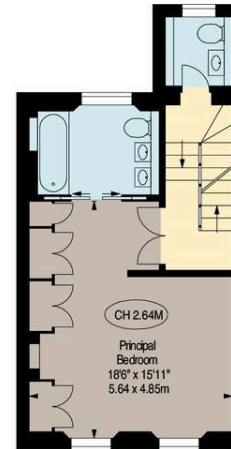
GROUND FLOOR



STUDIO



SECOND FLOOR



FIRST FLOOR

**RUSSELL  
SIMPSON**

---

## Contact Us

+44 (0) 20 7225 0277

Contact us

[info@russellsimpson.co.uk](mailto:info@russellsimpson.co.uk)

---

## Sydney Street

+44 (0) 20 7225 0277

151A Sydney Street  
London  
SW3 6NT

[chelsea@russellsimpson.co.uk](mailto:chelsea@russellsimpson.co.uk)

---

## Kensington Square

+44 (0) 20 3761 9691

13 Kensington Square  
London  
W8 5HD

[kensington@russellsimpson.co.uk](mailto:kensington@russellsimpson.co.uk)