

RUSSELL SIMPSON

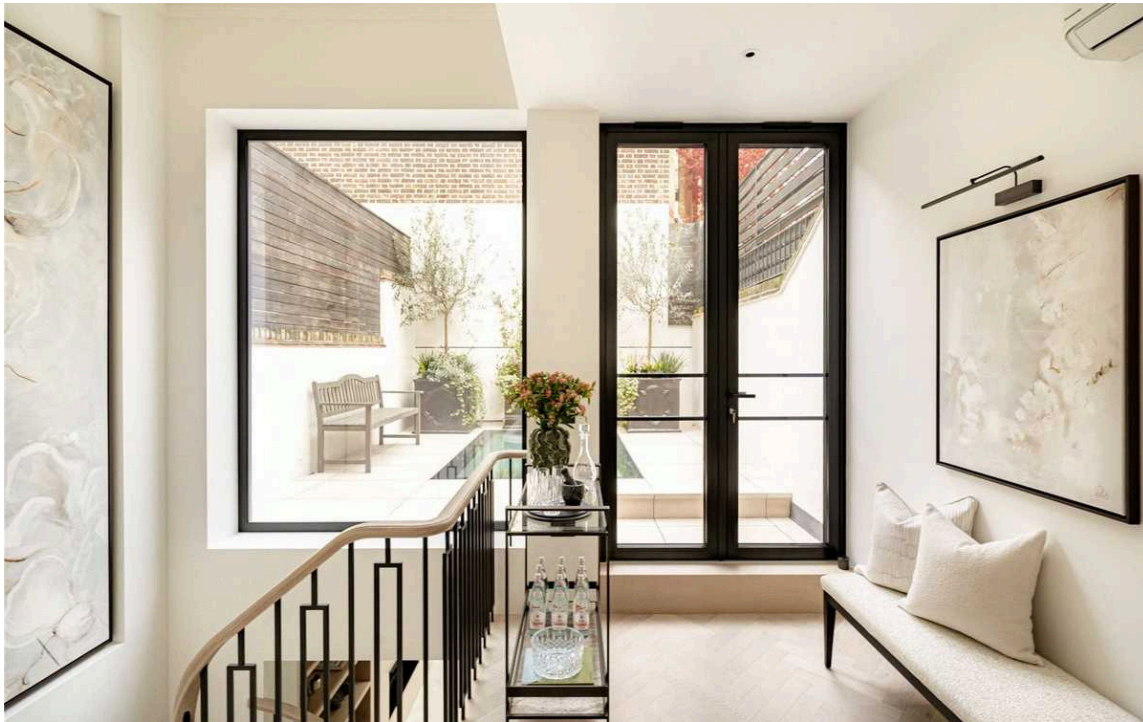
Exquisitely designed and decorated
four-bedroom house in the heart of
Knightsbridge

MONTPELIER WALK
KNIGHTSBRIDGE SW7

Montpelier Walk

£4,950,000

BEDROOMS 4	INTERNAL 1,805 SQ FT 167 SQM	OUTDOOR 396 SQ FT	COUNCIL TAX Westminster City, H
BATHROOMS 3		EPC C	TENURE Freehold



The Property

Newly renovated house with bright and spacious contemporary interiors on a colourful street close to Harrods

Stepping into the house on the ground floor, the entrance hall flows through to a spacious living area. This includes an open-plan Molteni kitchen with Miele appliances and durable Neolith worktops. Beyond is a dining area with double French doors opening onto the garden, as well as a floor-to-ceiling window filling the room with light.

A feature staircase leads down to a generous reception room with an overhead skylight and a biofuel fireplace from Planika. This space also contains a wine cellar, a utility room, and a bedroom with a bathroom next door. Finally, this floor has separate street access and underground storage.

The first floor provides a principal bedroom with considerable wardrobe space and an ensuite bathroom with a bath and shower. There are two more bedrooms on the second floor and an additional bathroom on the half-landing.

The house has been newly renovated to an exceptionally high standard. Its contemporary interiors were carefully designed to maximise the sense of light and space. They include bespoke joinery, Phillip Jefferies wallpaper, and herringbone pattern floors made from European oak, with underfloor heating and air conditioning throughout.

The house includes a paved rear garden with enough space for outdoor seating, as well as a rear terrace with delightful rooftop views.



img 1

Garden Access

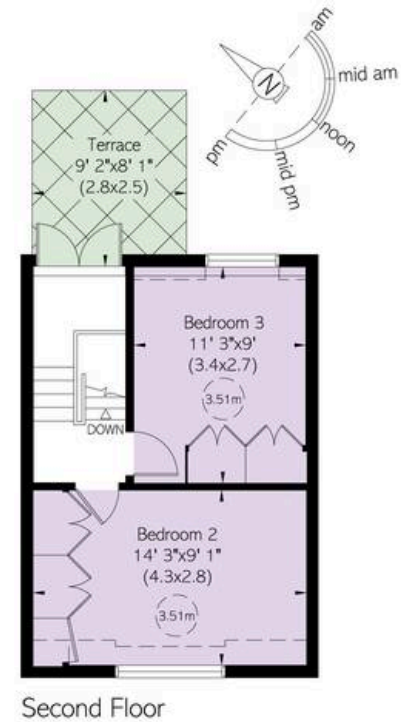
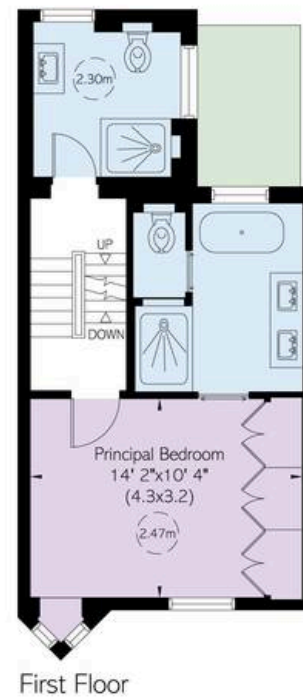
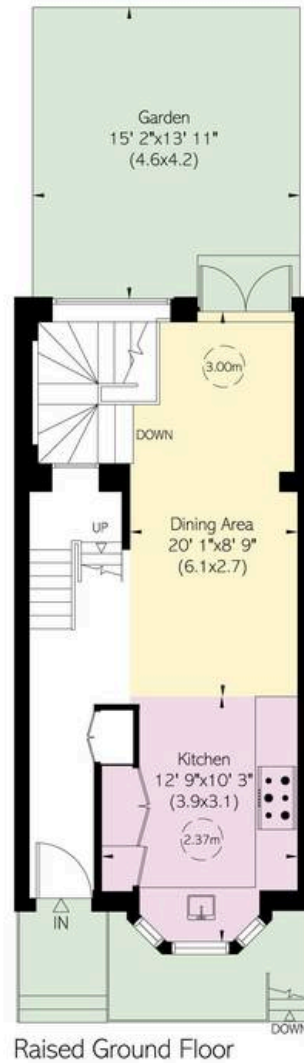
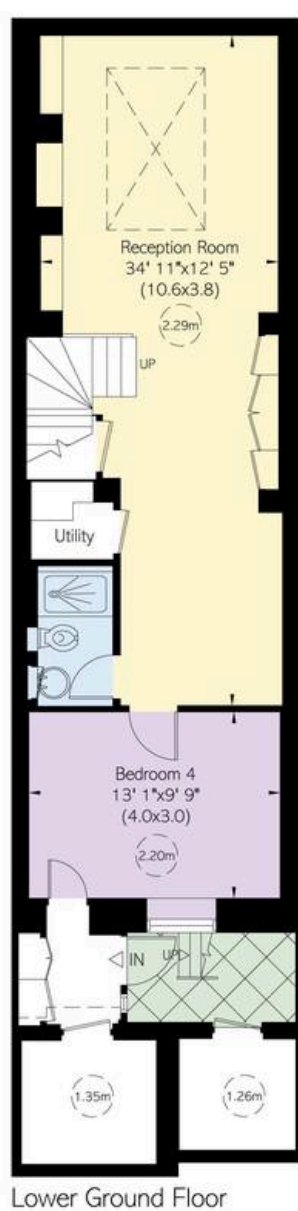
img 2

Kitchen Dining

The Neighbourhood

The property, called Montpelier Residence, lies midway between Montpelier Square and Cherval Street. This prestigious street is lined with a mix of tasteful terrace houses and mews-like cottages.

From here, the exclusive restaurants and shops of Knightsbridge are a short walk away, and so too Knightsbridge underground station. In addition, the open spaces of Hyde Park and Kensington Gardens are within easy reach. The word-class cultural venues of South Kensington are also nearby.



Montpelier Walk, SW7

**RUSSELL
SIMPSON**

Approximate Internal Area

1,805 sq ft/ 168 sq m

Including limited use area

111 sq ft/ 10 sq m

Outside Area

396 sq ft/ 37 sq m

This plan is for layout guidance only. Not drawn to scale unless stated. Windows and door openings are approximate. Whilst every care is taken in the preparation of this plan, please check all dimensions, shapes, and compass bearings before making any decisions reliant upon them.

**RUSSELL
SIMPSON**

Contact Us

+44 (0) 20 7225 0277

151A Sydney Street
London
SW3 6NT

chelsea@russellsimpson.co.uk

In accordance with the Property Mis-Description Act 1991, the following details have been prepared in good faith, and are not intended to constitute part of an offer or contract. Any information contained herein (whether in the text, plans or photographs) is given in good faith but should not be relied upon as being a statement of representation of fact. Nothing in these Particulars shall be deemed to be a statement that the property is in good condition or otherwise nor that any services or facilities are in good working order. Any measurements of distances referred to herein are approximate only. October 2021