



## **RUSSELL SIMPSON**

An unusually wide house, with  
enormously luxurious rooms,  
particularly the double height  
drawing room

MONTPELIER TERRACE  
KNIGHTSBRIDGE SW7

Montpelier Terrace

£5,000,000

BEDROOMS 2-3	INTERNAL  1,751 SQ FT  162 SQM	OUTDOOR  176 SQ FT	COUNCIL TAX  RBKC, H
BATHROOMS 2		EPC C	TENURE Freehold



## The Property

Hidden behind this handsome low built façade sits this generous and impressive house with a double height drawing room offering 4.72 meter ceiling heights. The living space occupies the ground and lower ground floors, with a large open plan kitchen dining area.

## Indoor Spaces

The two equally sized double bedroom suites occupy the second and third floors, both of which have green outlooks and south facing terraces. Having been efficiently planned each bedroom offers a superb ensuite bathroom alongside ample fitted wardrobes. There is a study/third bedroom on the first floor.


# The Neighbourhood

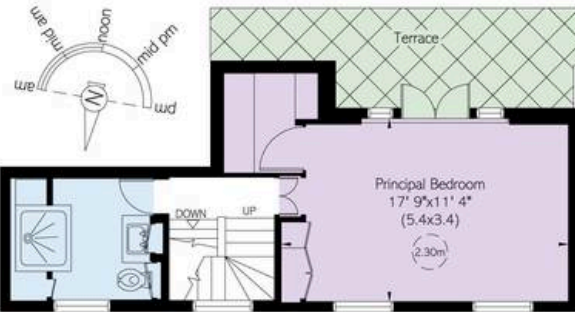
The house stands on the south side of Montpelier Terrace, with open southerly and green views over the neighbouring gardens. Montpelier Terrace is a quiet residential street tucked off Montpelier Square, in an idyllic location being an easy walking distance from Harrods and Hyde Park.

# MONTPELIER TERRACE, SW7

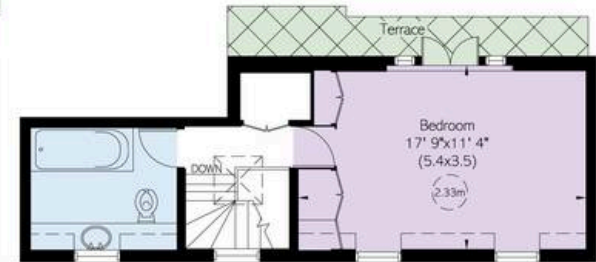
Approximate Area = 1751 sq ft/ 163 sq m

Including Limited Use Area (18 sq ft/ 2 sq m)

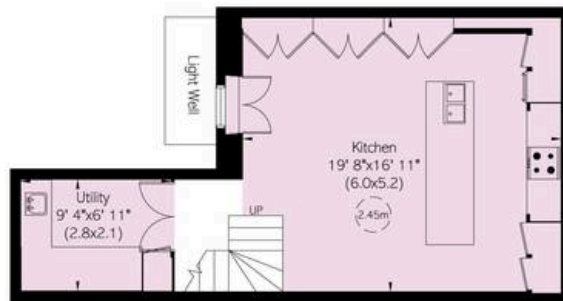
 Reduced head height below 1.5m



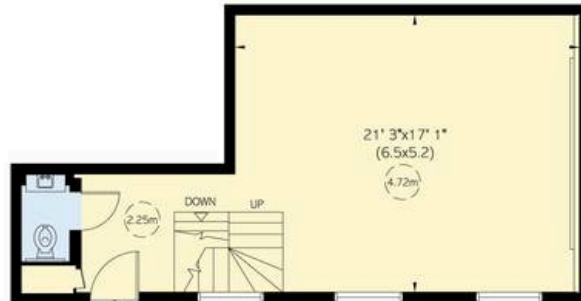
Second Floor



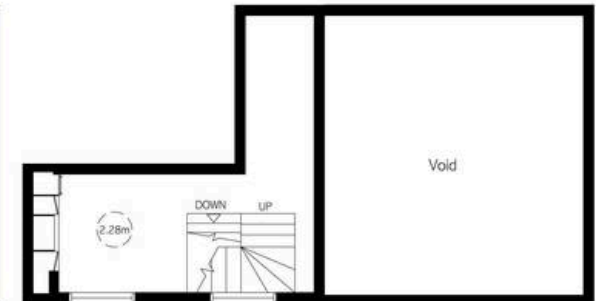
Third Floor



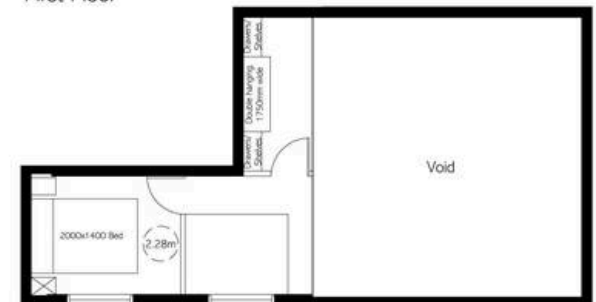
Lower Ground Floor



Ground Floor



First Floor



Proposed First Floor

**RUSSELL  
SIMPSON**

---

## Contact Us

+44 (0) 20 7225 0277

151A Sydney Street  
London  
SW3 6NT

[chelsea@russellsimpson.co.uk](mailto:chelsea@russellsimpson.co.uk)

In accordance with the Property Mis-Description Act 1991, the following details have been prepared in good faith, and are not intended to constitute part of an offer or contract. Any information contained herein (whether in the text, plans or photographs) is given in good faith but should not be relied upon as being a statement of representation of fact. Nothing in these Particulars shall be deemed to be a statement that the property is in good condition or otherwise nor that any services or facilities are in good working order. Any measurements of distances referred to herein are approximate only. October 2021