



RUSSELL SIMPSON

An unusually wide house, with
enormously luxurious rooms,
particularly the double height
drawing room

MONTPELIER TERRACE
KNIGHTSBRIDGE SW7

Montpelier Terrace

£5,000,000

BEDROOMS 2-3	INTERNAL 1,751 SQ FT	OUTDOOR 176 SQ FT	COUNCIL TAX RBKC, H
BATHROOMS 2	162 SQM	EPC C	TENURE Freehold



The Property

Hidden behind this handsome low built façade sits this generous and impressive house with a double height drawing room offering 4.72 meter ceiling heights. The living space occupies the ground and lower ground floors, with a large open plan kitchen dining area.

Indoor Spaces


The two equally sized double bedroom suites occupy the second and third floors, both of which have green outlooks and south facing terraces. Having been efficiently planned each bedroom offers a superb ensuite bathroom alongside ample fitted wardrobes. There is a study/third bedroom on the first floor.

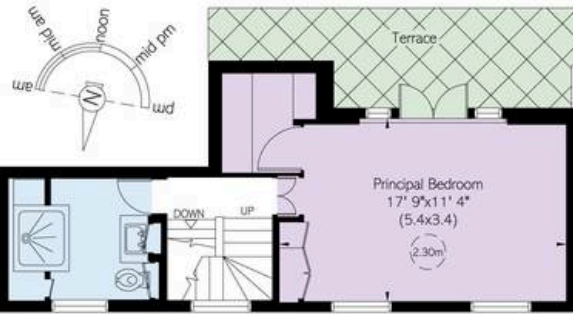
The Neighbourhood

The house stands on the south side of Montpelier Terrace, with open southerly and green views over the neighbouring gardens. Montpelier Terrace is a quiet residential street tucked off Montpelier Square, in an idyllic location being an easy walking distance from Harrods and Hyde Park.

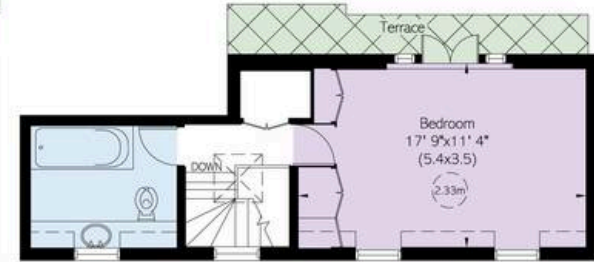
MONTPELIER TERRACE, SW7

Approximate Area = 1751 sq ft/ 163 sq m
Including Limited Use Area (18 sq ft/ 2 sq m)

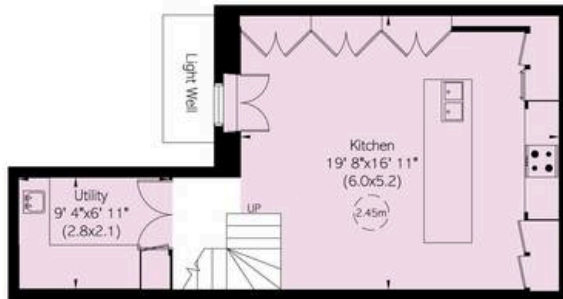
 Reduced head height below 1.5m



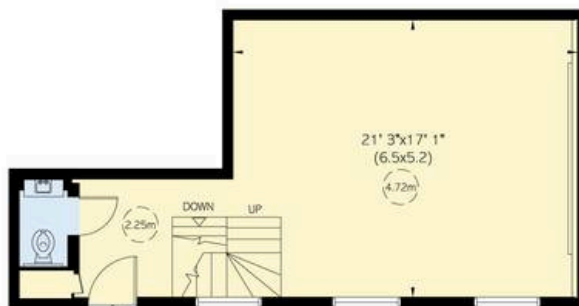
Second Floor



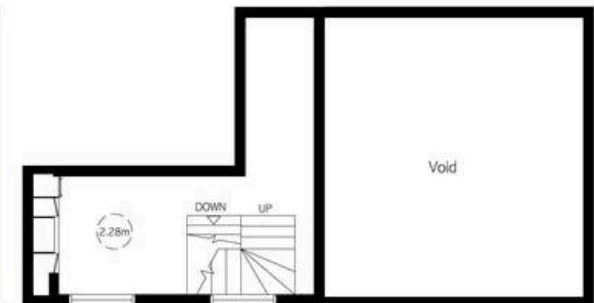
Third Floor



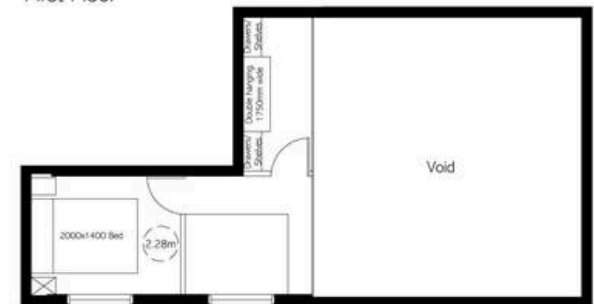
Lower Ground Floor



Ground Floor



First Floor



Proposed First Floor

**RUSSELL
SIMPSON**

Contact Us

+44 (0) 20 7225 0277

Contact us

info@russellsimpson.co.uk

Sydney Street

+44 (0) 20 7225 0277

151A Sydney Street

London

SW3 6NT

chelsea@russellsimpson.co.uk

Kensington Square

+44 (0) 20 3761 9691

13 Kensington Square

London

W8 5HD

kensington@russellsimpson.co.uk