

## **RUSSELL SIMPSON**

Impressive Grade II listed  
townhouse with access to a  
communal garden square in prime  
Knightsbridge

MONTPELIER SQUARE  
KNIGHTSBRIDGE SW7

Montpelier Square

£9,250,000

BEDROOMS 5	INTERNAL  4,458 SQ FT  414 SQM	OUTDOOR  —	COUNCIL TAX  RBKC, H
BATHROOMS 3		EPC D	TENURE Freehold



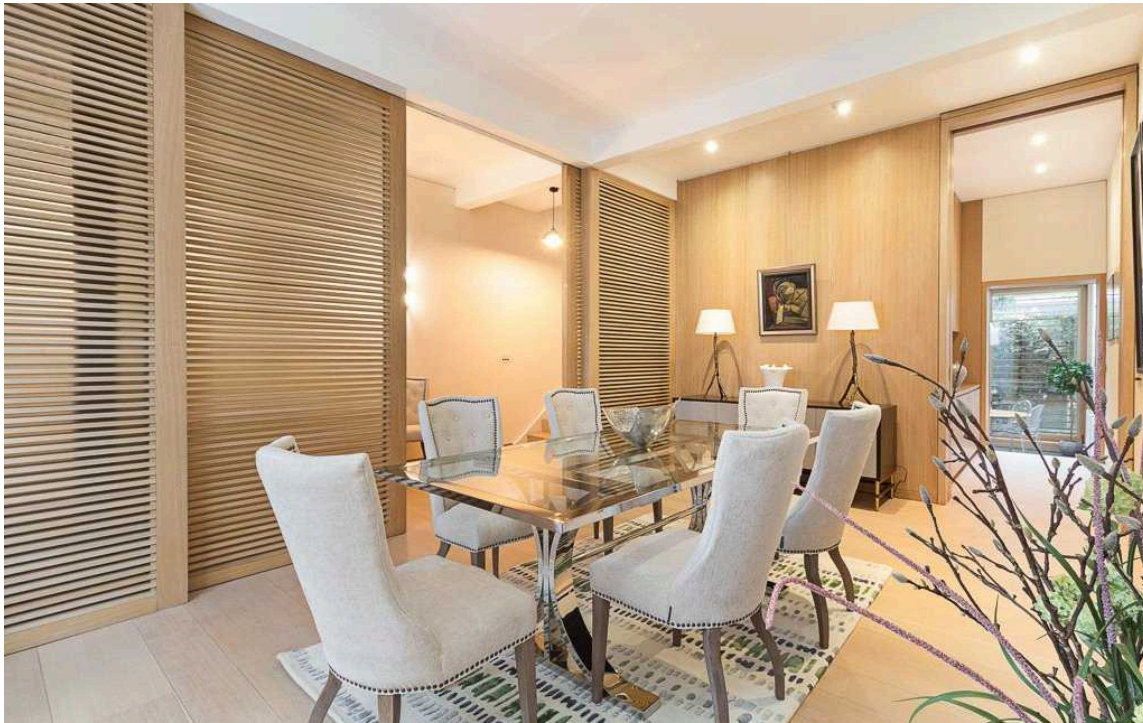
## The Property

Five bedroom family home with stylish interiors within walking distance of Hyde Park.

Entering the house on the raised ground floor, sliding doors open from the front hall to a dining room with high ceilings and a wide sash window. A convenient corridor leads through to the fitted kitchen and French doors open out onto the terrace. Furthermore, an overhead skylight ensures the informal eating area is filled with light throughout the day.

PLEASE NOTE PHOTOGRAPHS AS PREVIOUSLY FURNISHED





## Indoor Spaces

The first floor is occupied by a grand drawing room with full-length windows opening onto the front balcony. This floor also contains a study on the half-landing.

Downstairs is a generous family room that can be used as a home cinema. This floor also contains an ensuite bedroom, an additional bathroom, a utility room and considerable storage space. Another door gives access to the street and further storage vaults.

img 1

Dining Room

img 2

Kitchen







## The Bedrooms

The house is decorated in sophisticated style, resulting in colourful and contemporary interiors.

The second floor features a well-proportioned principal bedroom with an ensuite bathroom and walk-in wardrobe. The third floor offers two more bedrooms and a shared bathroom, while the fourth floor has a final bedroom with an ensuite bathroom.

img 1

Principal Bedroom

img 2

Bathroom







## The Neighbourhood

The property includes a rear terrace and a front balcony. In addition, residents have access to the communal garden square.

Montpelier Square is a beautiful and sought-after garden square in Knightsbridge. Its tall brick houses with stucco dressings were built in the nineteenth century and have been occupied by several celebrated actresses, artists and writers over the years. The exclusive restaurants and shops of Knightsbridge are a short walk away, and so too the underground station. In addition, the open spaces of Hyde Park and Kensington Gardens are within easy reach. Finally, the world-class cultural venues of South Kensington are nearby.



**RUSSELL  
SIMPSON**

---

## Contact Us

+44 (0) 20 7225 0277

151A Sydney Street  
London  
SW3 6NT

[chelsea@russellsimpson.co.uk](mailto:chelsea@russellsimpson.co.uk)

In accordance with the Property Mis-Description Act 1991, the following details have been prepared in good faith, and are not intended to constitute part of an offer or contract. Any information contained herein (whether in the text, plans or photographs) is given in good faith but should not be relied upon as being a statement of representation of fact. Nothing in these Particulars shall be deemed to be a statement that the property is in good condition or otherwise nor that any services or facilities are in good working order. Any measurements of distances referred to herein are approximate only. October 2021