

## **RUSSELL SIMPSON**

Three-bedroom flat with bright and  
stylish interiors close to South  
Kensington station

MALVERN COURT  
SOUTH KENSINGTON SW7

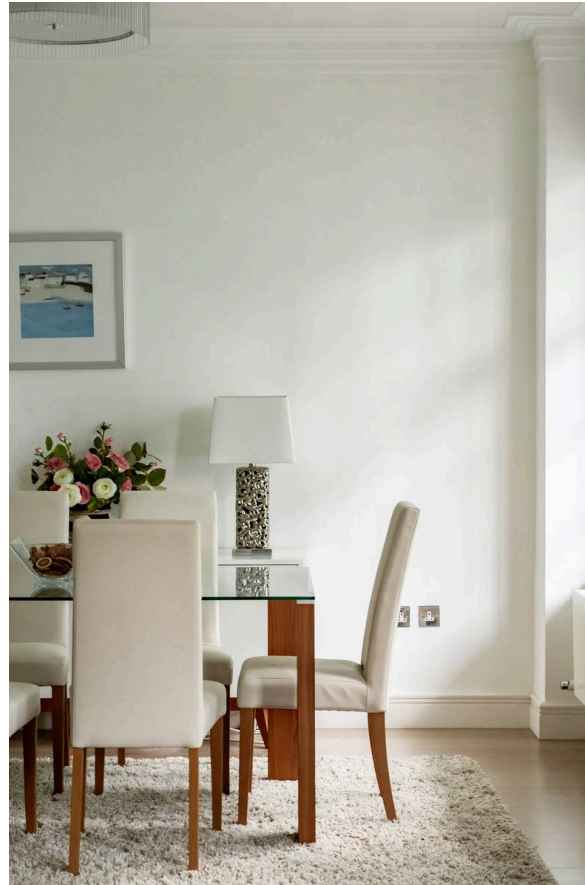
# Malvern Court

£2,000,000

BEDROOMS 3	INTERNAL 1,195 SQ FT	OUTDOOR —	COUNCIL RBKC
BATHROOMS 2	111 SQM	EPC C	COUNCIL TAX G
TENURE Leasehold	LEASE LENGTH 92 YEARS	GROUND RENT —	SERVICE CHARGE £9,600 P/Y

# The Property

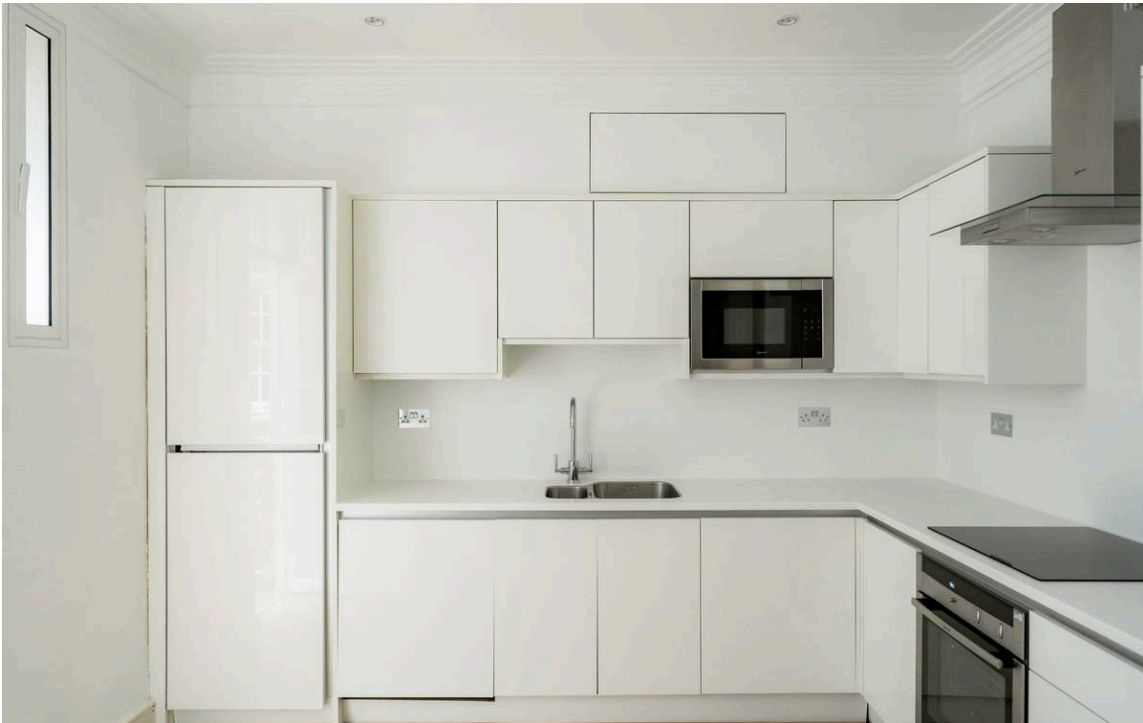
Three-bedroom flat with bright and stylish interiors close to South Kensington station



## The Property

Well-proportioned flat with light-filled reception room in a popular Art Deco apartment building. Entering the flat on the second floor, a central corridor connects the main rooms. At one end lies a generous reception room flooded with light from wide, west-facing windows. This room includes separate dining and seating areas, while wooden floors add to the sense of style





## Indoor Spaces

There is a well-proportioned kitchen with fitted units round the walls and room for an informal eating area.



## The Bedrooms

This side of the flat also features a principal bedroom with an ensuite bathroom and a second double bedroom, this one with considerable storage space. The third bedroom is found on the far side of the flat, with an adjacent bathroom. The flat is decorated in a cool, contemporary fashion, which adds to the sense of light and space.





## The Neighbourhood

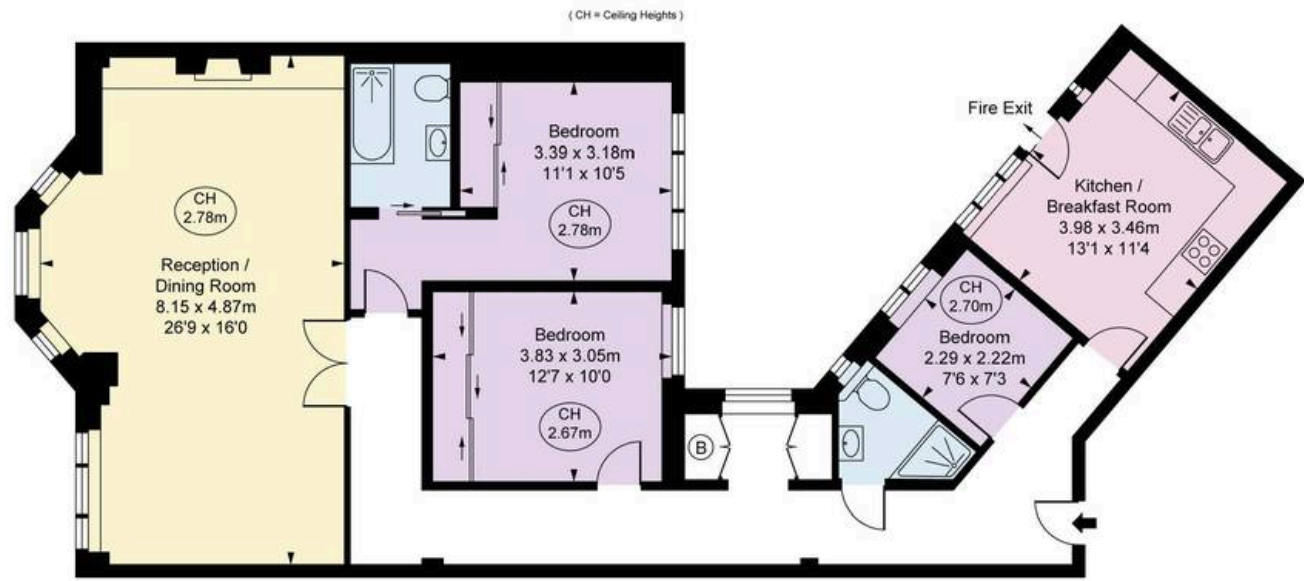
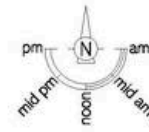
Malvern Court is a sought-after Art Deco apartment building on the corner of Onslow Square with both porter and lift. The property is ideally located. From here, South Kensington underground station is a short walk away, while the world-class cultural facilities of the Museum District are also nearby. In addition, the many restaurants and shops of the King's Road and the Fulham Road are within easy reach.

Malvern Court,  
SW7

**Approx Gross Internal Area**  
1,195 sq ft / 111.01 sq m

**RUSSELL  
SIMPSON**

This plan is for layout guidance only. Not drawn to scale unless stated. Windows and door openings are approximate. Whilst every care is taken in the preparation of this plan, please check all dimensions, shapes, and compass bearings before making any decisions reliant upon them.



SECOND FLOOR



**RUSSELL  
SIMPSON**

---

## Contact Us

+44 (0) 20 7225 0277

151A Sydney Street  
London  
SW3 6NT

[chelsea@russellsimpson.co.uk](mailto:chelsea@russellsimpson.co.uk)