



RUSSELL SIMPSON

Unique and historic Chelsea house
with garage and spectacular top-
floor studio

MALLORD STREET
CHELSEA SW3

Mallord Street

£6,950,000

BEDROOMS 3	INTERNAL 2,910 SQ FT	OUTDOOR 309 SQ FT	COUNCIL TAX RBKC, H
BATHROOMS 3	270 SQM	EPC C	TENURE Freehold

The Property

Beautifully designed three-bedroom house with a rich artistic history close to the King's Road

Entering the house on the ground floor, you step into a spacious staircase hall. On one side is a recently fitted kitchen with a central island breakfast bar and an informal dining area. On the other side is a comfortable reception room with inbuilt shelving. Beyond lies a bedroom with an ensuite bathroom and storage space.



Sitting Room

img 2



Indoor Spaces

The third floor is almost entirely occupied by a magnificent studio space. This includes double-height ceilings, an impressive fireplace and exceptionally large windows. There is also a panelled library area with inbuilt shelving and a bar, and a well-lit study at the western end of this level.

img 1

Kitchen



Entertaining Spaces





The Bedrooms

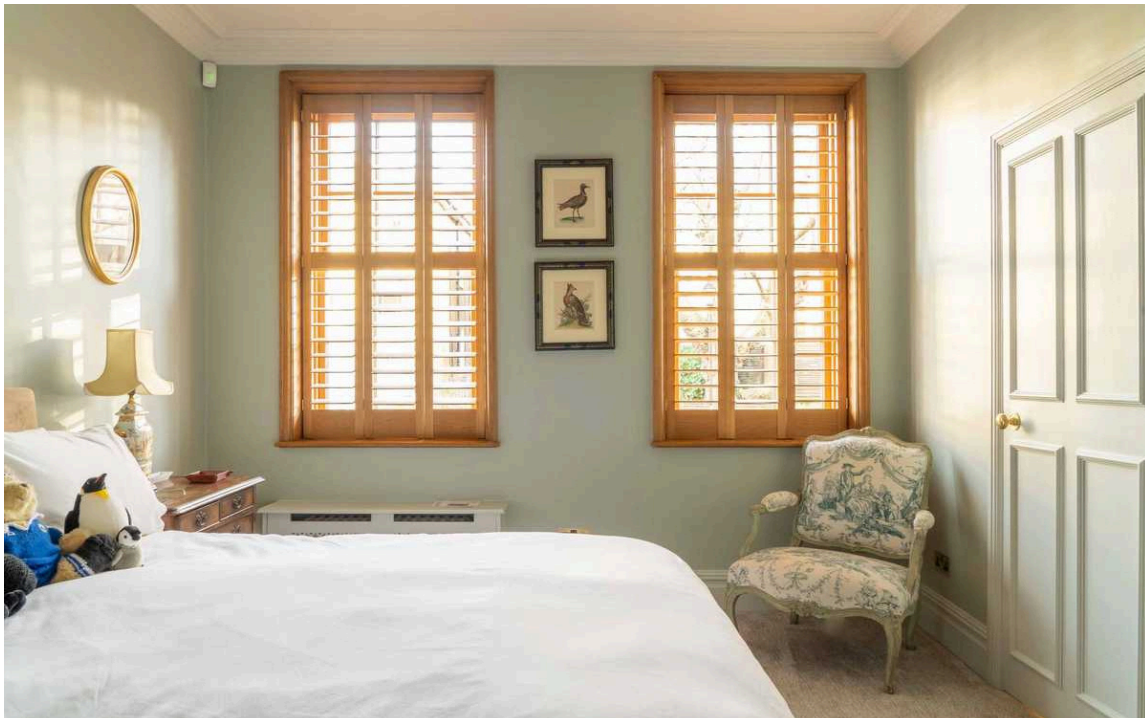
The first floor features a generous principal bedroom. It includes a dressing room, an ensuite bathroom with a bath, and a French door with views down the length of Mallord Street. The western orientation means the room is filled with light from the afternoon sun. This floor also contains a second bedroom with ensuite bathroom and a cloakroom.

img 1

Principal Bedroom

img 2

Bedroom



The Design

The house has been tastefully decorated to a high standard, blending classical and contemporary details while taking full advantage of the exceptional proportions. Some of the rooms have air conditioning, and the entire property is presented in excellent condition.



Outdoor Spaces

The property includes a garage with off-street parking. In addition, the flat roof on the first floor has wooden decking.

The house was built in 1911 for the watercolourist Cecil Arthur Hunt. Its architect was Ralph Knott, who was best known for designing the London County Hall building. This is a perfect example of the 'studio house', with a large space for painting on the top floor to take full advantage of the light.

The Neighbourhood

The house was home to the world-renowned Hungarian pianist Louis Kentner. More recently, the studio space has been used to host recitals, recalling this rich cultural history.

Mallord Street is one of Chelsea's most charming addresses. It was named after J.M.W. Turner – Mallord was the painter's middle name – and lined with Edwardian houses built in the Arts and Crafts style. Over the years, this street has been home to numerous creative figures, including painters, composers and writers. The most well-known of these was the author A.A. Milne, who created the Winnie the Pooh books. Mallord Street is moments away from the King's Road, with its celebrated range of restaurants and shops. In addition, Sloane Square and South Kensington underground stations are both within walking distance



img 1

Terrace

img 2

Exterior

Mallord Street, SW3

**RUSSELL
SIMPSON**

Approximate Internal Area

5,910 sq ft / 547 sq m

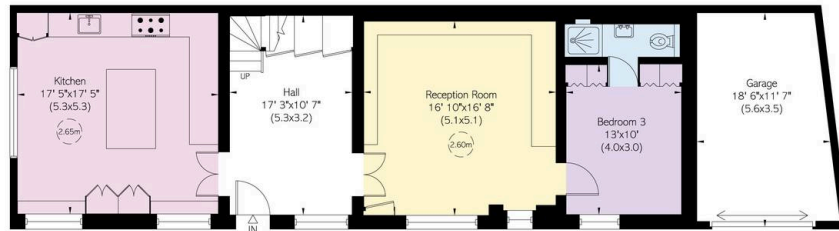
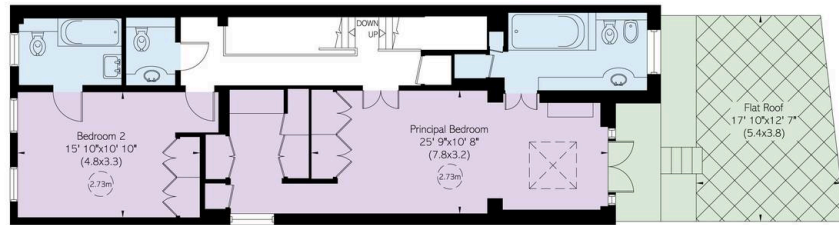
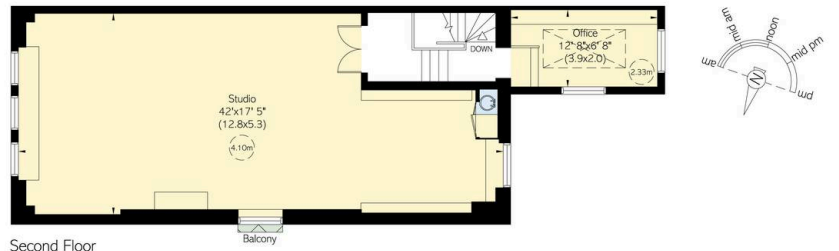
Including garage

308 sq ft / 28 sq m

Outside Area

309 sq ft / 29 sq m

This plan is for layout guidance only. Not drawn to scale unless stated. Windows and door openings are approximate. Whilst every care is taken in the preparation of this plan, please check all dimensions, shapes, and complete loadings before making any decisions reliant upon them.



**RUSSELL
SIMPSON**

Contact Us

+44 (0) 20 7225 0277

151A Sydney Street
London
SW3 6NT

chelsea@russellsimpson.co.uk