



## **RUSSELL SIMPSON**

Two bedroom flat in a beautiful red brick mansion block, in the heart of Old Chelsea

LAWRENCE MANSIONS  
CHELSEA SW3

# Lawrence Mansions

# Sold

BEDROOMS 2	INTERNAL 763 SQ FT	OUTDOOR —	COUNCIL —
BATHROOMS 1	70 SQM	EPC D	COUNCIL TAX F
TENURE Share of freehold	LEASE LENGTH 979 YEARS	GROUND RENT —	SERVICE CHARGE £3,400 P/Y



## The Property

Top floor flat, close to Albert Bridge and the Thames.



## Indoor Spaces

Entering the flat on the third floor, a central corridor connects the main rooms of the property. The largest of these is a reception room, with enough space for separate dining and seating areas. In addition, this room offers inbuilt shelving and a dramatic fireplace surround, while south-facing sash windows ensure the room receives light for much of the day.

The reception room connects with the kitchen. In addition, the property contains two bedrooms and a bathroom with a bath. The principal bedroom is also south-facing, with views towards the Thames.

Please Note: The interior photographs featured in this listing include CGI furniture





## The Neighbourhood

Lordship Place is a quiet road connecting Lawrence Street with the historic Cheyne Row. The neighbourhood contains several red-brick mansion blocks, as well as the beautiful Georgian houses of Old Chelsea. To the south, the Thames embankment and the Albert Bridge are both a few minutes away, leading to the open spaces of Battersea Park. To the north, the restaurants and shops of the King's Road are in easy reach. Finally, Sloane Square and Imperial Wharf underground stations are both a short bus ride away.


# Lawrence Mansions, SW3

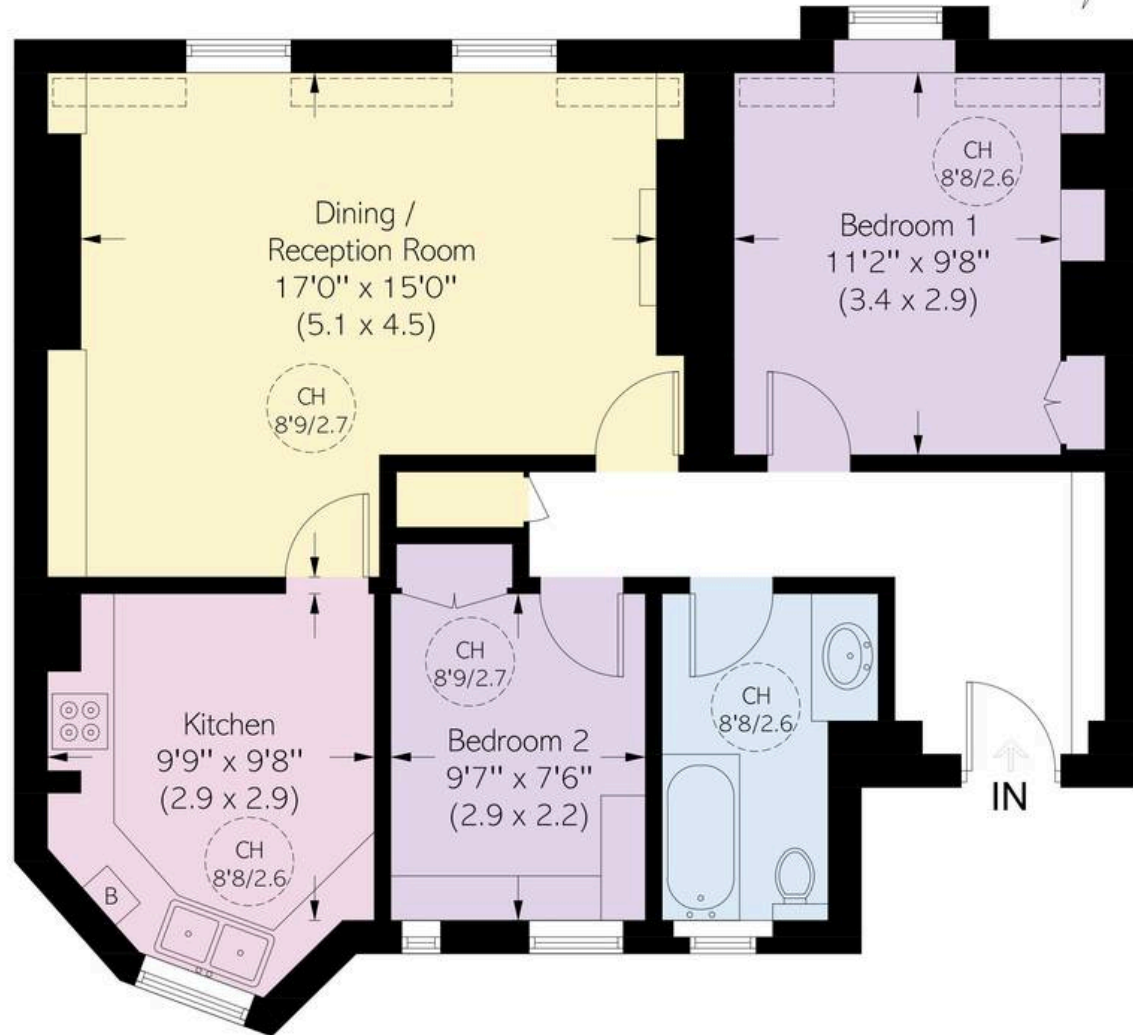
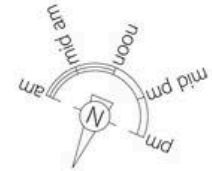
**Approximate area**  
70.9 sq m / 763 sq ft

**Including limited use area**  
(2.6 sq m / 28 sq ft)

## RUSSELL SIMPSON

This plan is for layout guidance only. Not drawn to scale unless stated. Windows and door openings are approximate. Whilst every care is taken in the preparation of this plan, please check all dimensions, shapes, and compass bearings before making any decisions reliant upon them.

 = Reduced head height below 1.5m



Third Floor

**RUSSELL  
SIMPSON**

---

## Contact Us

+44 (0) 20 7225 0277

Contact us

[info@russellsimpson.co.uk](mailto:info@russellsimpson.co.uk)

---

## Sydney Street

+44 (0) 20 7225 0277

151A Sydney Street

London

SW3 6NT

[chelsea@russellsimpson.co.uk](mailto:chelsea@russellsimpson.co.uk)

---

## Kensington Square

+44 (0) 20 3761 9691

13 Kensington Square

London

W8 5HD

[kensington@russellsimpson.co.uk](mailto:kensington@russellsimpson.co.uk)