



RUSSELL SIMPSON

An elegant and spacious 3 bedroom
maisonette tucked away in one of
the most charming residential areas
in Kensington

LAUNCESTON PLACE
KENSINGTON W8

Launceston Place

Sold

BEDROOMS 3	INTERNAL 1,422 SQ FT	OUTDOOR —	COUNCIL —
BATHROOMS 2	132 SQM	EPC D	COUNCIL TAX G
TENURE Leasehold	LEASE LENGTH 147 YEARS	GROUND RENT —	SERVICE CHARGE —



The Property

The flat benefits from its own entrance, high ceilings and wooden floors throughout.

Comprised of a generous reception room leading to a modern, fully fitted eat-in kitchen on the first floor. There is a stylish and spacious principle bedroom with a fabulous en-suite shower room and 2 further double bedrooms and a family bathroom with guest WC. The flat has ample storage throughout and is exceptionally bright.





The Bedrooms



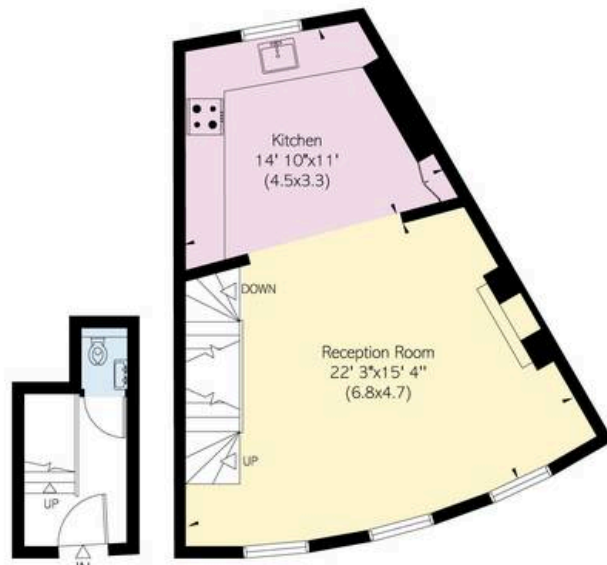
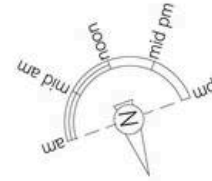
The Neighbourhood

Launceston Place is within walking distance of Hyde Park, High Street Kensington as well as Gloucester Road tube station. You are perfectly located whilst enjoying the peace and tranquility of this pretty enclave.

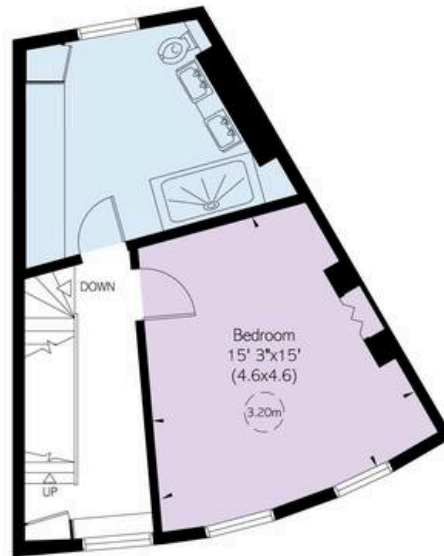


UPPER MAISONETTE, LAUNCESTON PLACE, W8

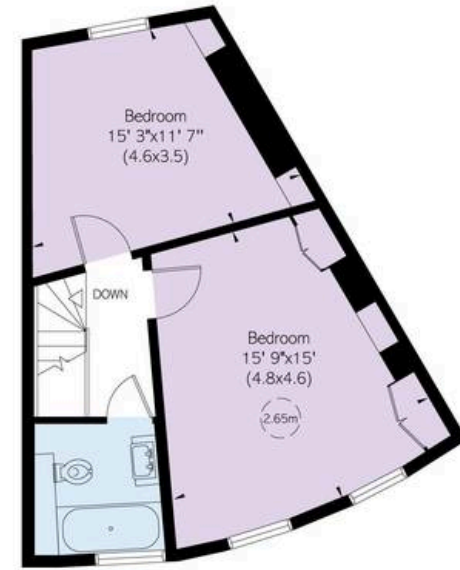
Approximate Internal Area = 1422 sq ft/ 132 sq m



Ground Floor First Floor



Second Floor



Third Floor

<p>VIEWING ARRANGEMENTS</p> <p>Telephone: +44 (0)20 3761 9691 Email: info@russellsimpson.co.uk</p> <p><small>This plan is for general guidance only. Not intended to constitute an offer. Dimensions and floor levels are approximate. Please refer to the particulars of this plan, plans, details of construction, design and exterior fittings before making any decision to purchase.</small></p>	<p>RUSSELL SIMPSON</p>
--	-----------------------------------

**RUSSELL
SIMPSON**

Contact Us

+44 (0) 20 7225 0277

Contact us

info@russellsimpson.co.uk

Sydney Street

+44 (0) 20 7225 0277

151A Sydney Street

London

SW3 6NT

chelsea@russellsimpson.co.uk

Kensington Square

+44 (0) 20 3761 9691

13 Kensington Square

London

W8 5HD

kensington@russellsimpson.co.uk