

## **RUSSELL SIMPSON**

Sublime five-bedroom family home  
in Chelsea with light-filled rooms in  
immaculate condition

LANGTON STREET  
CHELSEA SW10

Langton Street

Sold

BEDROOMS 5	INTERNAL 2,591 SQ FT	OUTDOOR 516 SQ FT	COUNCIL TAX H
BATHROOMS 3	240 SQM	EPC D	TENURE Freehold

# The Property

Beautifully designed house with west-facing garden and contemporary interiors close to the King's Road

Stepping into the house on the raised ground floor, the foyer leads through to a generous reception room. As well as a seating area surrounding a fireplace, this room includes an internal balcony overlooking the lower ground floor, letting light pour down from above. Furthermore, the far end of this floor has access to a rear terrace and a guest cloakroom completes this level.



---

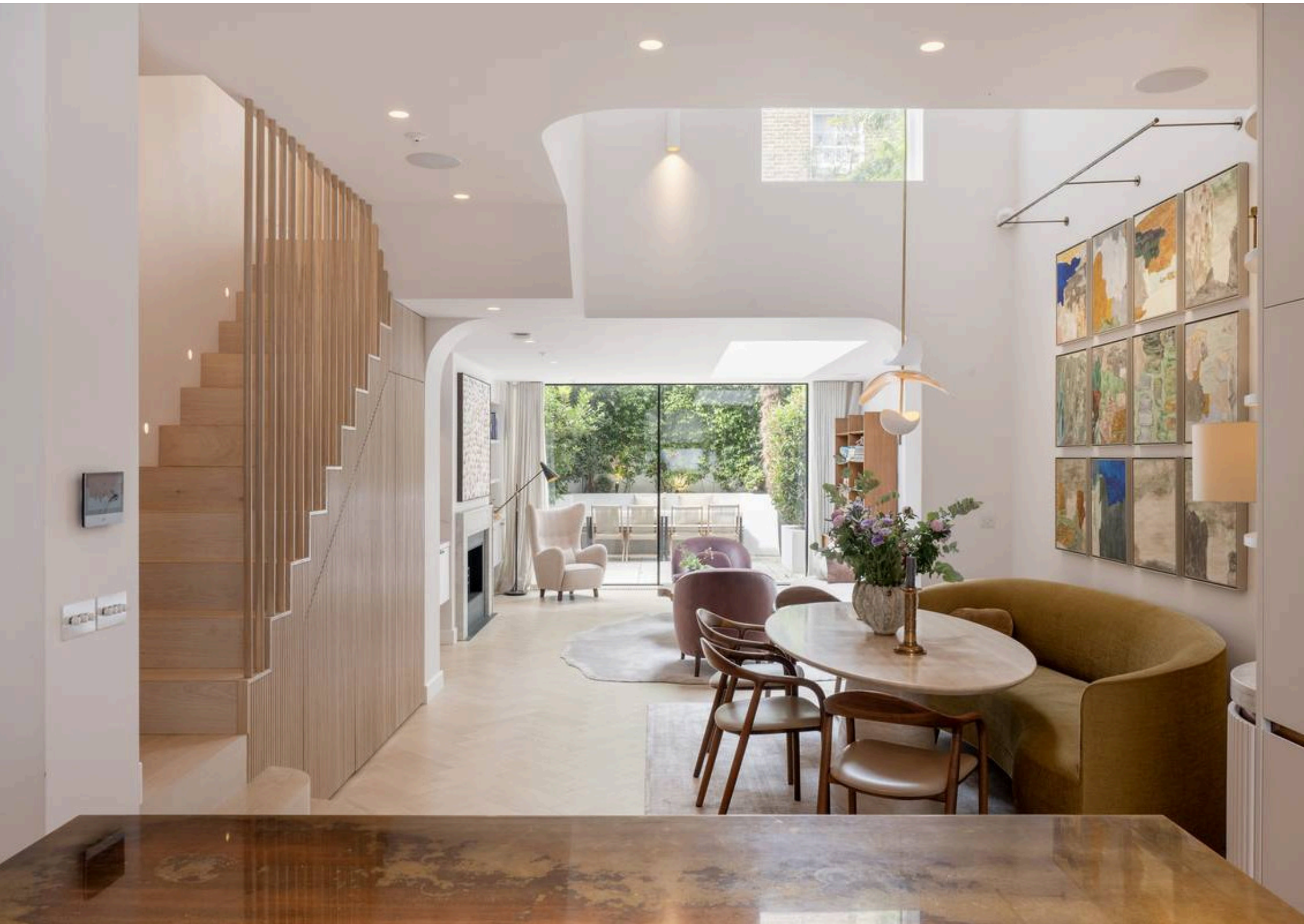
img 1

Dining Area

img 2

Family Room







## Indoor Spaces

The lower ground floor is almost entirely occupied by a generous reception room. This includes an open-plan kitchen with a central island and a formal dining area. In addition, an informal seating area opens onto the garden, with sliding floor-to-ceiling French doors that fill this space with daylight. This floor also has separate street access at the front.

---

img 1

Entrance

img 2

Kitchen

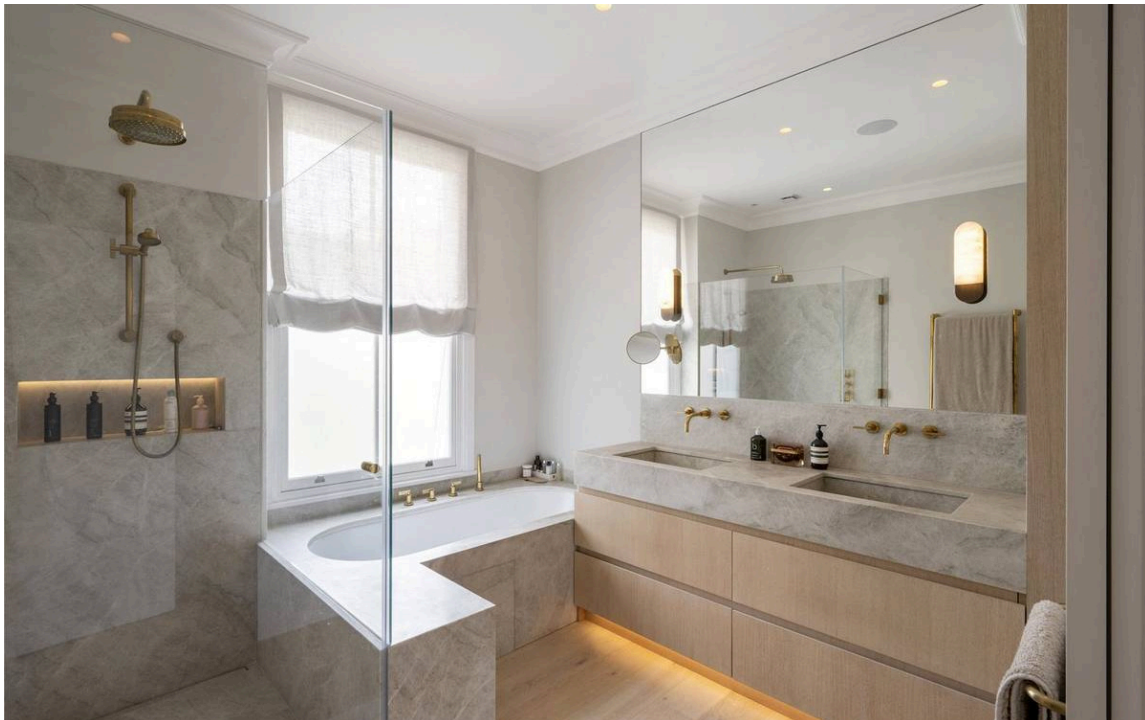






## Principal Bedroom

The first floor features a generous principal bedroom with a pair of double French doors opening onto a front balcony. Next door is a bathroom with a shower and bath, while the half-landing offers a study or television room overlooking the garden.





## Further Bedrooms

The second floor includes two more bedrooms sharing a bathroom, with two additional bedrooms on the half-landings, one of them ensuite. All the bedrooms have inbuilt storage space with LED lighting. Three of the bedrooms have air conditioning, while many of the rooms offer inbuilt speakers.





## The Design

The house has been thoughtfully designed with a sophisticated layout that maximises the sense of space and light. Its calm contemporary interiors are presented in immaculate condition.







## Outdoor Spaces

The property includes a paved west-facing garden with enough space for outdoor dining and built-in heaters. In addition, there is a front balcony, a rear terrace, and stairs giving access to the flat roof.

---

img 1

Garden

img 2

Roof Terrace

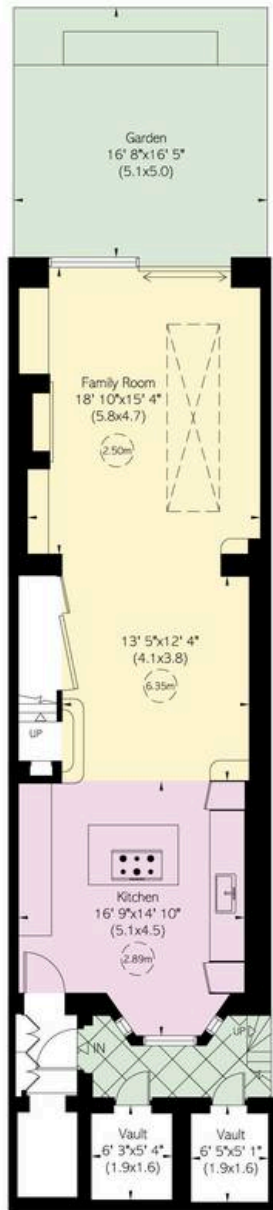




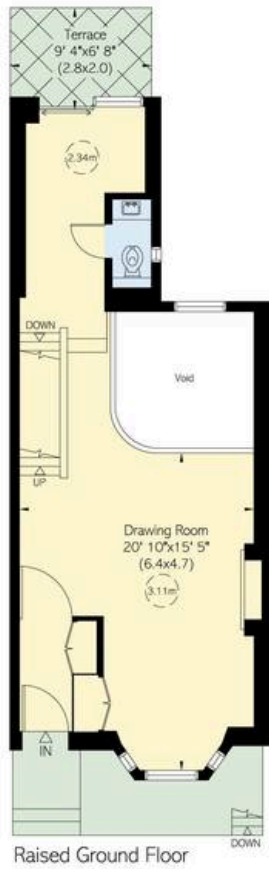


## The Neighbourhood

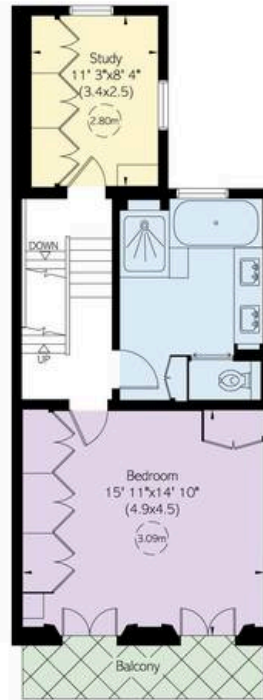
Langton Street is a quiet residential road with a handful of charming furniture shops and restaurants. From here, the King's Road is close, while the Fulham Road is also nearby. In addition, Fulham Broadway underground station is a short walk away.



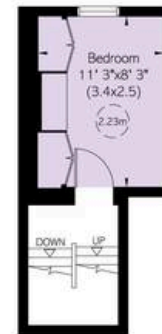
Lower Ground Floor



Raised Ground Floor



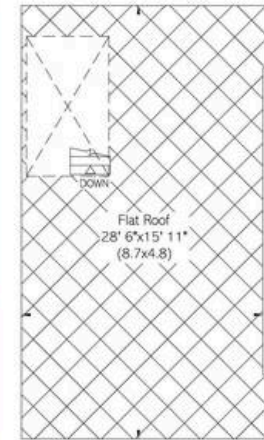
First Floor



Half Landing



Second Floor



## Langton Street, SW10

**RUSSELL  
SIMPSON**

**Approximate Internal Area**

2,591 sq ft/ 241 sq m

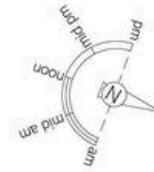
**Including vaults**

63 sq ft/ 6 sq m

**Outside Area**

516 sq ft/ 48 sq m

This plan is for layout guidance only. Not drawn to scale unless stated. Windows and door openings are approximate. Whilst every care is taken in the preparation of this plan, please check all dimensions, shapes, and compass bearings before making any decisions reliant upon them.





**RUSSELL  
SIMPSON**

---

## Contact Us

+44 (0) 20 7225 0277

151A Sydney Street  
London  
SW3 6NT

[chelsea@russellsimpson.co.uk](mailto:chelsea@russellsimpson.co.uk)