



## **RUSSELL SIMPSON**

A magnificent and historic six-  
bedroom family home

KENSINGTON GATE  
KENSINGTON W8

Kensington Gate

£10,750,000

BEDROOMS 6	INTERNAL 4,151 SQ FT	OUTDOOR 936 SQ FT	COUNCIL TAX RBKC, H
BATHROOMS 5	385 SQM	EPC D	TENURE Freehold



## The Property

A substantial stucco-fronted Grade II\* listed house on a sought-after garden square moments away from Hyde Park.

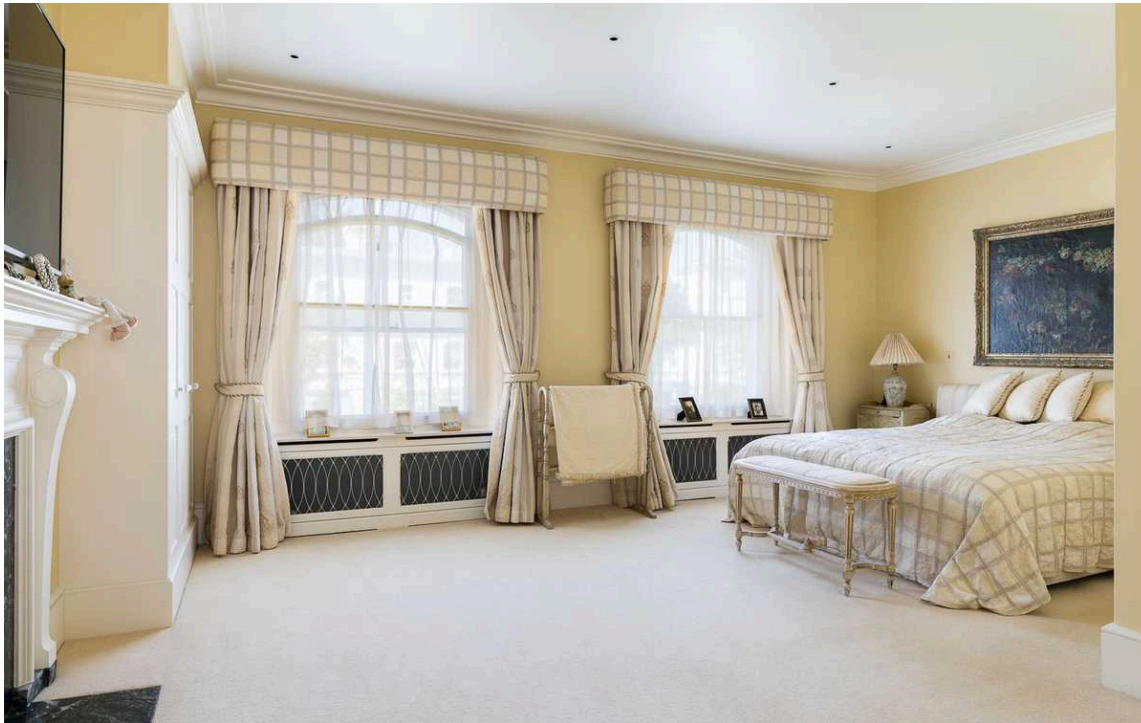
Kensington Gate is Grade II\* listed and decorated in a traditional style to accentuate its historic character. For the lower storeys, this includes high ceilings, ornate cornices and panelled doors, as well as tasteful fireplaces and built-in storage. However, it has also been updated for modern living, with air conditioning throughout the main house.



## Indoor Spaces

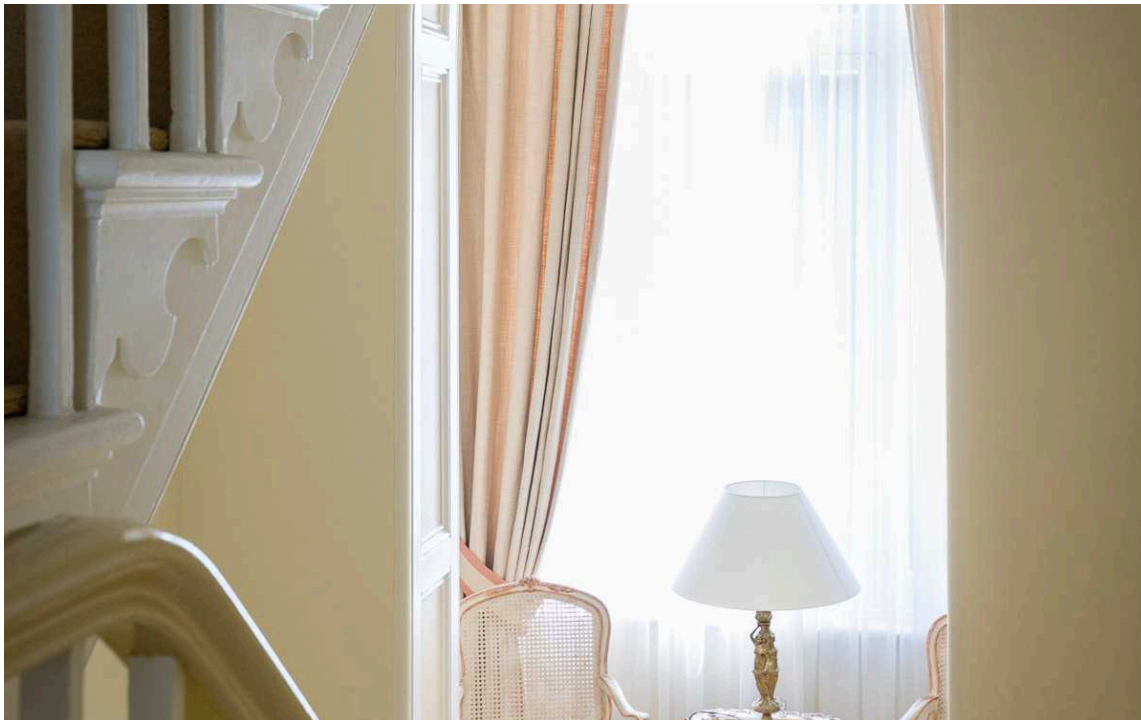
Stepping into the house on the ground floor, the entrance hall opens onto a formal dining room. Double doors connect this room to the open-plan kitchen, which includes an informal eating area in a glass-sided extension. This space not only offers views over the garden, but its south-facing aspect ensures the kitchen is filled with light throughout the day. Upstairs, a grand reception room occupies the entire first floor, with French windows opening onto the front balcony.





## The Bedrooms

A generous principal bedroom occupies the second floor, with a spacious ensuite bathroom and considerable storage space, including a walk-in wardrobe on the landing. Upstairs again, on the third floor, are three bedrooms and two bathrooms, one of them ensuite. Downstairs, the lower ground floor features two more bedrooms and a guest WC. One of these bedrooms has access to the garden via the glass extension, while the other has separate street access. Below that, in the basement floor, is a gym with ensuite bathroom and a spacious media room.



## Outdoor Spaces

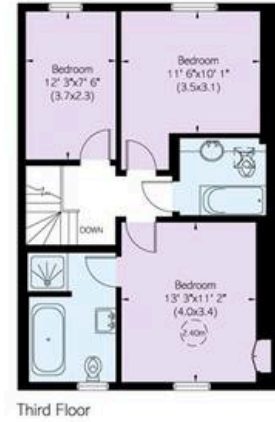
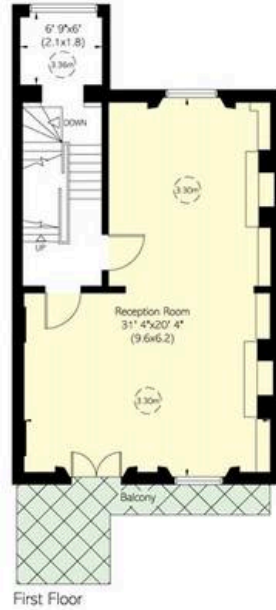
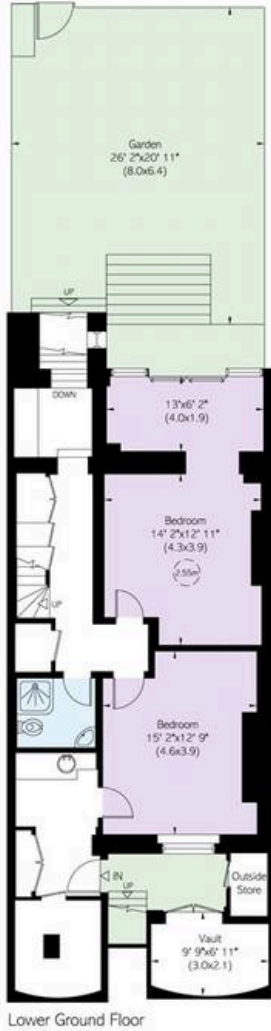
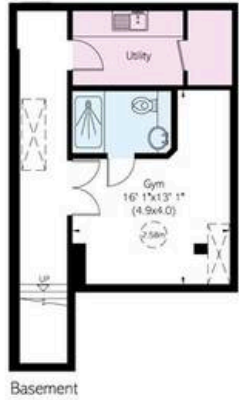
The house features a paved, south-facing garden with space enough for outdoor dining. In addition, the first-floor balcony stretches across the entire width of the house, with views onto the garden square. The garden square is also open to residents, while its mature trees add to the sense of privacy and calm.





## The Neighbourhood

The house was once the site of the Kensington Workhouse, which inspired Charles Dickens's celebrated novel *Oliver Twist*. In the mid-nineteenth century, that building was replaced by the white stucco Italianate houses which now line the square, popular with aristocrats and politicians in the late Victorian Era. Kensington Gate remains a desirable address, both central and secluded. It is well placed for many of the neighbourhood's excellent schools, and within walking distance of Hyde Park and Kensington Gardens. In addition, the world-famous museums and cultural institutions of South Kensington are within easy reach.



# Kensington Gate, W8

**RUSSELL SIMPSON**

**Approximate Internal Area**  
 4,151 sq ft / 386 sq m  
**Including storage and vault**  
 76 sq ft / 7 sq m  
**Outside Area**  
 936 sq ft / 87 sq m

This plan is for layout guidance only. Not drawn to scale unless stated. Windows and door openings are approximate. While every care is taken in the preparation of this plan, please check all dimensions, shapes, and compass bearings before making any decisions reliant upon them.





**RUSSELL  
SIMPSON**

---

## Contact Us

+44 (0) 20 7225 0277

Contact us

[info@russellsimpson.co.uk](mailto:info@russellsimpson.co.uk)

---

## Sydney Street

+44 (0) 20 7225 0277

151A Sydney Street  
London  
SW3 6NT

[chelsea@russellsimpson.co.uk](mailto:chelsea@russellsimpson.co.uk)

---

## Kensington Square

+44 (0) 20 3761 9691

13 Kensington Square  
London  
W8 5HD

[kensington@russellsimpson.co.uk](mailto:kensington@russellsimpson.co.uk)