



RUSSELL SIMPSON

A magnificent and historic six-
bedroom family home with adjoining
mews house

KENSINGTON GATE
KENSINGTON W8

Kensington Gate

£15,250,000

| | | | |
|-----------------|-------------------------|----------------------|------------------------|
| BEDROOMS 8-8 | INTERNAL 5,986 SQ FT | OUTDOOR 936 SQ FT | COUNCIL TAX RBKC, H |
| BATHROOMS 7 | 556 SQM | EPC D | TENURE Freehold |



The Property

A substantial stucco-fronted Grade II* listed house on a sought-after garden square moments away from Hyde Park.

12 Kensington Gate is Grade II* listed and decorated in a traditional style to accentuate its historic character. For the lower storeys, this includes high ceilings, ornate cornices and panelled doors, as well as tasteful fireplaces and built-in storage. However, it has also been updated for modern living, with air conditioning throughout the main house.



Indoor Spaces

Upstairs, a grand reception room occupies the entire first floor, with French windows opening onto the front balcony.

Stepping into the house on the ground floor, the entrance hall opens onto a formal dining room. Double doors connect this room to the open-plan kitchen, which includes an informal eating area in a glass-sided extension. This space not only offers views over the garden, but its south-facing aspect ensures the kitchen is filled with light throughout the day.

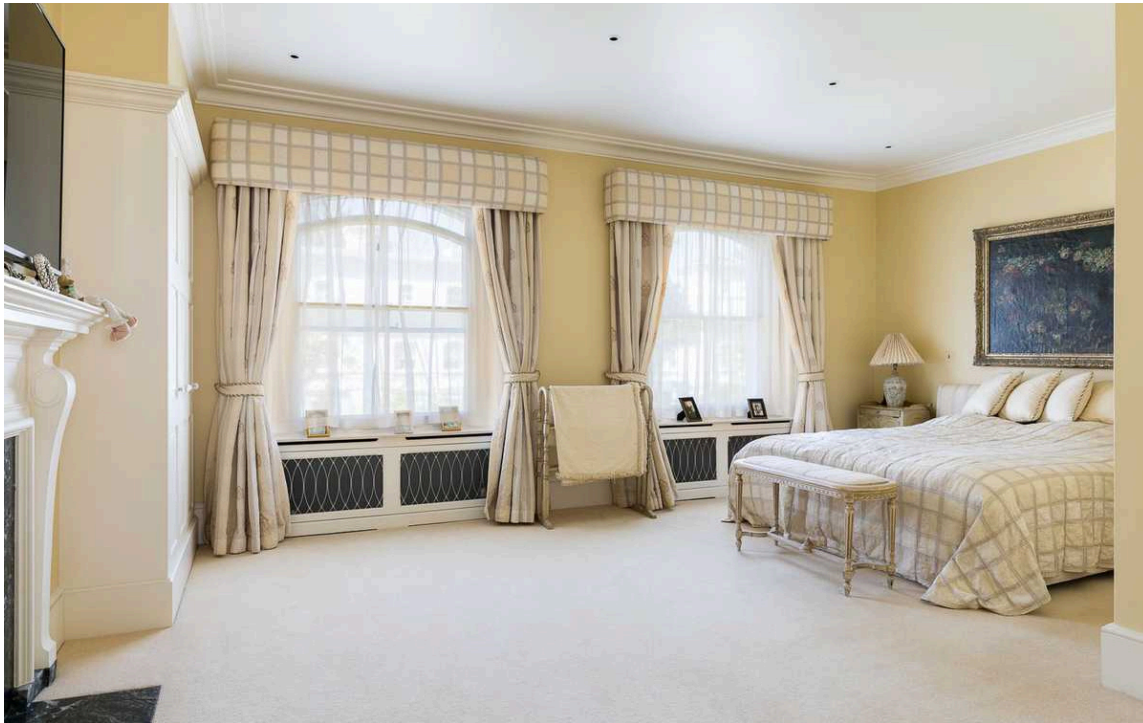
img 1

Reception Room

img 2

Kitchen





The Bedrooms

A generous principal bedroom occupies the second floor, with a spacious ensuite bathroom and considerable storage space, including a walk-in wardrobe on the landing. Upstairs again, on the third floor, are three bedrooms and two bathrooms, one of them ensuite.

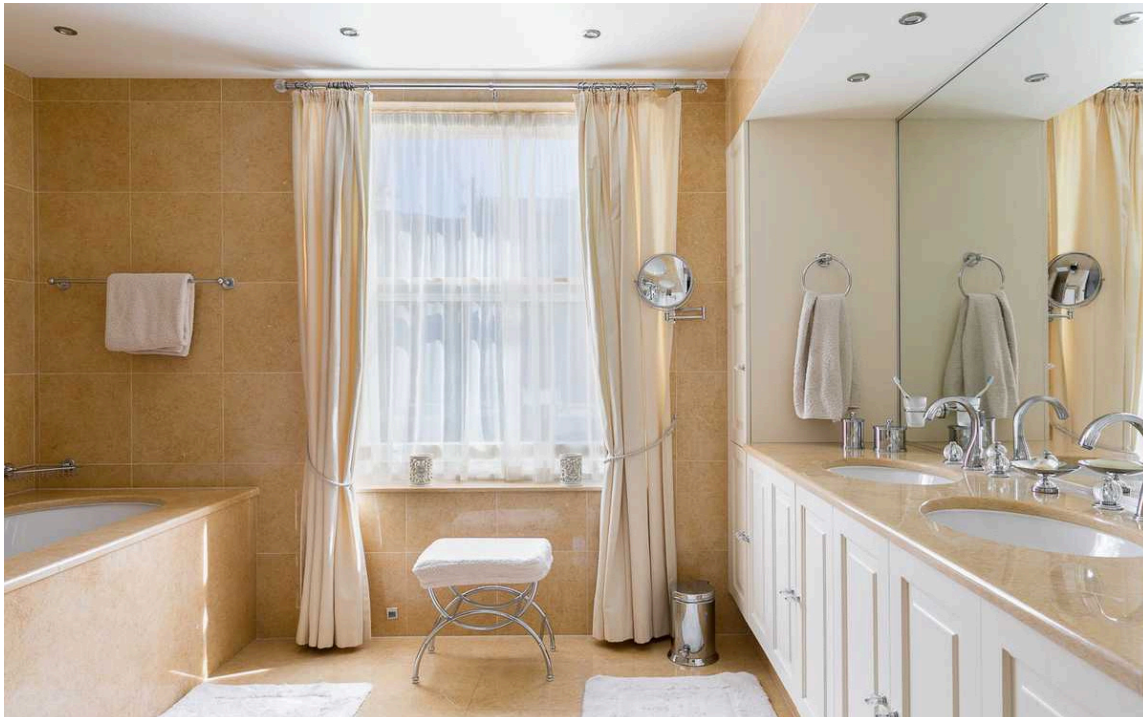
Downstairs, the lower ground floor features two more bedrooms and a guest WC. One of these bedrooms has access to the garden via the glass extension, while the other has separate street access. Below that, in the basement floor, is a gym with ensuite bathroom and a spacious media room.

img 1

Principal Bedroom

img 2

Principal Bathroom





Mews House

Almost unique among the properties on this square, No.12 includes the mews house at the far-end of the garden, 66 Queens Gate Mews. On its ground floor is an open-plan kitchen and dining area, while the first floor contains a pair of bedrooms sharing a bathroom. The second floor has a third bedroom, this one ensuite, with skylights and dormer windows for added illumination. This property also has access to the media room, gym, and main house.

img 1

Adjoining Mews

img 2

Mews Kitchen



Outdoor Spaces

The house features a paved, south-facing garden with space enough for outdoor dining, as well as potential access to the adjacent mews house. In addition, the first-floor balcony stretches across the entire width of the house, with views onto the garden square. The garden square is also open to residents, while its mature trees add to the sense of privacy and calm.



Balcony View

img 2

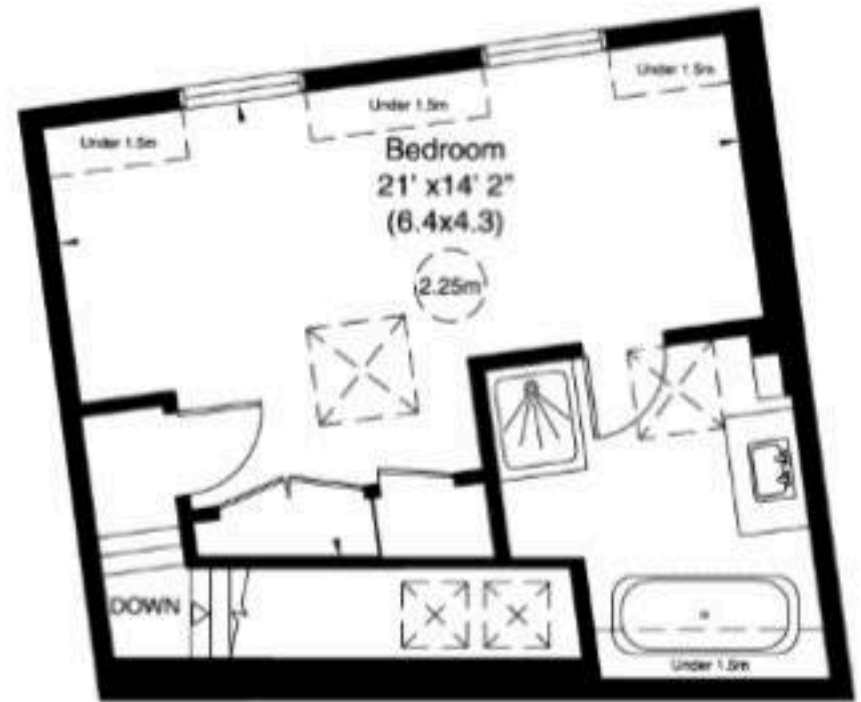
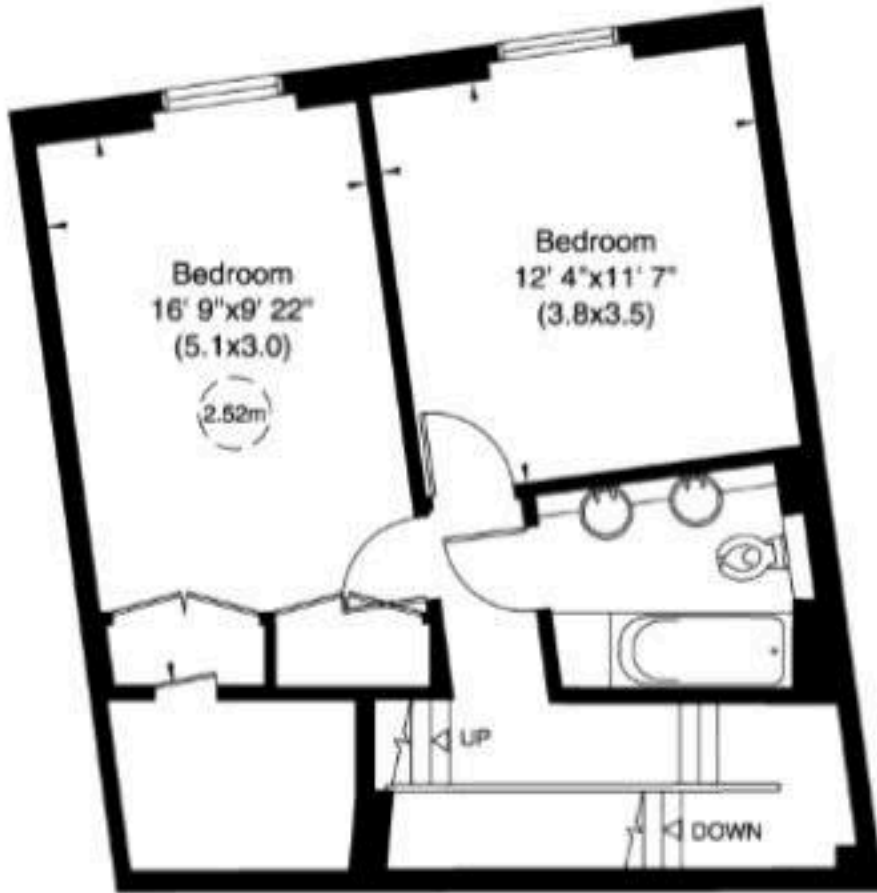


The Neighbourhood

12 Kensington Gate was once the site of the Kensington Workhouse, which inspired Charles Dickens's celebrated novel *Oliver Twist*. In the mid-nineteenth century, that building was replaced by the white stucco Italianate houses which now line the square, popular with aristocrats and politicians in the late Victorian Era. Kensington Gate remains a desirable address, both central and secluded. It is well placed for many of the neighbourhood's excellent schools, and within walking distance of Hyde Park and Kensington Gardens. In addition, the world-famous museums and cultural institutions of South Kensington are within easy reach.



Not to scale, for guidance only and must not be relied upon as a statement of fact. All measurements and areas are approximate only (and have been prepared in accordance with the current edition of the BCS Code of Measuring Practice).



**RUSSELL
SIMPSON**

Contact Us

+44 (0) 20 7225 0277

Contact us

info@russellsimpson.co.uk

Sydney Street

+44 (0) 20 7225 0277

151A Sydney Street
London
SW3 6NT

chelsea@russellsimpson.co.uk

Kensington Square

+44 (0) 20 3761 9691

13 Kensington Square
London
W8 5HD

kensington@russellsimpson.co.uk