



RUSSELL SIMPSON

Exceptionally spacious three-
bedroom lateral flat in a prestigious
Kensington mansion block

KENSINGTON COURT MANSIONS
KENSINGTON W8

Kensington Court Mansions

Sold

<div>BEDROOMS</div> <div>3</div>	<div>INTERNAL</div> <div>2,225 <small>SQ FT</small></div> <div>206 <small>SQM</small></div>	<div>OUTDOOR</div> <div>—</div>	<div>COUNCIL</div> <div>—</div>
<div>BATHROOMS</div> <div>3</div>		<div>EPC</div> <div>D</div>	<div>COUNCIL TAX</div> <div>H</div>
<div>TENURE</div> <div>Share of freehold</div>	<div>LEASE LENGTH</div> <div>948 <small>YEARS</small></div>	<div>GROUND RENT</div> <div>—</div>	<div>SERVICE CHARGE</div> <div>£8,424 <small>P/Y</small></div>

The Property

Grand corner flat with two balconies on a sought-after street close to Kensington High Street





Indoor Spaces

Entering the flat on the first floor, the generous front hall opens onto an impressive dining room with high ceilings, full-length sash windows and glorious wooden panelling. Next door is an impressive reception room with a corner bay window bringing light into the room and two French doors leading out onto a pair of balconies. This side of the flat also contains a fitted kitchen and a discreet utility room

Entertaining Spaces

The flat is decorated in a traditional style to suit the grand proportions and historic location. It also contains considerable storage space.





The Bedrooms

The other side of the flat offers three bedrooms. The generous principal bedroom has a dressing room and an ensuite bathroom with a large bath. There are two more bedrooms, one with a wide west-facing bay window, both sharing a bathroom.

img 2

Principal Bedroom



The Neighbourhood

The property includes a pair of balconies with enough space for outdoor seating. One of them has views over the attractive communal garden.

Kensington Court Mansions is a grand red-brick mansion block with lift and porter. Dating from the Victorian Era, its residents have access to a communal private garden. The building is conveniently positioned a short walk away from the restaurants, shops and underground station of Kensington High Street. In addition, the open spaces of Kensington Gardens and Hyde Park are within easy reach.



img 1

Balcony

img 2

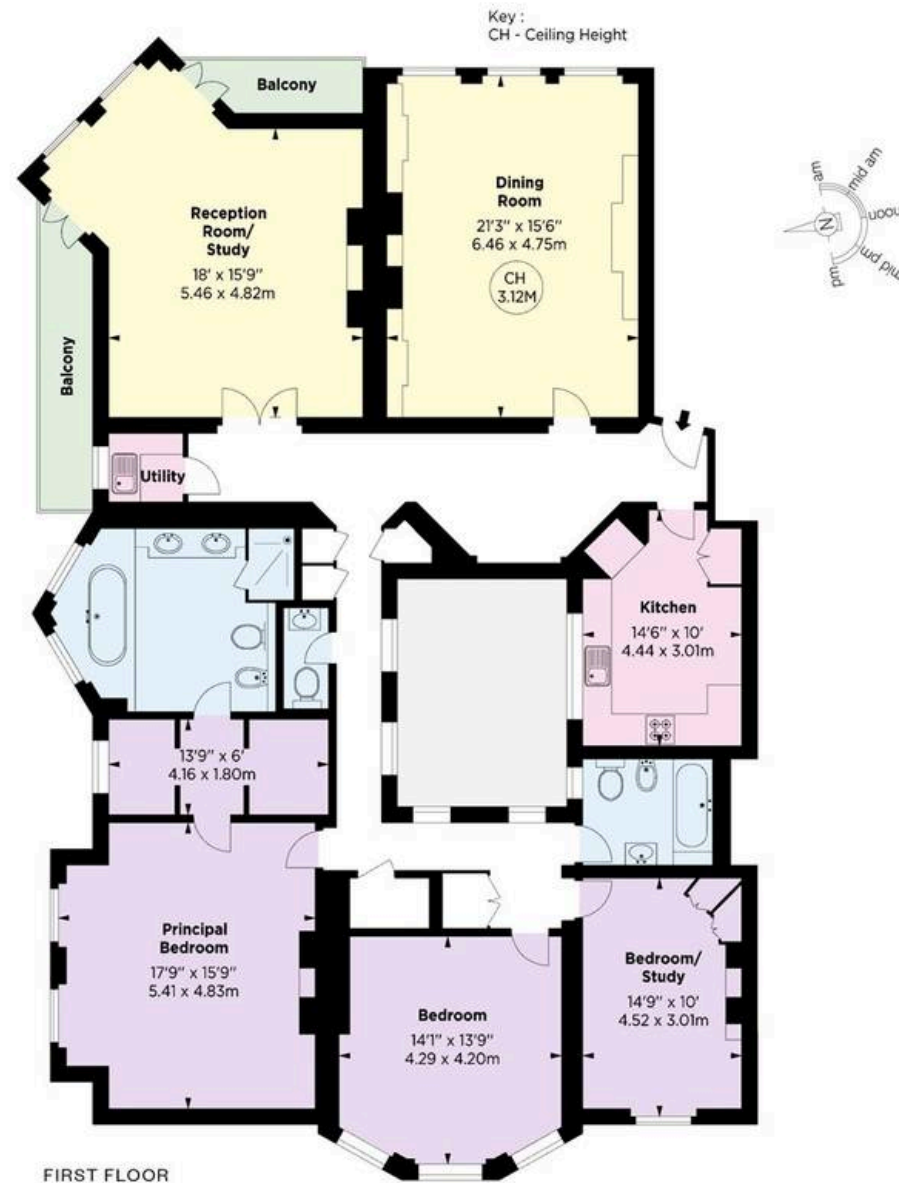
Communal Garden

Kensington Court Mansions, W8

Approx Gross Internal Area
2,225 sq ft / 206.70 sq m

**RUSSELL
SIMPSON**

This plan is for layout guidance only. Not drawn to scale unless stated. Windows and door openings are approximate. Whilst every care is taken in the preparation of this plan. Please check all dimensions, shapes, and compass bearings before making any decisions reliant upon them.



**RUSSELL
SIMPSON**

Contact Us

+44 (0) 20 3761 9691

13 Kensington Square
London
W8 5HD

kensington@russellsimpson.co.uk