

RUSSELL SIMPSON

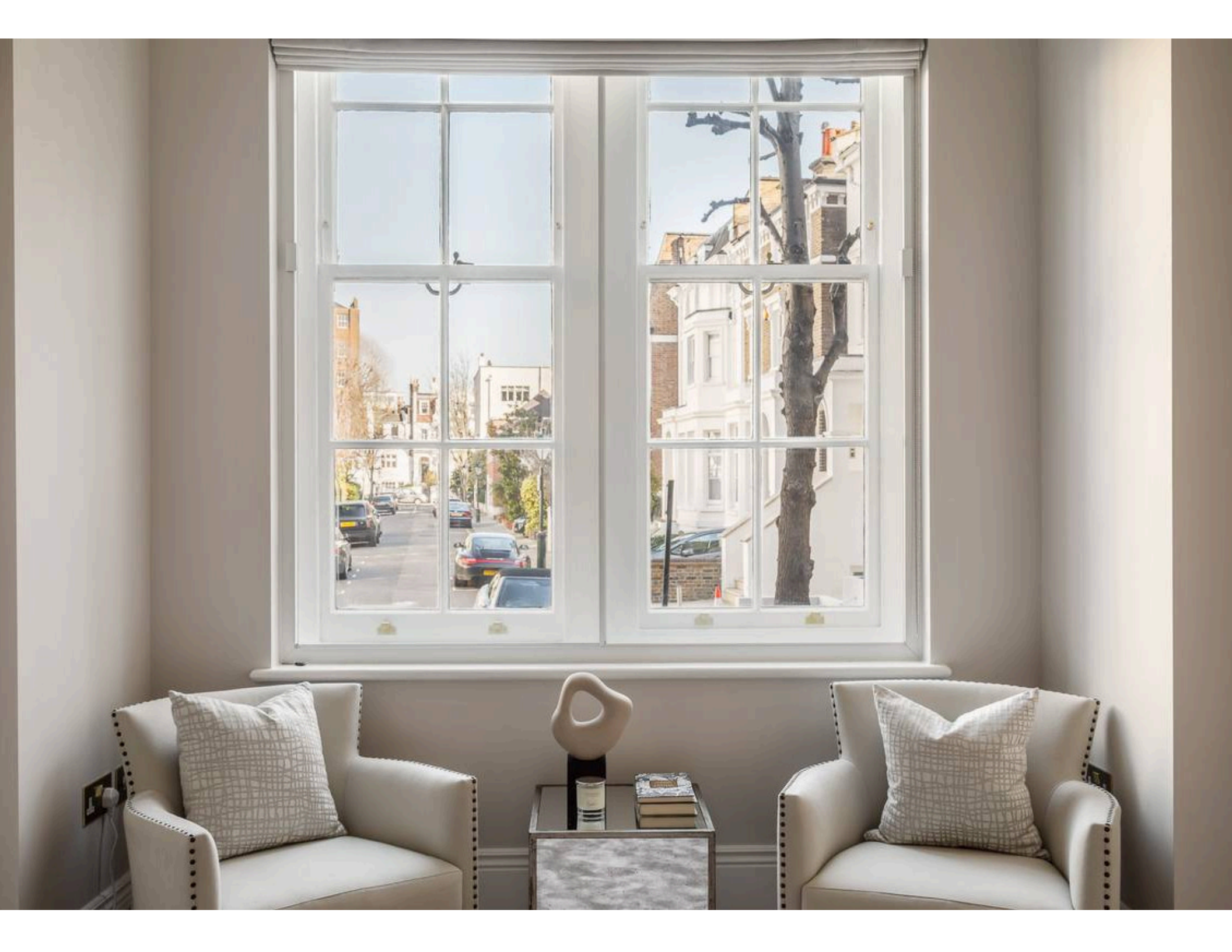
A newly configured and refurbished
lateral mansion flat

KENSINGTON COURT GARDENS
KENSINGTON W8

Kensington Court Gardens

Sold

BEDROOMS 4	INTERNAL 2,639 SQ FT	OUTDOOR —	COUNCIL —
BATHROOMS 4	245 SQM	EPC C	COUNCIL TAX D
TENURE Leasehold	LEASE LENGTH 96 YEARS	GROUND RENT £75 P/Y	SERVICE CHARGE £14,405 P/Y





The Property

A superb newly configured and refurbished raised ground floor four bedroom lateral mansion flat. The property offers great volume and has the unusual benefit of lovely views to the rear down Douro Place. There is a porter.

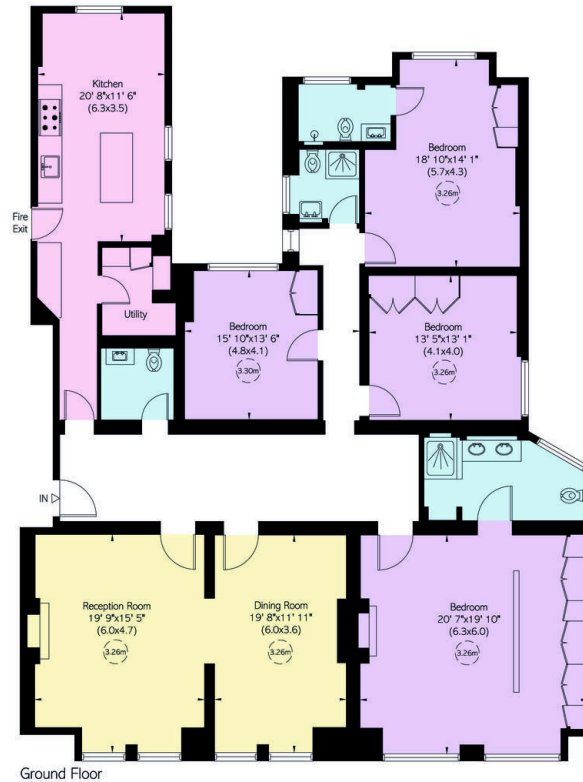


The Neighbourhood

This apartment is within close proximity to some fabulous schools and the green spaces of Kensington Gardens and Hyde Park.



KENSINGTON COURT GARDENS, KENSINGTON COURT PLACE, W8
Approximate Area = 2639 sq ft/ 245 sq m



VIEWING ARRANGEMENTS

Telephone: +44 (0) 20 3761 9691
Email: info@russellsimpson.co.uk

This plan is for layout guidance only. Not drawn to scale unless stated. Windows and door openings are approximate. While every care is taken in the preparation of this plan, please check all dimensions, dates and contents listings before making any decisions reliant upon them.

**RUSSELL
SIMPSON**

**RUSSELL
SIMPSON**

Contact Us

+44 (0) 20 7225 0277

Contact us

info@russellsimpson.co.uk

Sydney Street

+44 (0) 20 7225 0277

151A Sydney Street

London

SW3 6NT

chelsea@russellsimpson.co.uk

Kensington Square

+44 (0) 20 3761 9691

13 Kensington Square

London

W8 5HD

kensington@russellsimpson.co.uk