



## **RUSSELL SIMPSON**

Elegant four-bedroom lateral flat  
with beautiful views on one of West  
London's smartest streets

HOLLAND PARK  
HOLLAND PARK W11

# Holland Park

Sold

<div>BEDROOMS</div> <div>4</div>	<div>INTERNAL</div> <div>2,283 <small>SQ FT</small></div> <div>212 <small>SQM</small></div>	<div>OUTDOOR</div> <div>—</div>	<div>COUNCIL</div> <div>—</div>
<div>BATHROOMS</div> <div>3</div>		<div>EPC</div> <div>D</div>	<div>COUNCIL TAX</div> <div>H</div>
<div>TENURE</div> <div>Share of freehold</div>	<div>LEASE LENGTH</div> <div>-1 <small>YEARS</small></div>	<div>GROUND RENT</div> <div>—</div>	<div>SERVICE CHARGE</div> <div>£10,439 <small>P/Y</small></div>







# The Property

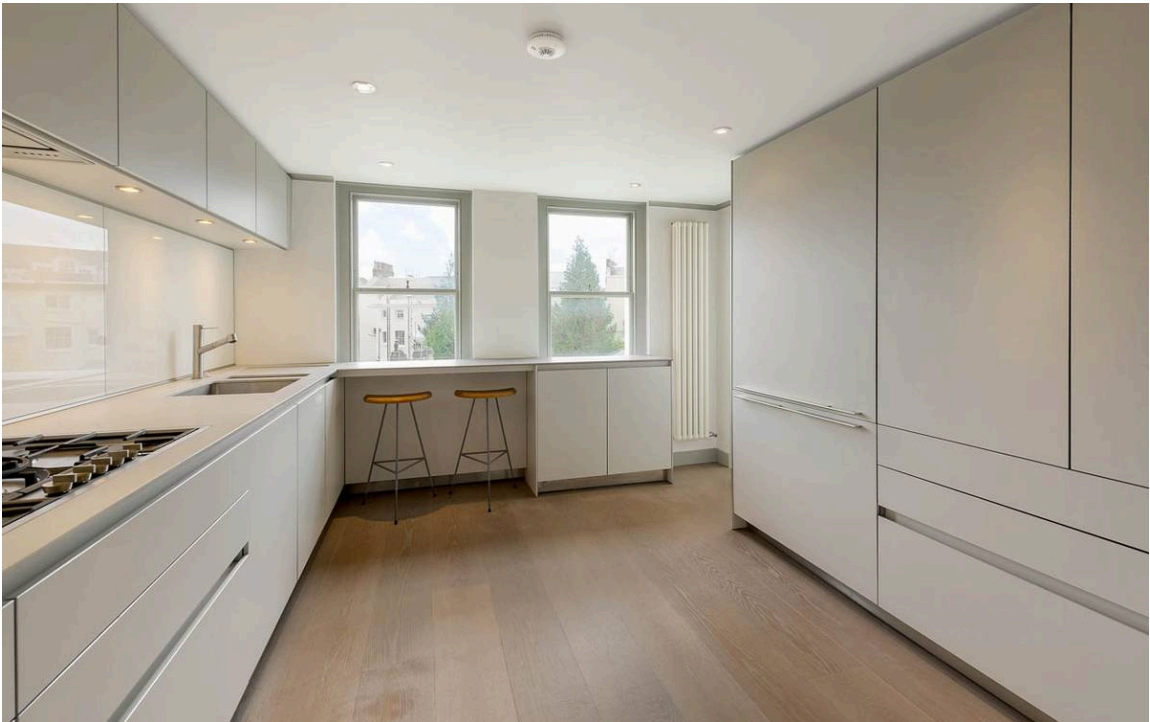
A spectacular first floor apartment (with lift) set within a glorious Grade II Listed Holland Park double fronted villa positioned opposite the entrance to Holland Park itself.

img 1

Sun Room

img 2

Kitchen





## The Bedrooms

---

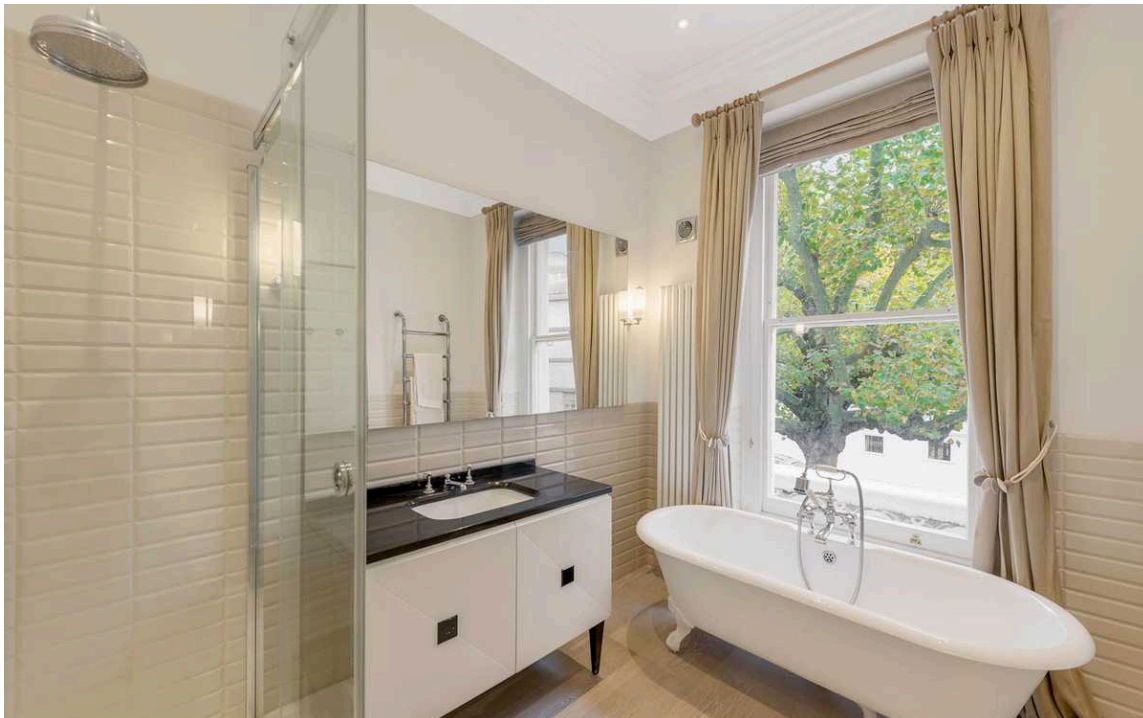
img 1

Principal Bedroom

img 2

---

Principal Bathroom



## Architectural Details

[Read more about the Italianate architecture of this property here.](#)





## The Neighbourhood

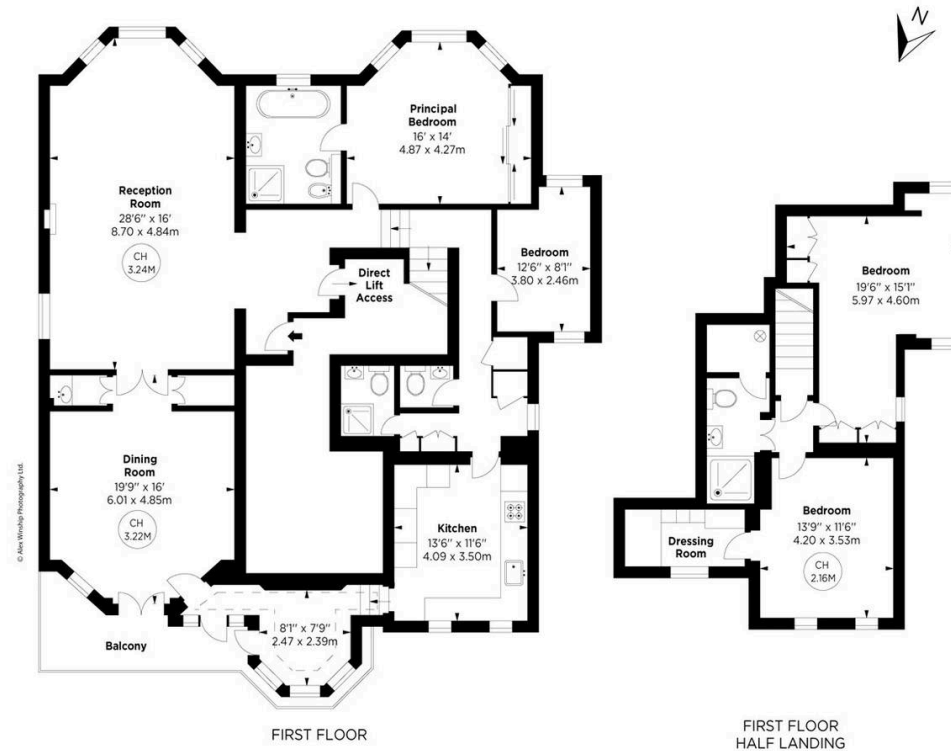
This lateral four bedroom home is presented in very good condition and has lovely views from the front and the rear due to its fabulous location on Holland Park.

## Holland Park, W11

APPROX. GROSS INTERNAL AREA \*  
2283 Sq Ft - 212.09 Sq M

Key :  
CH - Ceiling Height

This floorplan is for GUIDANCE ONLY and NOT FOR VALUATION purposes.



**ALEX WINSHIP**  
Photography

\* Provision for gas safety testing may be located on individual's gas meter. It is not intended for use as a guide to the actual dimensions and area of the property and is not intended to be used for valuation purposes. It is not intended to be used for valuation purposes.





**RUSSELL  
SIMPSON**

---

## Contact Us

+44 (0) 20 3761 9691

13 Kensington Square  
London  
W8 5HD

[kensington@russellsimpson.co.uk](mailto:kensington@russellsimpson.co.uk)