



RUSSELL SIMPSON

Elegant four-bedroom lateral flat
with beautiful views on one of West
London's smartest streets

HOLLAND PARK
HOLLAND PARK W11

Holland Park

£4,600,000

BEDROOMS 4	INTERNAL 2,283 SQ FT	OUTDOOR —	COUNCIL RBKC
BATHROOMS 3	212 SQM	EPC D	COUNCIL TAX H
TENURE Share of freehold	LEASE LENGTH —	GROUND RENT —	SERVICE CHARGE £10,439 P/Y





The Property

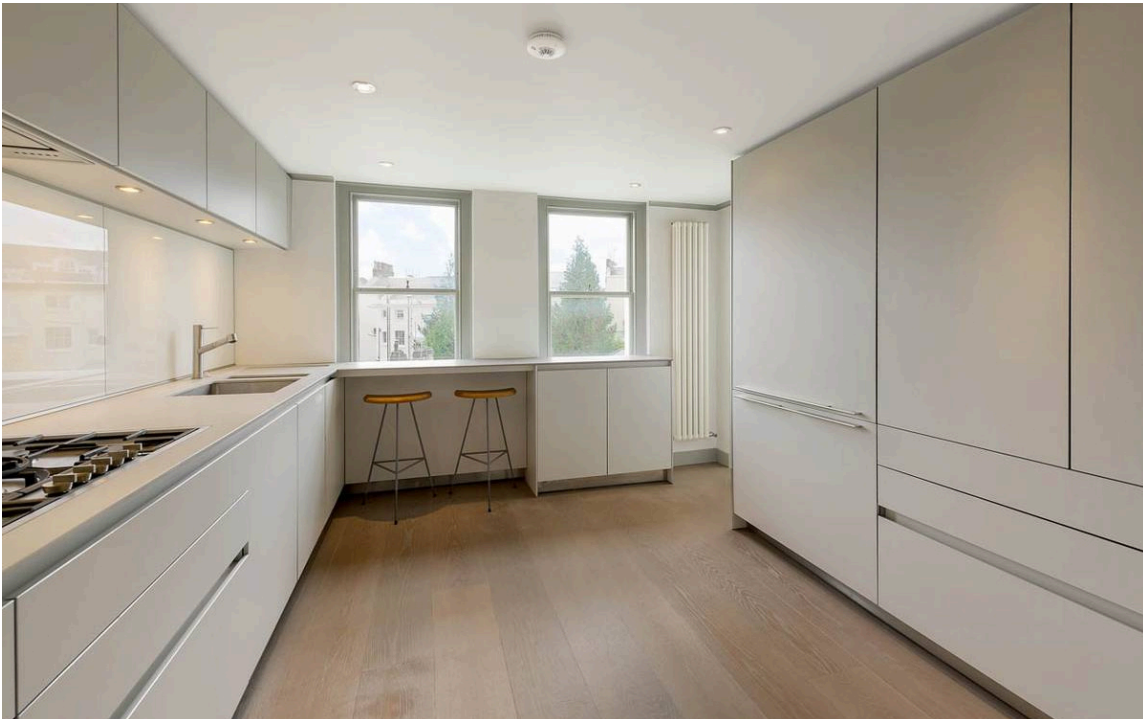
A spectacular first floor apartment (with lift) set within a glorious Grade II Listed Holland Park double fronted villa positioned opposite the entrance to Holland Park itself.

img 1

Sun Room

img 2

Kitchen





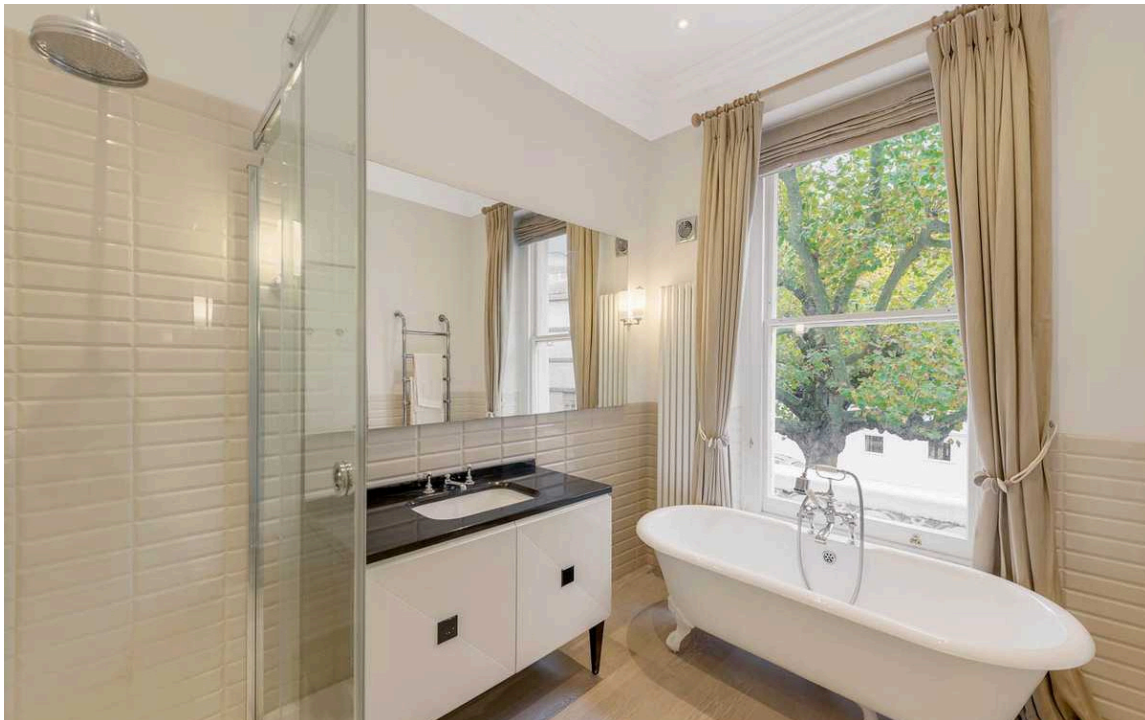
The Bedrooms

img 1

Principal Bedroom

img 2

Principal Bathroom



Architectural Details

[Read more about the Italianate architecture of this property here.](#)



The Neighbourhood

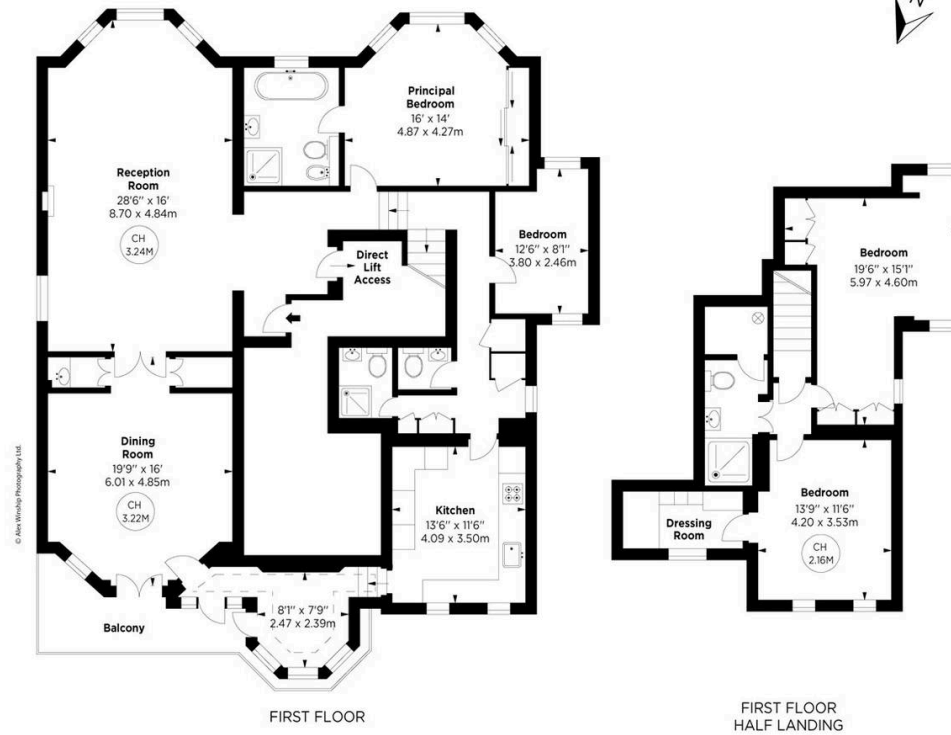
This lateral four bedroom home is presented in very good condition and has lovely views from the front and the rear due to its fabulous location on Holland Park.

Holland Park, W11

APPROX. GROSS INTERNAL AREA *
2283 Sq Ft - 212.09 Sq M

Key :
CH - Ceiling Height

This floorplan is for GUIDANCE ONLY and NOT FOR VALUATION purposes.



ALEX WINSHIP
Photography

* Provided for guidance only. Not to be used as a sole source of information. All dimensions are approximate and subject to change. All measurements and areas are approximate and subject to change. All dimensions are approximate and subject to change.



**RUSSELL
SIMPSON**

Contact Us

+44 (0) 20 3761 9691

13 Kensington Square
London
W8 5HD

kensington@russellsimpson.co.uk