



RUSSELL SIMPSON

Well-designed Chelsea house with
south-west facing garden and terrace

HASKER STREET
CHELSEA SW3

Hasker Street

Sold

BEDROOMS 3	INTERNAL 1,551 SQ FT	OUTDOOR 279 SQ FT	COUNCIL TAX G
BATHROOMS 2	144 SQM	EPC D	TENURE Freehold

The Property

Three bedroom house with contemporary interiors on a picturesque street close to South Kensington station

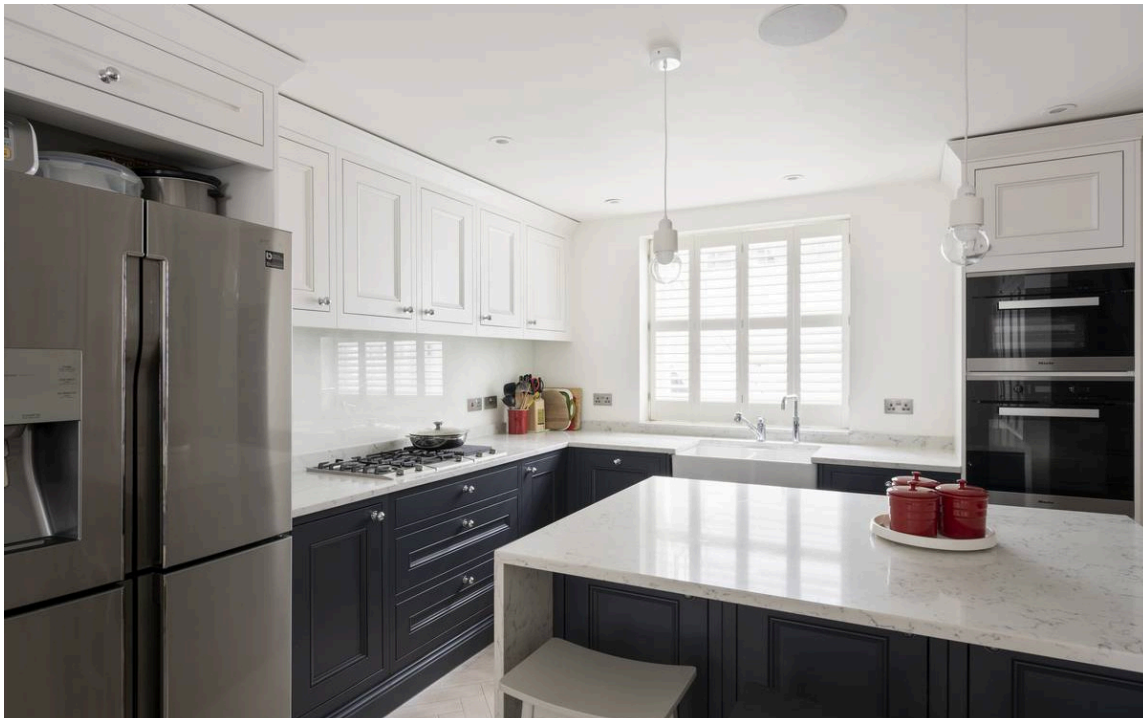
Entering the house on the ground floor, the front hall into onto a reception room running the entire length of the property. The space is well lit, thanks to the front sash window and the rear French doors, which lead out to the roof terrace. This floor also contains a home office.





Indoor Spaces

On the lower ground floor is an open-plan kitchen with a breakfast bar, leading through to a large dining room. Sliding glass doors open out onto the garden, while also bringing extra light into the room. Meanwhile, at the other end of the kitchen, a passageway provides additional street access and a guest loo.





The Bedrooms

The first floor consists of two bedrooms and a bathroom. The principal bedroom has considerable built-in storage space, as well as a pair of sash windows with shutters. Meanwhile, the second floor features a third bedroom, this one with an ensuite bathroom.





The Design

The house was substantially renovated in the last few years and has air-conditioning throughout. In addition, its muted colour scheme and modern, minimalist interiors gives an added sense of space and light.



Outdoor Spaces

The property includes a paved garden on the lower ground floor with enough space for outdoor seating. There is also a roof terrace on the ground floor, with both of these spaces facing south-west to receive the afternoon light.

The Neighbourhood

Hasker Street is a quiet road lined in low terrace houses with white stucco bases. From here, South Kensington and Sloane Square underground stations are both a short walk away. In addition, the restaurants and shops of the Fulham Road and the King's Road are within easy reach. Finally, the open spaces of Hyde Park and Kensington Gardens are also nearby.



Hasker Street, SW3

Approximate Internal Area
1,551 sq ft/ 144 sq m

Including limited use area and Plant Room
30 sq ft/ 3 sq m

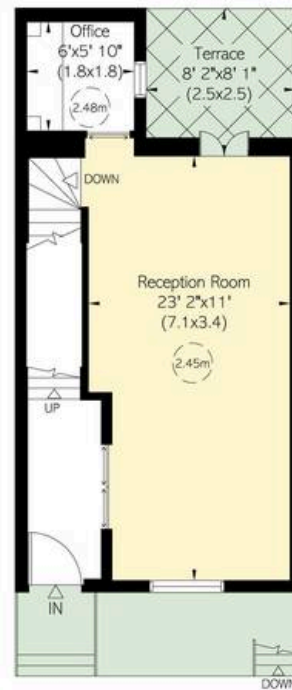
Outside Area
279 sq ft/ 26 sq m

RUSSELL SIMPSON

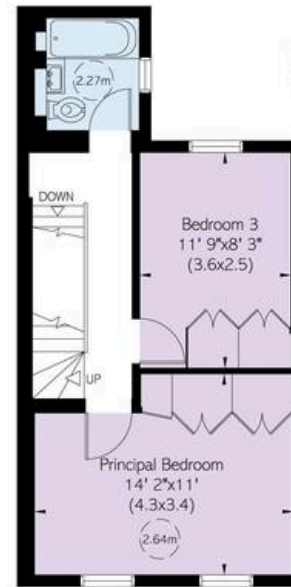
This plan is for layout guidance only. Not drawn to scale unless stated. Windows and door openings are approximate. Whilst every care is taken in the preparation of this plan, please check all dimensions, shapes, and compass bearings before making any decisions reliant upon them.



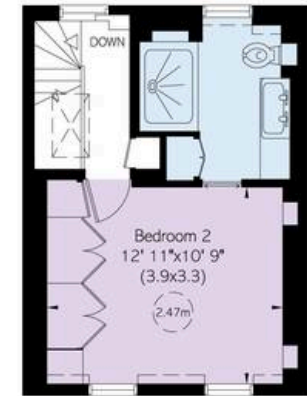
Lower Ground Floor



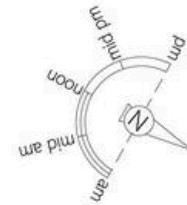
Ground Floor



First Floor



Second Floor



Reduced head height below 1.5m

**RUSSELL
SIMPSON**

Contact Us

+44 (0) 20 7225 0277

Contact us

info@russellsimpson.co.uk

Sydney Street

+44 (0) 20 7225 0277

151A Sydney Street

London

SW3 6NT

chelsea@russellsimpson.co.uk

Kensington Square

+44 (0) 20 3761 9691

13 Kensington Square

London

W8 5HD

kensington@russellsimpson.co.uk