

## **RUSSELL SIMPSON**

Spectacular Chelsea townhouse with  
modern interiors and off-street  
parking

HARLEY GARDENS  
CHELSEA SW10

# Harley Gardens

Sold

BEDROOMS 5	INTERNAL 5,253 SQ FT	OUTDOOR 2,145 SQ FT	COUNCIL TAX H
BATHROOMS 5	488 SQM	EPC C	TENURE Freehold



## The Property

Five bedroom family home with summer house and home cinema on a sought-after street near the Fulham Road

Entering the house on the raised ground floor, the spacious front hall leads through to a double drawing room. Extending from the front of the house to the rear, this well-lit space includes high ceilings, a bay window, and double French doors opening out onto a terrace. In addition, this floor contains a study with a second pair of French doors giving access to the terrace.





## Indoor Spaces

The lower ground floor contains a well-proportioned kitchen, with sliding doors leading through to a family room. This is a modern space, with floor-to-ceiling windows giving added brightness and opening out onto the garden. In addition, this floor contains a second study and guest WC.





## The Bedrooms

The principal bedroom is found on the first floor, with a dressing room and ensuite bathroom. This floor includes a second bedroom with its own ensuite, while the second floor adds two more bedrooms and one more bathroom, as well as access to the roof terrace.

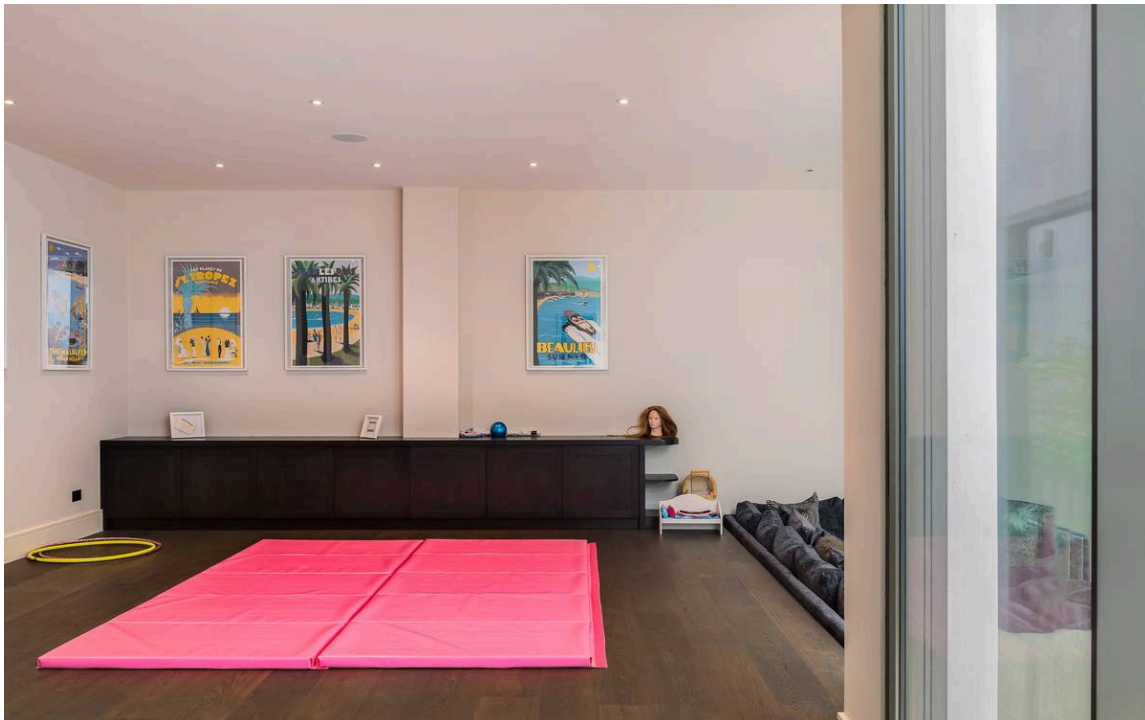
This unusually wide house has been recently renovated and is presented in excellent condition. The interiors blend classic and contemporary design, and there is air conditioning throughout.





## Entertaining Spaces

The property includes a basement with a large home cinema. This floor also contains a bedroom with a next-door bathroom, a utility room and further storage space.



## Outdoor Spaces

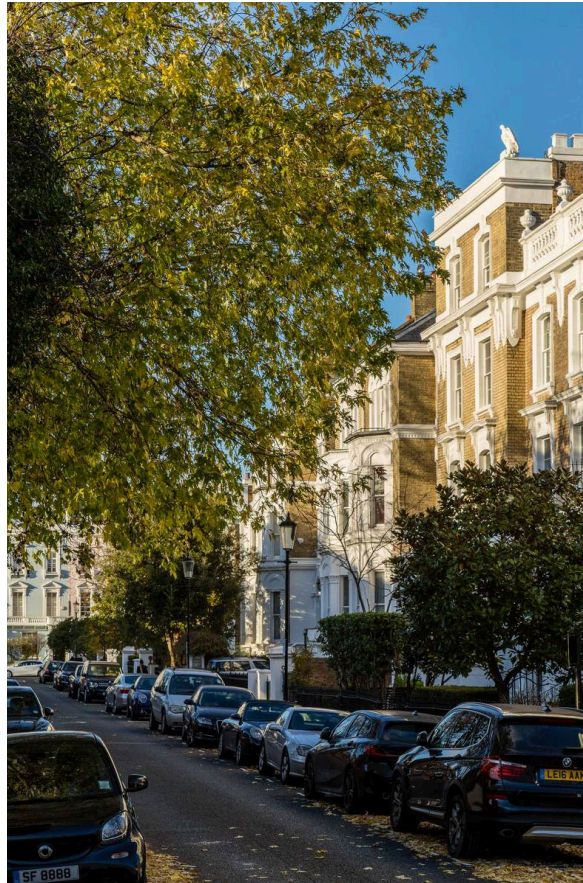
The property includes a paved rear garden with a large summer house at the far end, a flexible space that could be used as an office, gym or additional reception room. There is also a ground-floor terrace with garden views, and a front drive with off-street parking. Finally, there is a second-floor roof terrace with enough space for outdoor seating.



## The Neighbourhood

Harley Gardens was built in 1851, consisting of semi-detached houses with stucco bases and dressings. No.14 was home to the artist Frank Dobson, one of the most highly regarded sculptors of the twentieth century.

The street is part of the Boltons Conservation Area, among the most attractive and prestigious parts of West London. From here, the restaurants and shops of the Fulham Road are close, while the King's Road is also within walking distance.



**HARLEY GARDENS, SW10**  
 Approximate Area = 5253 sq ft/ 488 sq m  
 Including Summer House (212 sq ft/ 20 sq m)  
 Outside Area = 2146 sq ft/ 199 sq m



**VIEWING ARRANGEMENTS**

Telephone: +44 (0) 20 7225 0277  
 Email: [info@russellsimpson.co.uk](mailto:info@russellsimpson.co.uk)

**RUSSELL SIMPSON**

Our office is a trading subsidiary of The Russell Simpson Group. Details and descriptions are for information only and do not constitute an offer. The information is provided for general information only and is not intended to be used for any specific purpose. The information is provided for general information only and is not intended to be used for any specific purpose. The information is provided for general information only and is not intended to be used for any specific purpose.

**RUSSELL  
SIMPSON**

---

## Contact Us

+44 (0) 20 7225 0277

Contact us

[info@russellsimpson.co.uk](mailto:info@russellsimpson.co.uk)

---

## Sydney Street

+44 (0) 20 7225 0277

151A Sydney Street  
London  
SW3 6NT

[chelsea@russellsimpson.co.uk](mailto:chelsea@russellsimpson.co.uk)

---

## Kensington Square

+44 (0) 20 3761 9691

13 Kensington Square  
London  
W8 5HD

[kensington@russellsimpson.co.uk](mailto:kensington@russellsimpson.co.uk)