



## **RUSSELL SIMPSON**

Charming three-bedroom period  
home with delightful garden in  
South Kensington

GLOUCESTER ROAD  
SOUTH KENSINGTON SW7

Gloucester Road

£2,795,000

BEDROOMS 3	INTERNAL  1,878 SQ FT  174 SQM	OUTDOOR  721 SQ FT	COUNCIL TAX  RBKC
BATHROOMS 2		EPC  E	TENURE  Freehold

## The Property

A beautifully proportioned three bedroom terraced house with a generous garden in a prime South Kensington location.

Arranged over four floors, this elegant period property offers versatile living spaces with abundant natural light. The ground floor features a bright entrance hallway with classic architectural details. Beyond is a well-appointed dining room that flows seamlessly into a spacious kitchen with fitted units and ample preparation space. French doors at the rear of the kitchen open directly onto the garden, creating a wonderful indoor-outdoor connection. A convenient guest WC completes this floor.







The Reception Room

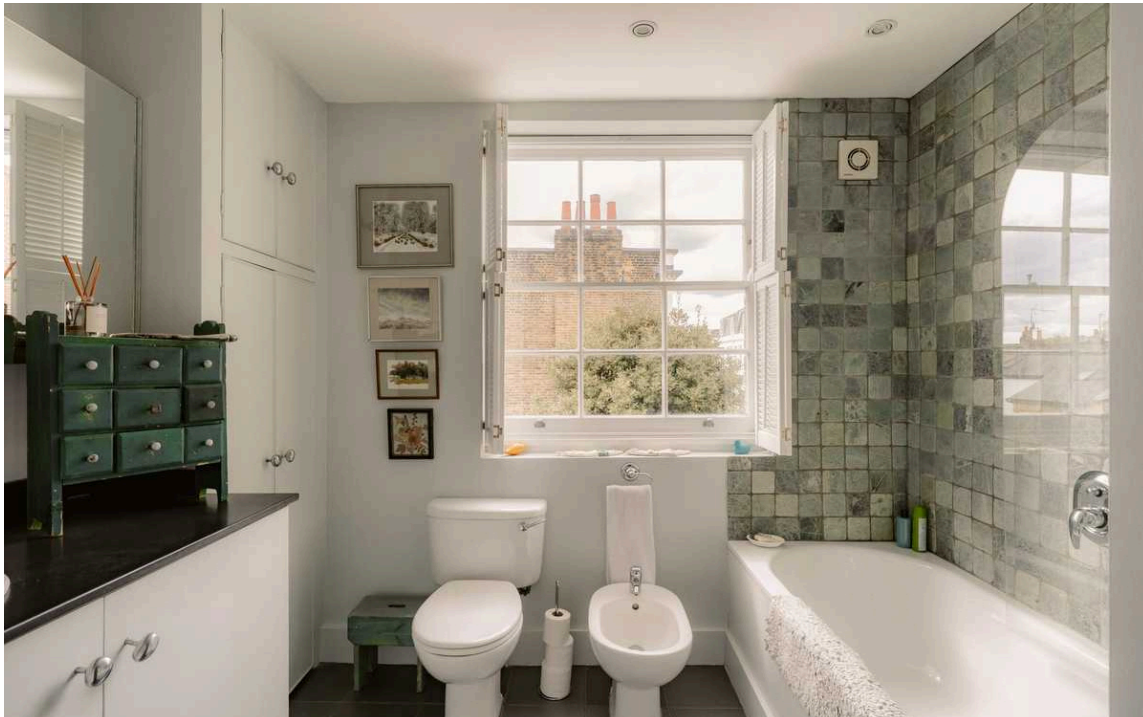




## The Bedrooms

The first floor comprises two generously sized bedrooms. The principal bedroom benefits from large sash windows that flood the space with natural light, while the second bedroom offers equally well-proportioned dimensions.

Ascending to the second floor reveals a superb third bedroom spanning the entire floor, with dual-aspect windows and an adjoining bathroom. The lower ground floor provides additional versatility with a fourth bedroom, a separate kitchen area, and direct access to a charming patio. This level also includes a utility area and a vault, offering excellent storage options.

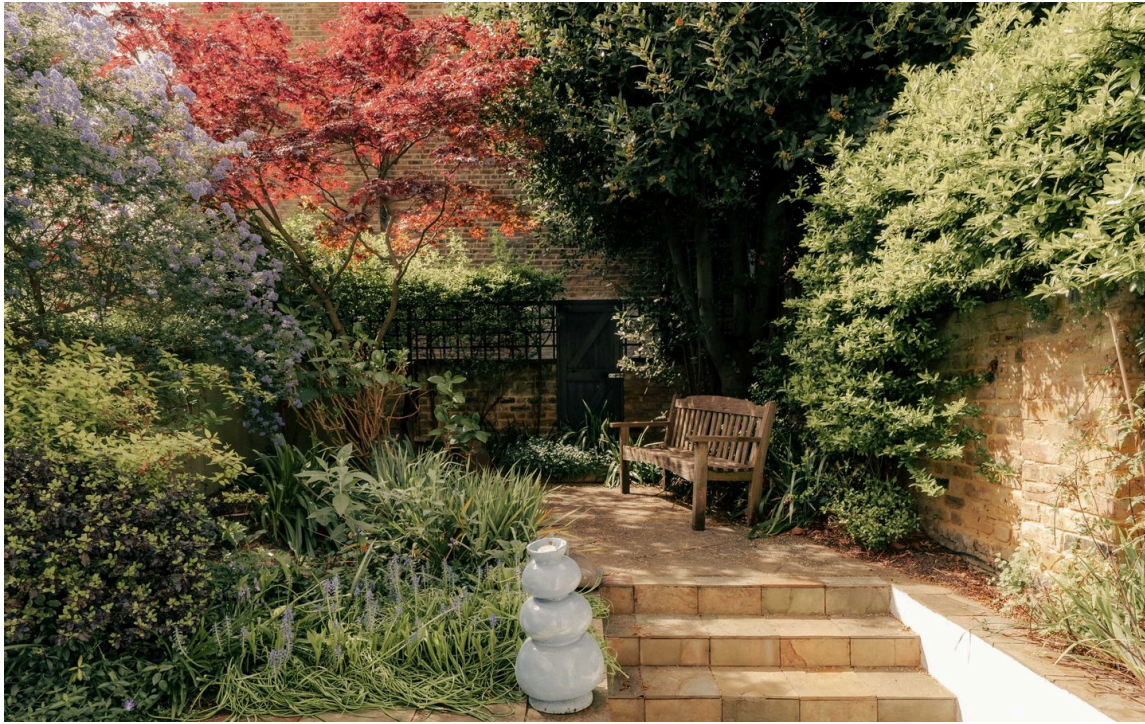




## The Design

The property retains many of its original period features, including decorative cornicing, wooden flooring, and traditional fireplaces. The classic façade with its distinctive white trim and wrought iron balconies contributes to the home's considerable kerb appeal.





## Outdoor Spaces

The house benefits from a substantial garden accessed directly from the kitchen. This tranquil outdoor retreat features mature planting, a paved patio area ideal for al fresco dining, and a wooden bench positioned to capture the sunlight. Additionally, the lower ground floor opens onto a separate patio, providing a secluded outdoor space.

# The Neighbourhood

Gloucester Road is a distinguished address in South Kensington, combining residential charm with exceptional convenience. The property is moments away from the amenities of Gloucester Road, including its underground station (District, Circle and Piccadilly lines), supermarkets, and independent shops.

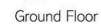
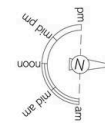
The cultural attractions of South Kensington, including the Natural History Museum, Victoria & Albert Museum, and Science Museum, are within easy walking distance. The green spaces of Hyde Park and Kensington Gardens are also nearby, offering a welcome respite from city life. The area is well-served by highly regarded schools, making it particularly appealing to families.



**RUSSELL  
SIMPSON**

Including limited use area  
and vault

This plan is for layout guidance only. Not drawn to scale unless stated. Windows and door openings are approximate. Whilst every care is taken in the preparation of this plan, please check all dimensions, shapes, and compass bearings before making any decisions reliant upon them.



### First Floor



**RUSSELL  
SIMPSON**

---

## Contact Us

+44 (0) 20 7225 0277

151A Sydney Street  
London  
SW3 6NT

[chelsea@russellsimpson.co.uk](mailto:chelsea@russellsimpson.co.uk)

In accordance with the Property Mis-Description Act 1991, the following details have been prepared in good faith, and are not intended to constitute part of an offer or contract. Any information contained herein (whether in the text, plans or photographs) is given in good faith but should not be relied upon as being a statement of representation of fact. Nothing in these Particulars shall be deemed to be a statement that the property is in good condition or otherwise nor that any services or facilities are in good working order. Any measurements of distances referred to herein are approximate only. October 2021