

## **RUSSELL SIMPSON**

Delightfully decorated house with  
light-filled living spaces, generous  
terrace and independent garden  
studio

FULHAM ROAD  
CHELSEA SW10

Fulham Road

£4,950,000

BEDROOMS 3	INTERNAL 2,469 SQ FT	OUTDOOR 1,475 SQ FT	COUNCIL TAX RBKC, G
BATHROOMS 2	229 SQM	EPC D	TENURE Freehold

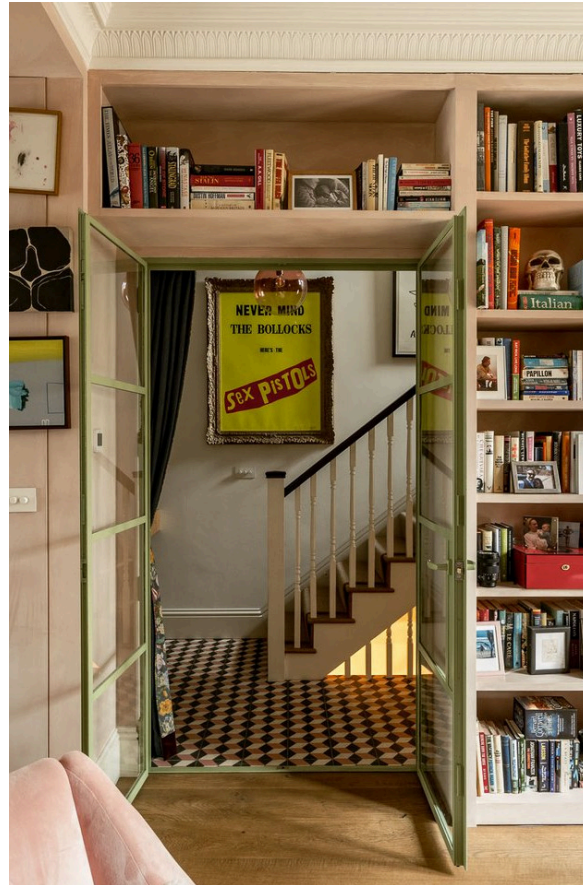




# The Property

Sophisticated and stylish four-bedroom family home with off-street parking close to the King's Road

Entering the house on the raised ground floor, the front hall leads through to a double reception room. Front and rear French doors open onto respective terraces, giving this room a double aspect and filling the space with light. This floor also features a guest WC.

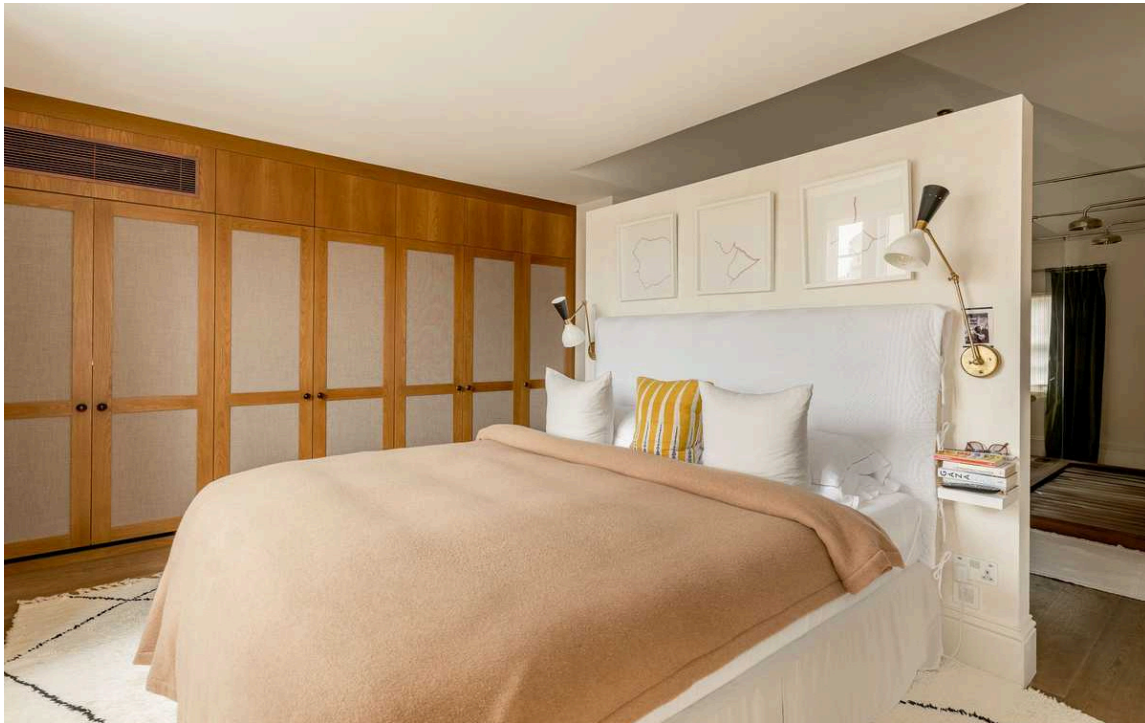


## Entertaining Spaces

The lower ground floor is almost entirely occupied by a generous living area. This includes an open-plan kitchen with central island breakfast bar, as well as a dining room and a family snug. Bifolding French doors open onto the south-east facing garden, meaning the kitchen is well-lit throughout the day. This floor also contains a convenient utility room with separate street access.







## The Bedrooms

The first floor consists of two bedrooms, sharing a bathroom with a bath. The third floor features the principal bedroom suite, including a bedroom, a dressing area, and an exceptionally large bathroom, also with a bath and walk-in shower.







## Outdoor Spaces

The house is set back from the street with a paved front garden that has off-street parking for a car. There is also a south-east facing rear terrace with wooden decking and enough space for outdoor eating. Finally, the south-east facing rear garden includes a delightful free-standing wooden studio with ensuite bathroom, currently configured as a bedroom, but can also be used as a home office.





## The Design

The house has been decorated in a characterful style. It blends classical and contemporary details to create a stylish but comfortable space presented in superb condition.







## The Neighbourhood


The house lies midway along the popular and prestigious address of Fulham Road. From here, the restaurants and shops of the King's Road are close, while Fulham Broadway underground and Imperial Wharf overground stations are also nearby. In addition, the tree-lined avenues and Victorian tombs of Brompton Cemetery are a short walk away.

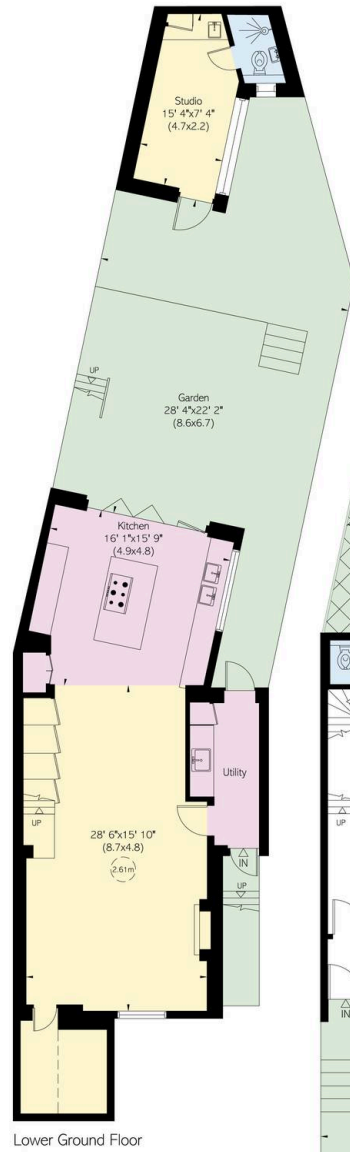
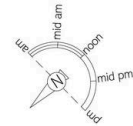
Fulham Road, SW10

**RUSSELL  
SIMPSON**

**Approximate Internal Area**  
2,469 sq ft / 229 sq m  
**Including limited use area  
and outside studio**  
163 sq ft / 15 sq m  
**Outside Area**  
1,479 sq ft / 137 sq m

This plan is for layout guidance only. Not drawn to scale unless stated. Windows and door openings are approximate. Whilst every care is taken in the preparation of this plan, please check all dimensions, shapes, and compass bearings before making any decisions reliant upon them.

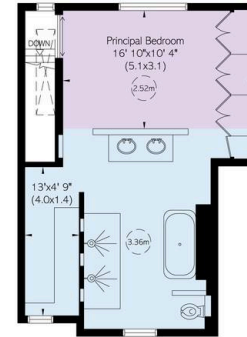
 Reduced head height below 1.5m



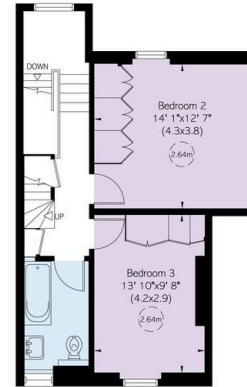
Lower Ground Floor



Ground Floor



Second Floor



First Floor



**RUSSELL  
SIMPSON**

---

## Contact Us

+44 (0) 20 7225 0277

151A Sydney Street  
London  
SW3 6NT

[chelsea@russellsimpson.co.uk](mailto:chelsea@russellsimpson.co.uk)