



RUSSELL SIMPSON

Spacious mews house with stylish
interiors in Knightsbridge

ENNISMORE GARDENS MEWS
KNIGHTSBRIDGE SW7

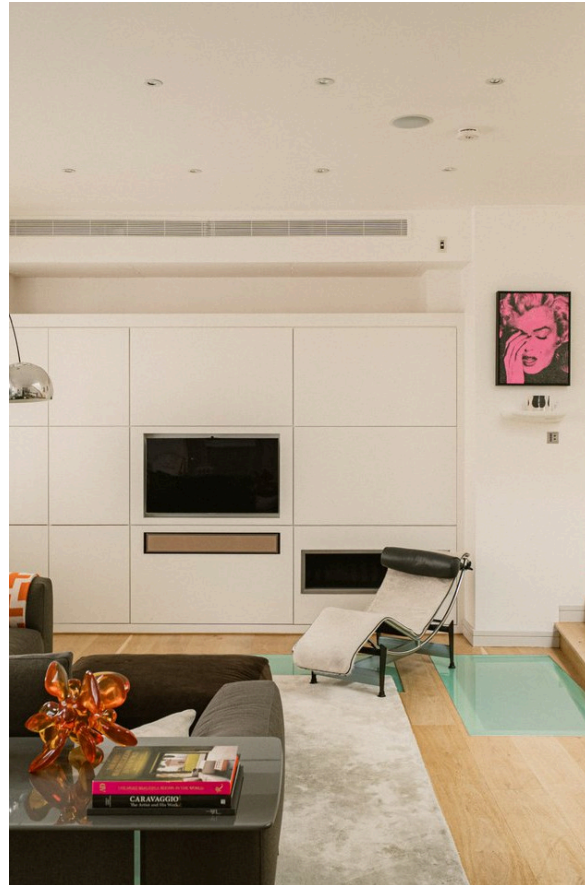
Ennismore Gardens Mews

£3,850,000

BEDROOMS 4	INTERNAL 1,977 SQ FT	OUTDOOR 754 SQ FT	COUNCIL TAX Westminster City, H
BATHROOMS 3	183 SQM	EPC C	TENURE Freehold

The Property

Four-bedroom mews house on a beautiful cobbled street close to Hyde Park





Reception Room

Entering the house on the ground floor, the front hall opens to a generous reception room. This includes an open-plan kitchen, as well as separate dining and seating areas.

Indoor Spaces

The lower ground floor includes a reception room with an ensuite bathroom and dressing room, which could be used as a bedroom. In addition, this floor contains a large utility room and additional storage space. The property is decorated in a tasteful contemporary style and presented in good condition.





The Bedrooms

An open staircase leads to three bedrooms on the first floor. The principal bedroom has an ensuite bathroom, considerable built-in storage, and French doors opening onto a balcony. There is a second bedroom with a balcony, as well as a third bedroom and shared bathroom.





Outdoor Spaces & The Neighbourhood

The property includes three balconies, one with access to the flat roof.

Ennismore Gardens Mews is a well-preserved and picturesque mews street with pastel-painted houses and a cobbled road. Both South Kensington and Knightsbridge underground stations are within walking distance, while the open spaces of Hyde Park are also nearby. In addition, the many cultural institutions of South Kensington are close, including world-class museums and concert halls.

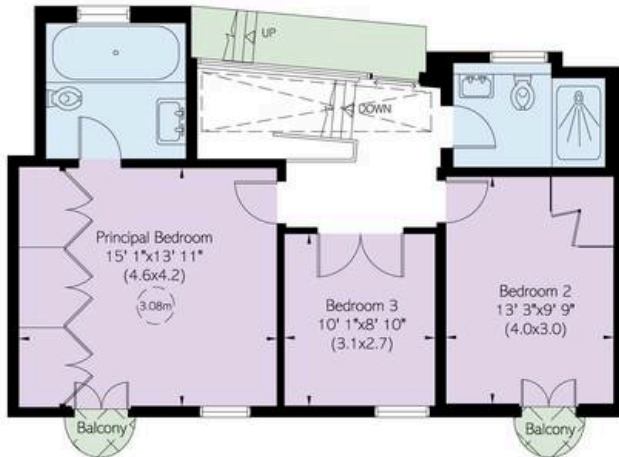
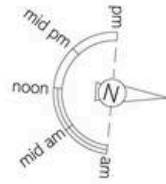
Ennismore Gardens, SW7

**RUSSELL
SIMPSON**

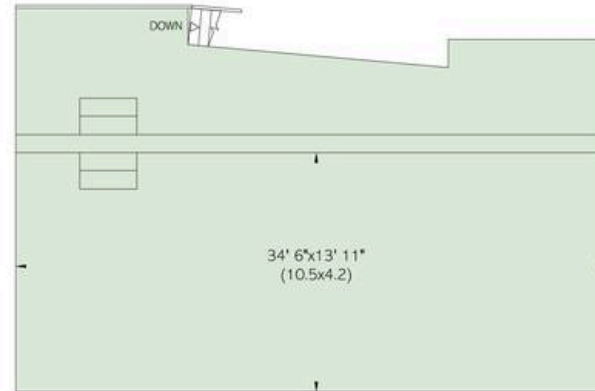
Approximate Internal Area
1,977 sq ft/ 184 sq m

Outside Area
755 sq ft/ 70 sq m

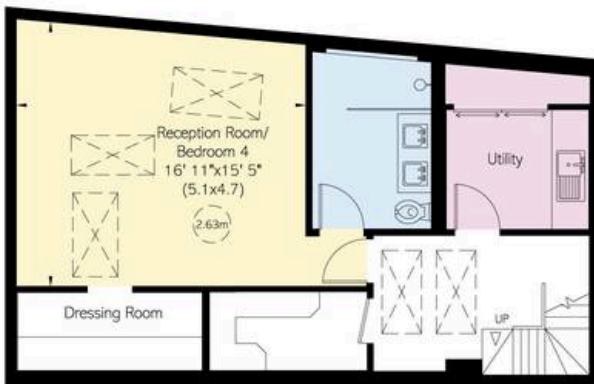
This plan is for layout guidance only. Not drawn to scale unless stated. Windows and door openings are approximate. Whilst every care is taken in the preparation of this plan, please check all dimensions, shapes, and compass bearings before making any decisions reliant upon them.



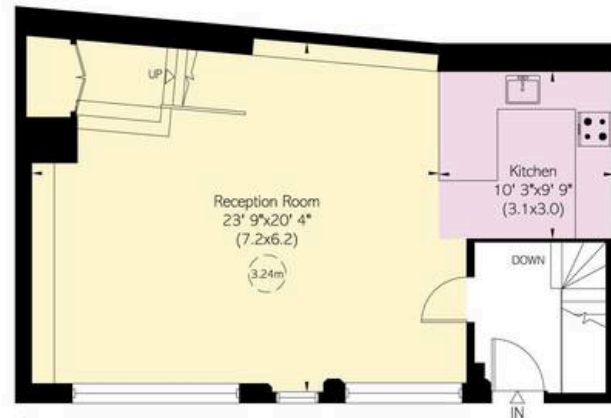
First Floor



Roof



Lower Ground Floor



Ground Floor

**RUSSELL
SIMPSON**

Contact Us

+44 (0) 20 7225 0277

151A Sydney Street
London
SW3 6NT

chelsea@russellsimpson.co.uk