



RUSSELL SIMPSON

Newly renovated lateral penthouse
flat with exceptional views and
communal garden access

EGERTON GARDENS
KNIGHTSBRIDGE SW3

Egerton Gardens

£7,750,000

| | | | |
|-----------------------------|---------------------------|----------------------|---------------------|
| BEDROOMS 3-3 | INTERNAL 1,902 SQ FT | OUTDOOR 341 SQ FT | COUNCIL RBKC |
| BATHROOMS 3 | 176 SQM | EPC B | COUNCIL TAX H |
| TENURE Share of freehold | LEASE LENGTH 990 YEARS | GROUND RENT — | SERVICE CHARGE — |



The Property

Spacious three-bedroom lateral duplex apartment with immaculate turnkey interiors in the heart of Knightsbridge.

The fifth floor is entirely occupied by a sublime living area. This includes separate dining and seating spaces, as well as a bespoke open-plan kitchen with Gaggenau appliances and a discreet utility room behind. Double French doors on both sides of the room lead out onto terraces, combining with the overhead skylights and wooden floors to create a bright and graceful room with beautiful views.

Indoor Spaces

This unusually large lateral flat has been newly renovated by the award-winning Jubilee Partners. It includes air conditioning throughout and a fully integrated smart home system. The property is finished to the highest standard and presented in turnkey condition.



img 1

Entrance Hall



img 2

Kitchen Details



The Bedrooms

Stepping into the flat on the fourth floor, the door opens onto a generous entrance hall. This floor contains three bedroom suites, including a principal bedroom with ample wardrobes and a well-proportioned ensuite bathroom. The other two bedrooms are also ensuite, with marble bathrooms adding to the sense of elegance. A study, a guest bathroom and further storage space complete this floor.





Russell Simpson



Egerton Gardens

Outdoor Spaces

Residents also have the right to access the communal gardens. The building has a lift that leads directly to the apartment entrance.

The flat includes a pair of terraces. The larger of the two faces south-east and features a seating area, an outdoor kitchen and spectacular panoramic views over Egerton Crescent and the central London skyline. A second terrace on the other side of the building looks towards Alexander Square and the Baroque splendour of the London Oratory.

img 2

Terrace



The Neighbourhood

Egerton Gardens is lined with beautiful red brick Victorian houses, many of them built by Alexander Thorn in 1886. The street is exceptionally well-positioned, moments from the restaurants and shops of Knightsbridge and Walton Street. Hyde Park and Kensington Gardens are likewise nearby.

Egerton Gardens, SW3

Approx Gross Internal Area

1,902.4 sq ft

Outside Area

342 sq ft

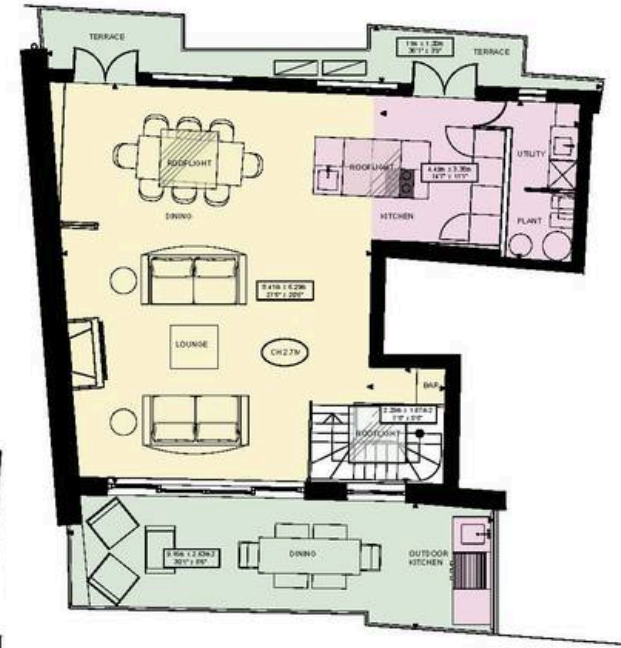
Total Area

2,244.4 sq ft

RUSSELL SIMPSON



ENTRANCE FLOOR



TOP FLOOR

This plan is for layout guidance only. Not drawn to scale unless stated. Windows and door openings are approximate. Whilst every care is taken in the preparation of this plan, please check all dimensions, shapes, and compass bearings before making any decisions reliant upon them.

**RUSSELL
SIMPSON**

Contact Us

+44 (0) 20 7225 0277

Contact us

info@russellsimpson.co.uk

Sydney Street

+44 (0) 20 7225 0277

151A Sydney Street
London
SW3 6NT

chelsea@russellsimpson.co.uk

Kensington Square

+44 (0) 20 3761 9691

13 Kensington Square
London
W8 5HD

kensington@russellsimpson.co.uk