

## **RUSSELL SIMPSON**

Beautifully restored Grade II listed  
six-bedroom family Freehold home  
close to Sloane Square station

EATON TERRACE  
BELGRAVIA SW1W

# Eaton Terrace

£5,995,000

BEDROOMS 5	INTERNAL 2,963 SQ FT	OUTDOOR 576 SQ FT	COUNCIL TAX RBKC, H
BATHROOMS 4	275 SQM	EPC —	TENURE Freehold



## The Property

Tastefully designed house with garden, terrace and elegant interiors on a sought-after street

## Indoor Spaces

Entering the house on the raised ground floor, the front hall opens onto a double drawing room that runs the entire length of the property. This stylish space includes a formal seating area and an informal television room. There is also a home office on the half-landing with access to the terrace.





## Entertaining Spaces

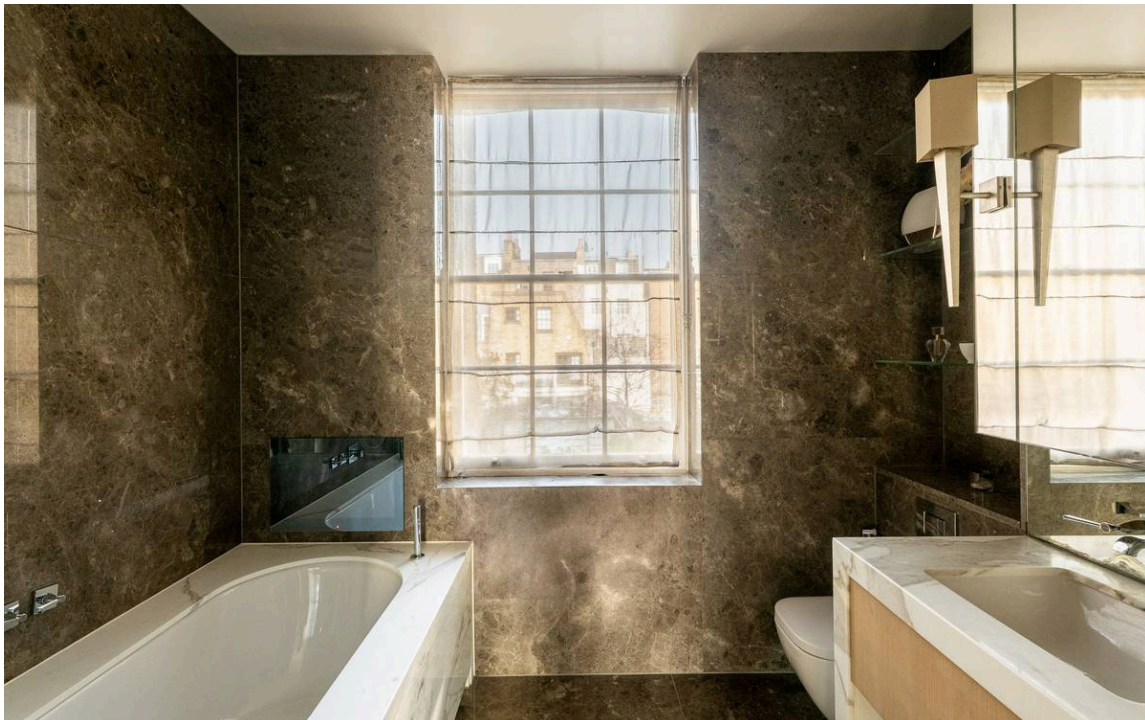
The lower ground floor features a fitted kitchen with modern units and a central island. There is also a breakfast area, a utility room, a guest WC and separate street access. Furthermore, a generous reception room offers both dining and seating spaces, as well as sliding French doors that lead out into the garden and a long overhead skylight bringing added illumination.





## The Principal Bedroom

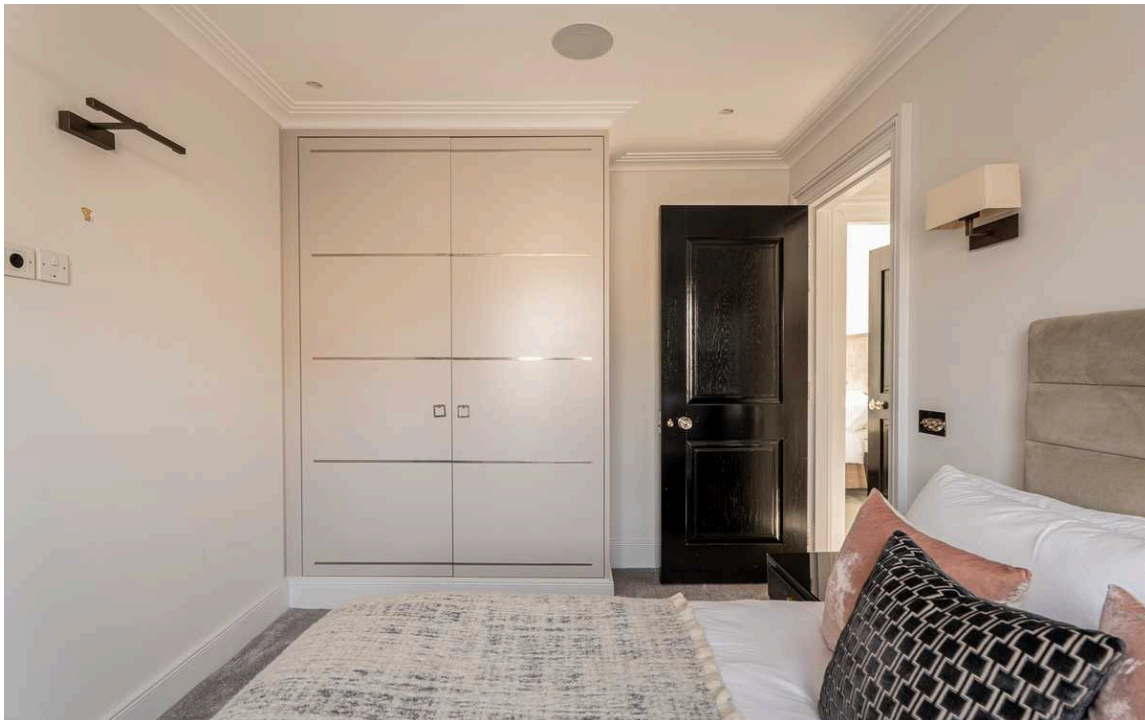
The first floor is entirely occupied by the principal bedroom suite. This includes a bedroom with full-length windows opening onto the front balcony, a corridor wardrobe and a well-proportioned bathroom with a bath. There is another bathroom on the half-landing.





## Further Bedrooms

The second floor features a pair of bedrooms, one with an ensuite bathroom. The third floor offers two more bedrooms, sharing a bathroom, and bringing the total number to five.





## Outdoor Spaces

The house includes a rear garden on two separate levels with planted beds and a paved seating area. There is also a rear terrace and a front balcony.



## The Design

The house has been recently renovated in a tasteful contemporary style. The sophisticated interiors were finished to a high standard, with air conditioning throughout.





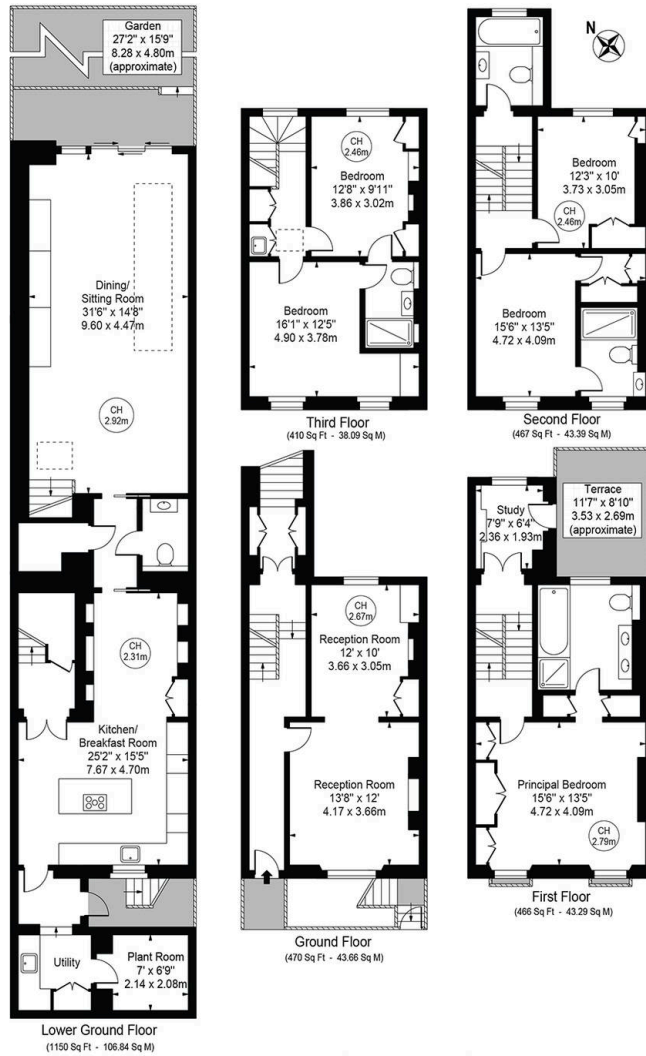
## The Neighbourhood

Eaton Terrace was built in the late Georgian period, around the same time as the famous square of the same name. Most of the houses are Grade II listed, with stucco bases and dressings.

Today, the street is a prestigious and popular address in Belgravia. It From here, Sloane Square underground station is a short walk away, while Victoria Station is also close. The restaurants and shops of Chelsea are within easy reach, while nearby Orange Square hosts a popular farmers' market each weekend.

# Eaton Terrace

Approx. Gross Internal Area 2963 Sq Ft - 275.27 Sq M



For Illustration Purposes Only - Not To Scale

This floor plan should be used as a general outline for guidance only and does not constitute in whole or in part an offer or contract. Any intending purchaser or lessee should satisfy themselves by inspection, searches, enquiries and full survey as to the correctness of each statement. Any areas, measurements or distances quoted are approximate and should not be used to value a property or be the basis of any sale or let.

Copyright Morriarti Photography & Design LTD

**RUSSELL  
SIMPSON**

---

## Contact Us

+44 (0) 20 7225 0277

151A Sydney Street  
London  
SW3 6NT

[chelsea@russellsimpson.co.uk](mailto:chelsea@russellsimpson.co.uk)