



RUSSELL SIMPSON

Impressive family home with
beautiful interiors on a prestigious
Belgravia street

EATON TERRACE
BELGRAVIA SW1W

Eaton Terrace

Sold

BEDROOMS 4	INTERNAL 3,095 SQ FT	OUTDOOR 895 SQ FT	COUNCIL TAX H
BATHROOMS 3	287 SQM	EPC D	TENURE Freehold

The Property

Grade II white stucco terrace house with four bedrooms decorated in a traditional style close to Sloane Square station





Indoor Spaces

Entering the house on the ground floor, the front hall opens onto a generous dining room with separate study area. At the back of the house is a sitting room with double French doors opening onto a small terrace with stairs leading down to the garden, a large storeroom, and a guest cloakroom.



Entertaining Spaces

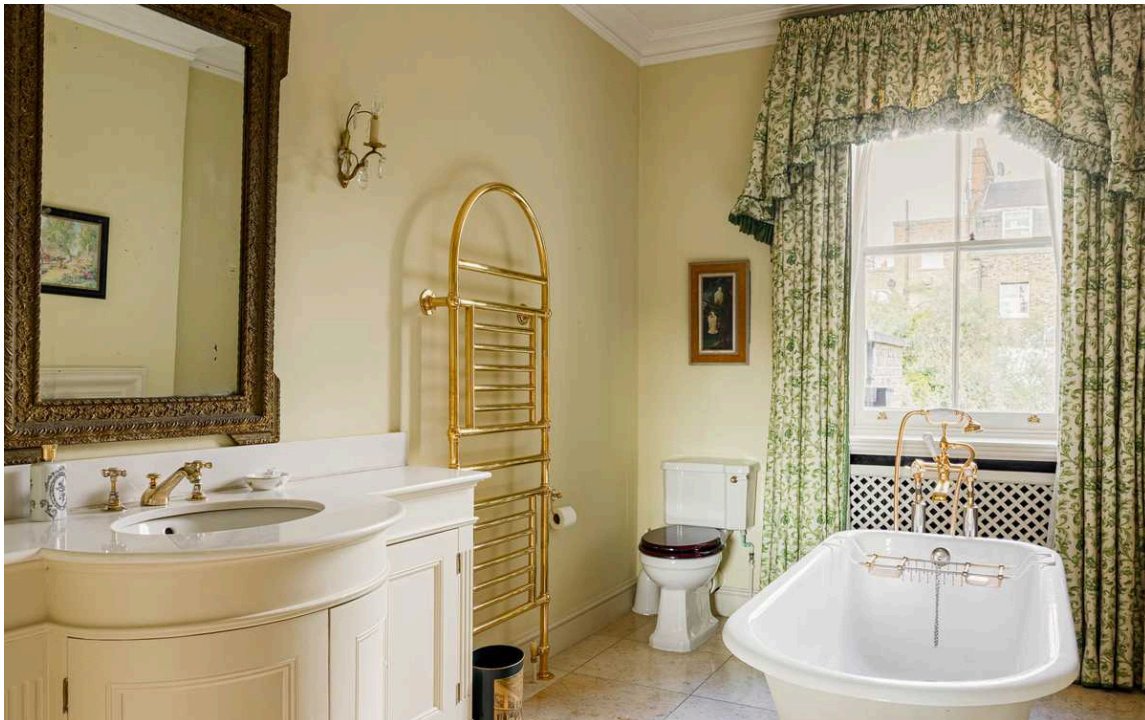
The rear section of the lower ground floor is centred on a spacious kitchen with an informal eating area and connected breakfast room. A bow window with French doors leads directly into the garden. This floor also includes a self-contained suite with bedroom, shower room and kitchenette, as well as separate street access and large internal storage vault. The first floor is entirely occupied by a grand drawing room with south-west-facing sash windows looking out on the street.





The Bedrooms

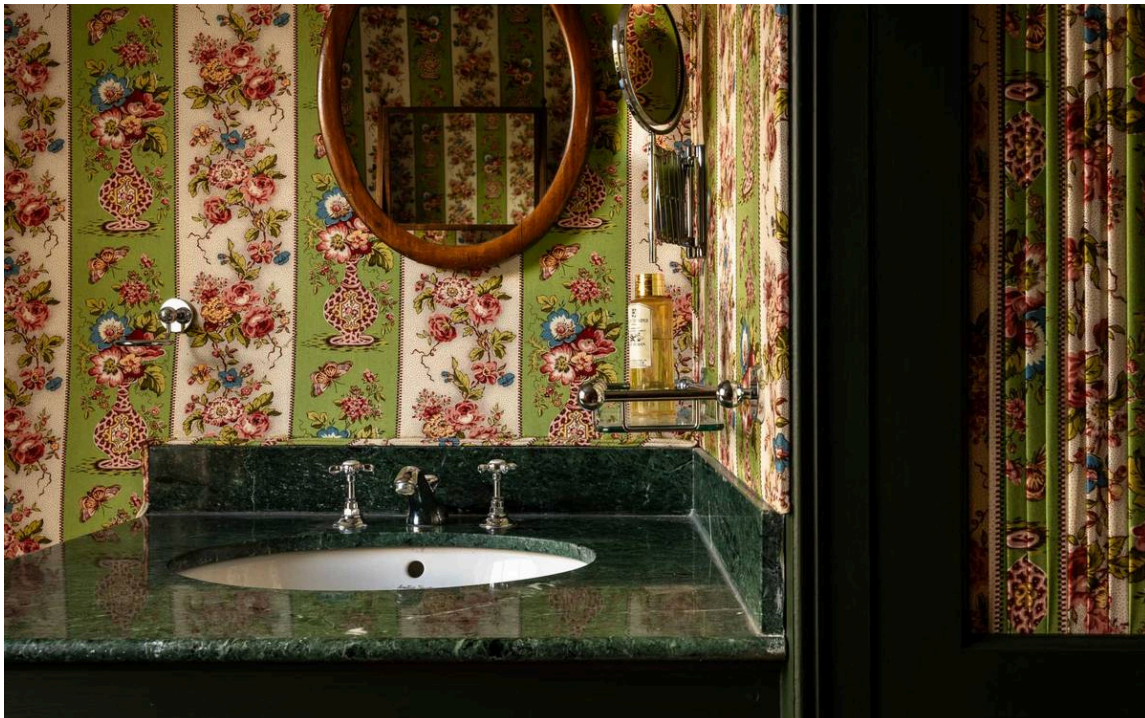
The second floor consists of a principal bedroom suite with a magnificent bathroom and a dressing room on the half-landing. The third floor offers two more bedrooms with a shared bathroom on the half-landing.





The Design

The house has been decorated in a traditional style to suit the historic address. This includes beautiful wallpaper and curtains, as well as elegant bathrooms, all of them well maintained over the years.



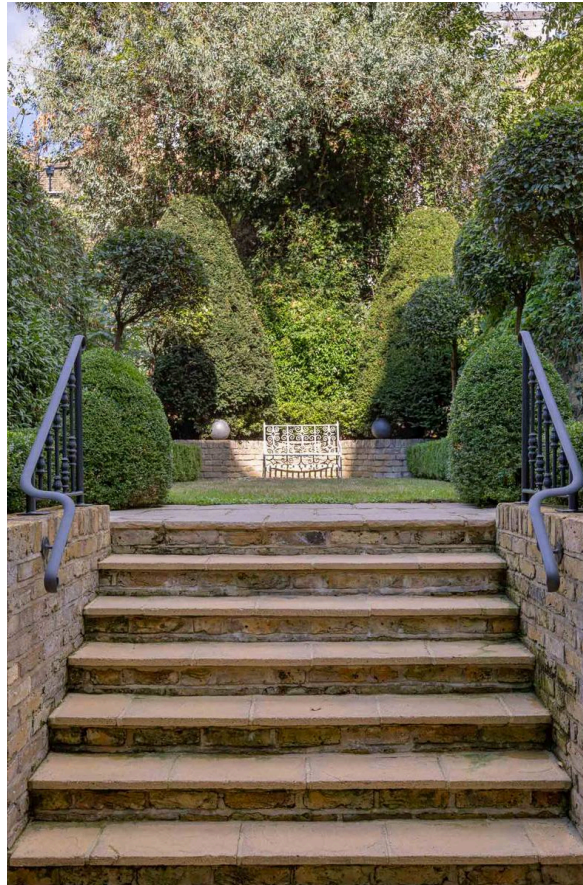


Outdoor Spaces

The property includes a tasteful garden with a paved area for outdoor dining, as well as a lawn and planted flowerbeds.

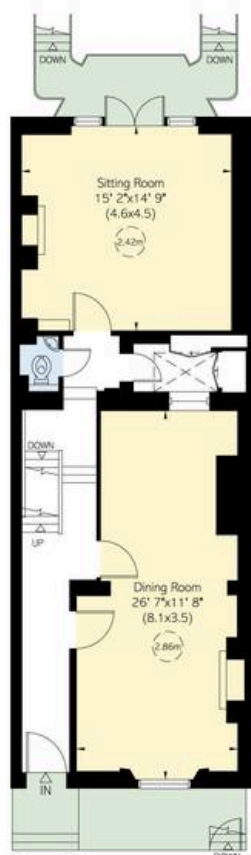
The Neighbourhood

Eaton Terrace is a prestigious and popular address. It was built in the late Georgian period, around the same time as the famous square of the same name. Most of the houses are Grade II listed, with stucco bases and dressings; the house is unusual in being painted entirely white. From here, Sloane Square underground station is a short walk away, while Victoria Station is also close. The restaurants and shops of Chelsea are within easy reach, while nearby Orange Square hosts a popular farmers' market each weekend.

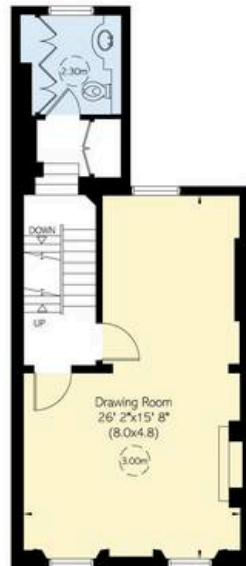




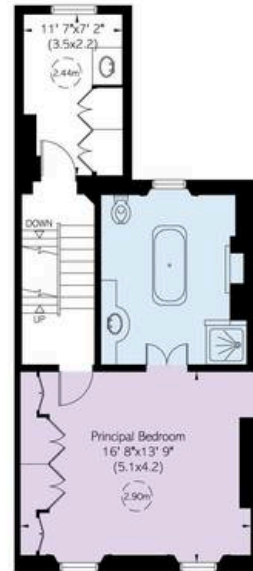
Lower Ground Floor



Ground Floor



First Floor



Second Floor



Third Floor

Eaton Terrace, SW1

**RUSSELL
SIMPSON**

Approximate Internal Area

3,095 sq ft / 287 sq m

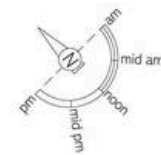
Including limited use area and vault

79 sq ft / 7 sq m

Outside Area

896 sq ft / 83 sq m

This plan is for layout guidance only. Not drawn to scale unless stated. Windows and door openings are approximate. Whilst every care is taken in the preparation of this plan, please check all dimensions, shapes, and compass bearings before making any decisions reliant upon them.



**RUSSELL
SIMPSON**

Contact Us

+44 (0) 20 7225 0277

Contact us

info@russellsimpson.co.uk

Sydney Street

+44 (0) 20 7225 0277

151A Sydney Street
London
SW3 6NT

chelsea@russellsimpson.co.uk

Kensington Square

+44 (0) 20 3761 9691

13 Kensington Square
London
W8 5HD

kensington@russellsimpson.co.uk