

RUSSELL SIMPSON

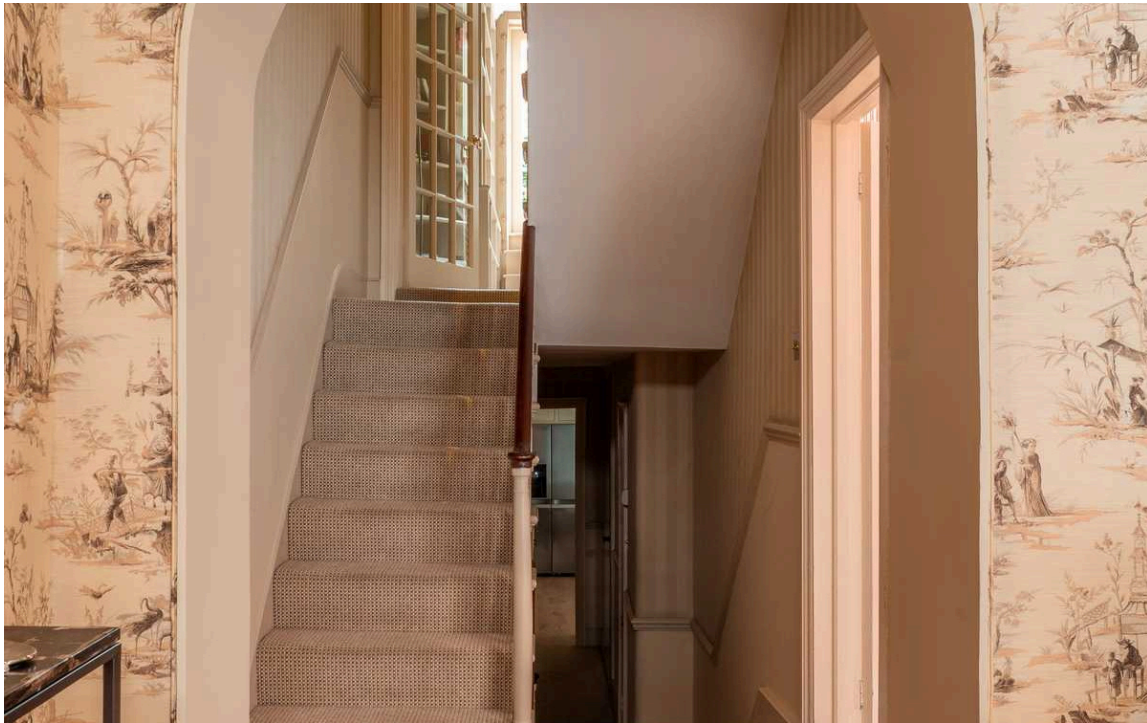
A stunning Grade II listed key house

EATON TERRACE
BELGRAVIA SW1W

Eaton Terrace

Sold

| | | | |
|----------------|-------------------------|----------------------|--------------------|
| BEDROOMS 5 | INTERNAL 2,629 SQ FT | OUTDOOR 381 SQ FT | COUNCIL TAX H |
| BATHROOMS 3 | 244 SQM | EPC D | TENURE Freehold |



The Property

Situated on the preferred western terrace of Eaton Terrace.

This elegant and beautifully presented house offers superb and well-balanced accommodation over five floors.





Indoor Spaces

Of particular note is the stunning original sitting room on the first floor with beautiful full height sash windows that fill the room with natural light. The ground floor contains a superb kitchen breakfast room complete with a sitting area benefitting from a pretty roof light.



The Bedrooms



The Neighbourhood

Eaton Terrace is in the sought-after neighbourhood of Belgravia

The property is within proximity to the plethora of shops, bars and restaurants that this vibrant area provides. Of note are Elizabeth Street and Pimlico Road with some of London's finest restaurants, interior design stores, useful convenience such as Baily & Sage, and the Daylesford Organic farm shop. In addition, the renowned shopping of Sloane Street, Pavilion Road, and the Kings Road are all within walking distance. The area is incredibly well served for public transport with Victoria Station a short distance away, providing direct links to Gatwick Airport, as well as the even closer Sloane Square Station.



Eaton Terrace, SW1

APPROX. GROSS INTERNAL AREA *
2629 Sq Ft - 244.23 Sq M

This floorplan is for GUIDANCE ONLY and NOT FOR VALUATION purposes.



Key:
CH - Ceiling Height



© Alex Winship Photography Ltd.

ALEX WINSHIP
Photography

* Floorplan for guidance only, not to scale or valuation purposes. It must not be relied upon as a statement of fact. All measurements and areas are approximate and have been prepared in accordance with the current edition of the RICS Code of Measuring Practice.

RICS Certified Property Measurer

**RUSSELL
SIMPSON**

Contact Us

+44 (0) 20 7225 0277

Contact us

info@russellsimpson.co.uk

Sydney Street

+44 (0) 20 7225 0277

151A Sydney Street

London

SW3 6NT

chelsea@russellsimpson.co.uk

Kensington Square

+44 (0) 20 3761 9691

13 Kensington Square

London

W8 5HD

kensington@russellsimpson.co.uk