

RUSSELL SIMPSON

Unique three-bedroom house with
exceptionally decorated interiors
moments away from the Portobello
Road

DENBIGH TERRACE
NOTTING HILL W11

Denbigh Terrace

£3,950,000

BEDROOMS 3	INTERNAL 1,643 SQ FT 152 SQM	OUTDOOR 416 SQ FT	COUNCIL TAX RBKC, G
BATHROOMS 2		EPC C	TENURE Freehold

The Property

Beautiful family home with light-filled living spaces on a colourful street in the heart of Notting Hill

Entering the house on the raised ground floor, the front door opens directly onto a generous reception room that runs the entire length of the property. As well as space for a study and seating area, a double-height south-facing glazed extension fills this space with light.



Indoor Spaces

Downstairs is a spacious kitchen with central island breakfast bar and sliding French doors that lead out into the garden. Thanks to an internal void, it shares the brightness from the glazed extension. This floor also features a dining room, a guest WC and separate street access via the front patio.



The Bedrooms

The first floor is entirely occupied by the principal bedroom suite, including a bedroom, a bathroom with a bath and corridor dressing room. There is a second bathroom on the half-landing, and two more bedrooms on the top floor.



The Design

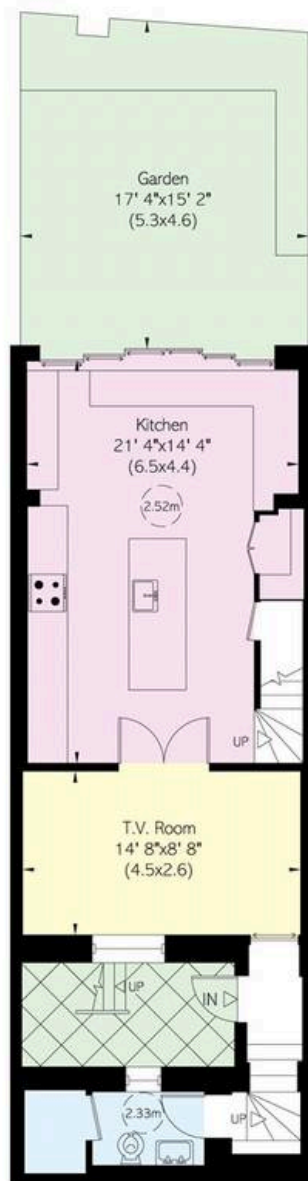
The property has been decorated in a unique style, that blends elegant wallpaper and colourful features. It is presented in excellent condition with underfloor heating throughout and air conditioning in the bedrooms. The result is an exceptionally playful, tasteful and comfortable home. It includes a paved south-facing garden.

[Discover how Denbigh Terrace was created.](#)

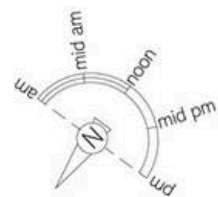


The Neighbourhood

Denbigh Terrace is a charming street off the Portobello Road lined with picturesque terrace houses painted pastel colours. From here, Notting Hill Gate underground station is a short walk away, while the neighbourhood's many restaurants and shops are also nearby. In addition, the open spaces of Kensington Gardens and Hyde Park are within easy reach.



Lower Ground Floor



Denbigh Terrace, W11

**RUSSELL
SIMPSON**

Approximate Internal Area

1,643 sq ft/ 153 sq m

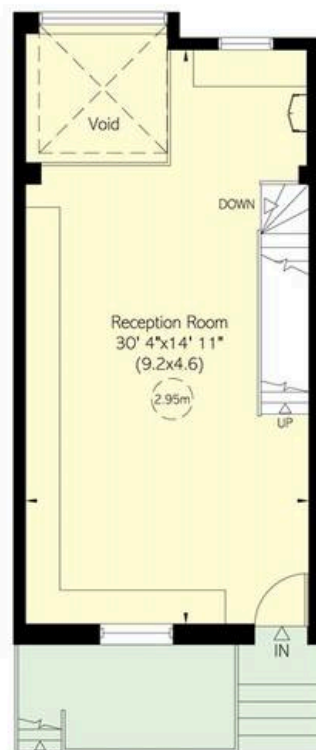
Including limited use area

27 sq ft/ 3 sq m

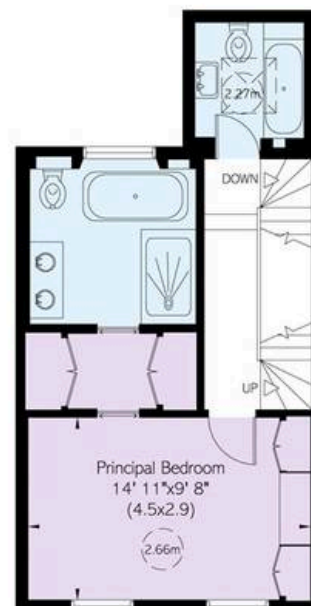
Outside Area

417 sq ft/ 39 sq m

This plan is for layout guidance only. Not drawn to scale unless stated. Windows and door openings are approximate. Whilst every care is taken in the preparation of this plan, please check all dimensions, shapes, and compass bearings before making any decisions reliant upon them.



Raised Ground Floor



First Floor



Second Floor

**RUSSELL
SIMPSON**

Contact Us

+44 (0) 20 3761 9691

13 Kensington Square
London
W8 5HD

kensington@russellsimpson.co.uk

In accordance with the Property Mis-Description Act 1991, the following details have been prepared in good faith, and are not intended to constitute part of an offer or contract. Any information contained herein (whether in the text, plans or photographs) is given in good faith but should not be relied upon as being a statement of representation of fact. Nothing in these Particulars shall be deemed to be a statement that the property is in good condition or otherwise nor that any services or facilities are in good working order. Any measurements of distances referred to herein are approximate only. October 2021