



## **RUSSELL SIMPSON**

Beautiful two-bedroom Chelsea flat  
with spectacular views of the  
Thames

DELAHAY HOUSE  
CHELSEA SW3

# Delahay House

£1,750,000

BEDROOMS 2	INTERNAL 958 SQ FT	OUTDOOR —	COUNCIL RBKC
BATHROOMS 2	89 SQM	EPC C	COUNCIL TAX G
TENURE Share of freehold	LEASE LENGTH 985 YEARS	GROUND RENT —	SERVICE CHARGE £6,724 P/Y



## The Property

Elegant flat with lofty interiors in a Grade II listed building beside historic Cheyne Walk

Entering the flat on the second floor, the entrance hall leads through to an impressive reception room. As well as high ceilings and a marble fireplace, this room has a broad bay window with impressive views over the Thames. The window faces south, filling the room with light and forming a beautiful dining area to complement the seating space beside the fireplace.



## Indoor Spaces

The flat has wooden floors throughout giving an added sense of sophistication.

Next door is a fitted kitchen, also with high ceilings and panelled units. Meanwhile, the other half of the flat contains a pair of bedrooms with inbuilt storage and pair of bathrooms. One of these bathrooms is ensuite, while the other contains a generous bathtub.

---

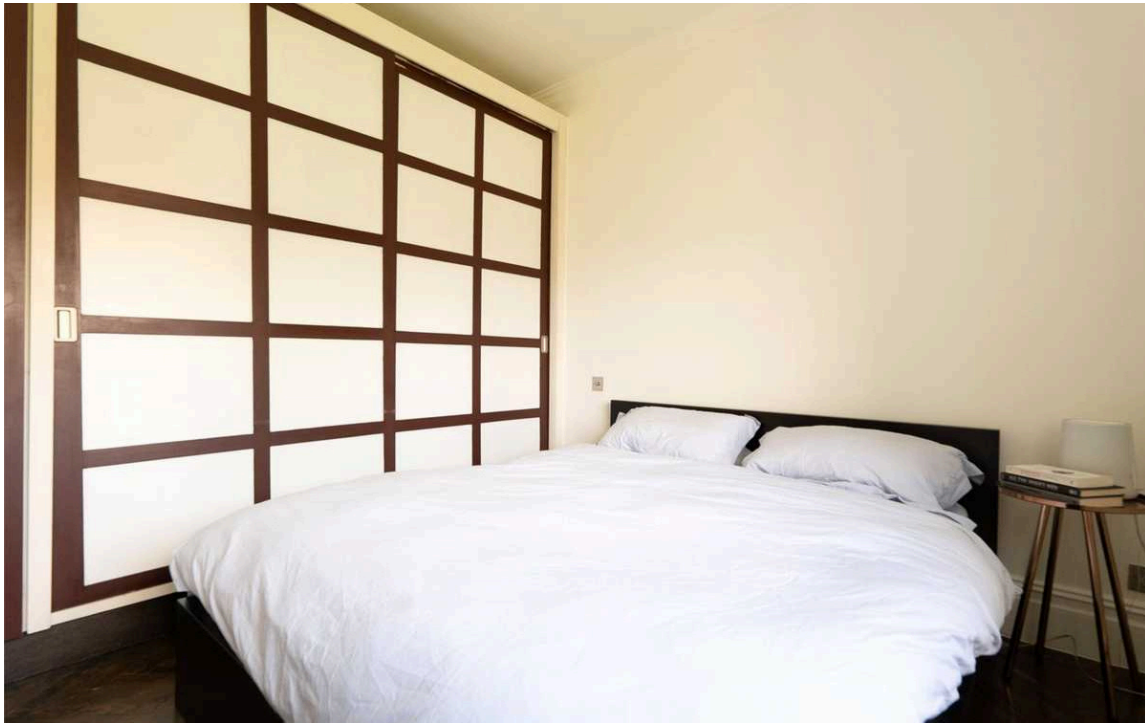
img 1

River Views

img 2

Kitchen





The Bedrooms





## The Neighbourhood

Delahay House was built in 1878 by Norman Shaw, one of the leading architects of the late Victorian Era. It was constructed from red brick with Venetian stylistic influences and is now Grade II listed. Inside, there is a lift connecting each floor.

Delahay House stands at the eastern end of Cheyne Walk, one of London's most historic addresses, which has been home to numerous writers, artists and international figures, including George Eliot and Dante Gabriel Rossetti. Today, the property is a short walk away from the King's Road, with its celebrated range of restaurants and shops. It is also positioned close to the private Chelsea Physic Garden, while the open spaces of Battersea Park are within easy reach.

**Delahay House,  
Chelsea Embankment, SW3**

Approximate gross internal area  
89.00 sq m / 958 sq ft



Key:  
CH - Ceiling Height



**Second Floor**

*Not to scale, for guidance only and must not be relied upon as a statement of fact.  
All measurements and areas are approximate only*

**RUSSELL  
SIMPSON**

---

## Contact Us

+44 (0) 20 7225 0277

Contact us

[info@russellsimpson.co.uk](mailto:info@russellsimpson.co.uk)

---

## Sydney Street

+44 (0) 20 7225 0277

151A Sydney Street

London

SW3 6NT

[chelsea@russellsimpson.co.uk](mailto:chelsea@russellsimpson.co.uk)

---

## Kensington Square

+44 (0) 20 3761 9691

13 Kensington Square

London

W8 5HD

[kensington@russellsimpson.co.uk](mailto:kensington@russellsimpson.co.uk)