

## **RUSSELL SIMPSON**

Attractive and convenient one-  
bedroom flat on a special mews near  
Gloucester Road station

DE VERE MEWS  
KENSINGTON W8

De Vere Mews

£795,000

BEDROOMS 1	INTERNAL 697 SQ FT	OUTDOOR —	COUNCIL RBKC
BATHROOMS 1	64 SQM	EPC D	COUNCIL TAX E
TENURE Leasehold	LEASE LENGTH —	GROUND RENT —	SERVICE CHARGE £3,330 P/Y

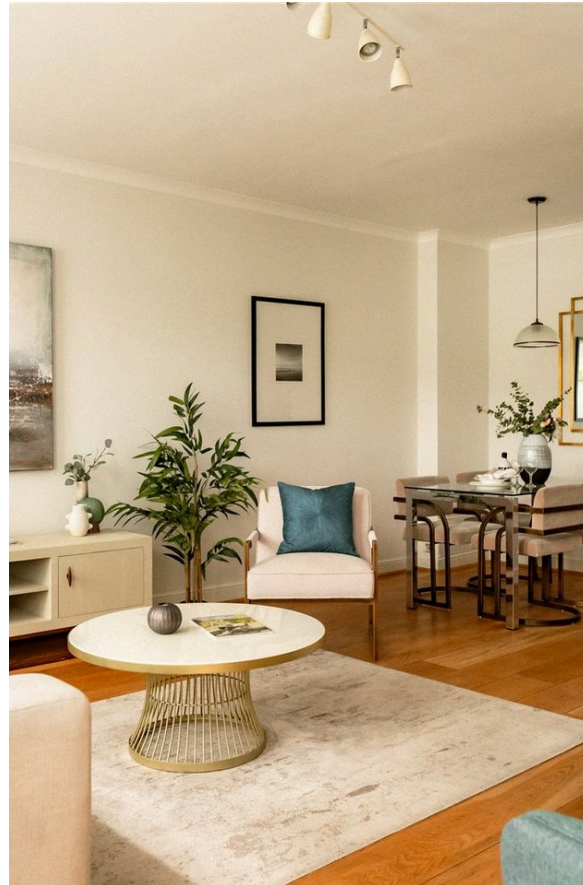


## The Property

Well-proportioned flat in a unique gated mews close to Kensington Gardens and Hyde Park

## Indoor Spaces

Stepping into the flat on the first floor, the front hall opens onto a generous reception room. This includes inbuilt storage, enough space for separate dining and seating areas, and an open-plan kitchen. Meanwhile, three window bays bring in plenty of light.





## The Bedroom

On the other side of the flat is a bedroom, a bathroom with a bath, a guest WC and further storage space.





## The Design

The flat is decorated in a tasteful style, with wooden floors creating a sense of elegance throughout, while glass-panelled doors add to the brightness and space. It is presented in good condition.



## The Neighbourhood

De Vere Mews is a private, gated mews with a paved central garden and balconies lining the internal courtyard.

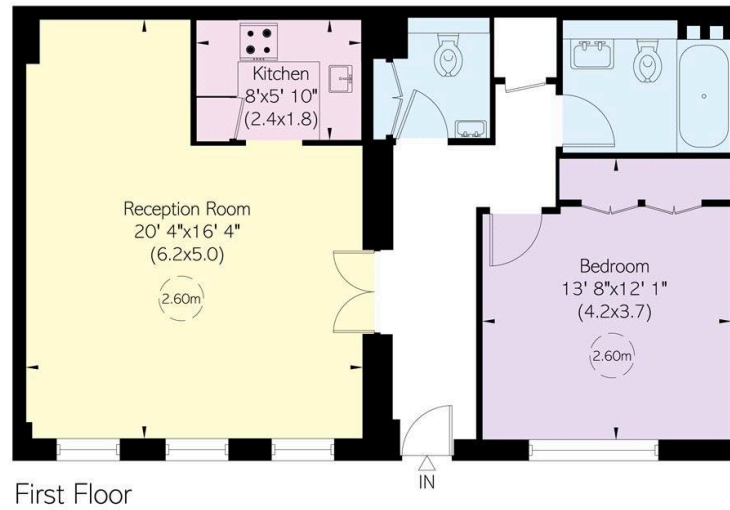
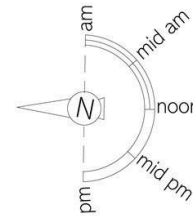
De Vere Mews runs off Canning Place, a quiet street leading between Gloucester Road and St Albans Grove. From here, Gloucester Road underground station is close, while the open spaces of Hyde Park and Kensington Gardens are within walking distance. The restaurants and independent shops of Victoria Grove are also nearby, creating a village-like atmosphere.

# De Vere Mews, W8

**RUSSELL  
SIMPSON**

**Approximate Internal Area**  
697 sq ft/ 65 sq m

This plan is for layout guidance only. Not drawn to scale unless stated. Windows and door openings are approximate. Whilst every care is taken in the preparation of this plan, please check all dimensions, shapes, and compass bearings before making any decisions reliant upon them.





**RUSSELL  
SIMPSON**

---

## Contact Us

+44 (0) 20 7225 0277

Contact us

[info@russellsimpson.co.uk](mailto:info@russellsimpson.co.uk)

---

## Sydney Street

+44 (0) 20 7225 0277

151A Sydney Street

London

SW3 6NT

[chelsea@russellsimpson.co.uk](mailto:chelsea@russellsimpson.co.uk)

---

## Kensington Square

+44 (0) 20 3761 9691

13 Kensington Square

London

W8 5HD

[kensington@russellsimpson.co.uk](mailto:kensington@russellsimpson.co.uk)