



## **RUSSELL SIMPSON**

Wide three-bedroom house with off-  
street parking in a beautiful mews

CLOVER MEWS  
CHELSEA SW3

# Clover Mews

£3,950,000

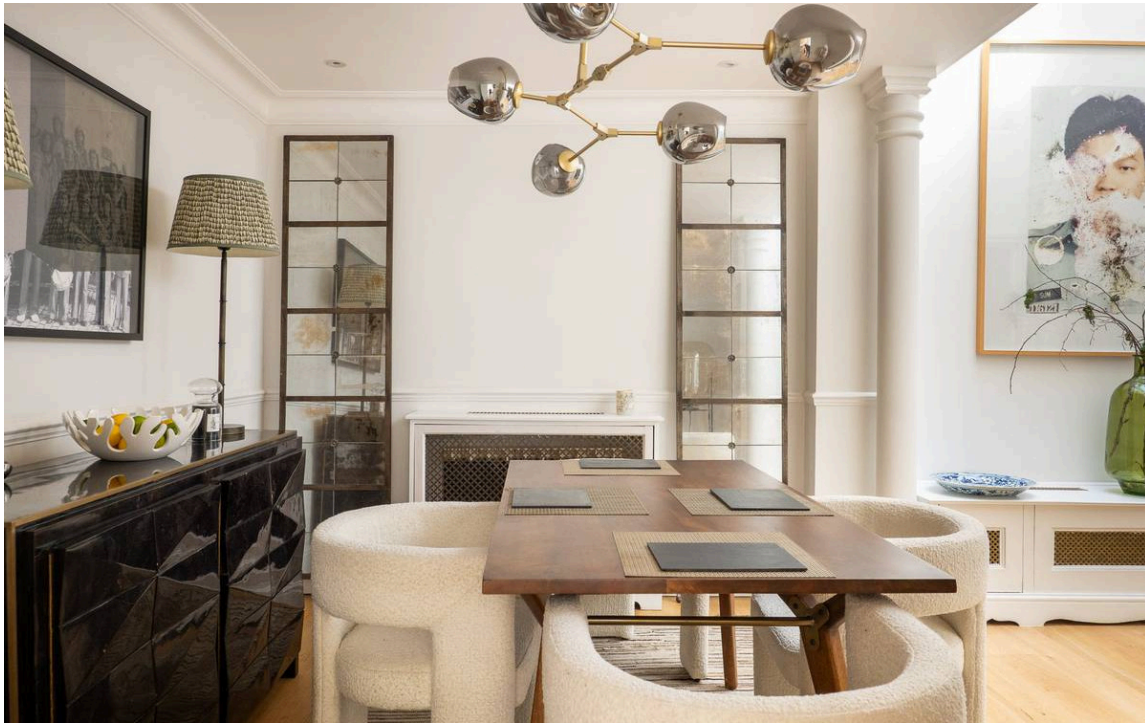
BEDROOMS 3	INTERNAL 1,913 SQ FT	OUTDOOR 732 SQ FT	COUNCIL TAX RBKC, H
BATHROOMS 3	177 SQM	EPC D	TENURE Freehold

# The Property

Bright and spacious mews house in the heart of Old Chelsea and moments away from the Chelsea Physic Garden







## Indoor Spaces

Entering the house on the ground floor, the front hall leads through to a generous reception room with enough space for separate dining and seating areas. An overhead skylight fills this room with light, while the wooden floor and moulded columns add a sense of elegance. A door leads through to the fitted kitchen with a wide west-facing window. This floor also contains a guest WC.





## The Bedrooms

On the first floor is a principal bedroom with considerable storage space and an ensuite bathroom containing a shower and bath. There is also a reception room with high ceilings and French doors on both sides, one opening onto a Juliet balcony, the other onto a terrace.

The second floor contains two more bedrooms, one of them with an ensuite bathroom, the other with a bathroom opposite, and both with additional storage space.





## The Neighbourhood



The house includes a rear balcony with wooden decking and enough space for outdoor seating. It also offers a garage with off-street parking.

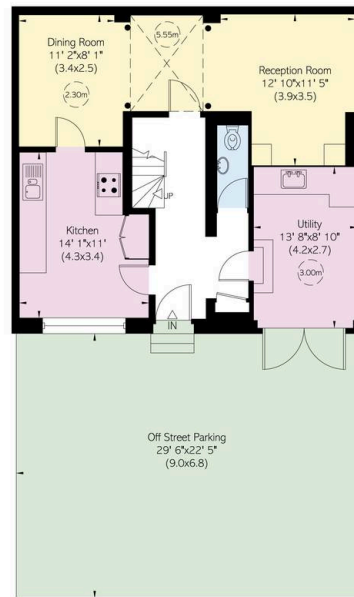
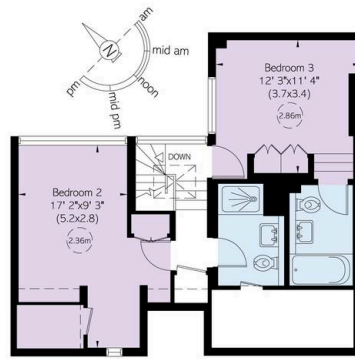
Clover Mews is a beautiful cobbled mews in the heart of old Chelsea. Running north from the pastel-painted houses of Dilke Street, it is lined with red brick houses on one side and planted borders on the other. This property lies at the end of the mews, with a gabled facade and white dressings for the lower storey. From here, the many restaurants and shops of the Kings' Road are within easy reach, as well as the beautiful grounds of the Chelsea Physic Garden. Albert Bridge is also a short walk away, leading to the open spaces of Battersea Park. In addition, residents have the right to apply to the impressive sports facilities of nearby Burton Court.

# Clover Mews, SW3

**RUSSELL  
SIMPSON**

**Approximate Internal Area**  
1,913 sq ft / 178 sq m  
**Including limited use area**  
95 sq ft / 9 sq m  
**Outside Area**  
733 sq ft / 68 sq m

This plan is for layout guidance only. Not drawn to scale unless stated. Window and door openings are approximate. While every care is taken in the preparation of this plan, please check all dimensions, shapes, and compass bearings before making any decisions reliant upon them.



**RUSSELL  
SIMPSON**

---

## Contact Us

+44 (0) 20 7225 0277

Contact us

[info@russellsimpson.co.uk](mailto:info@russellsimpson.co.uk)

---

## Sydney Street

+44 (0) 20 7225 0277

151A Sydney Street

London

SW3 6NT

[chelsea@russellsimpson.co.uk](mailto:chelsea@russellsimpson.co.uk)

---

## Kensington Square

+44 (0) 20 3761 9691

13 Kensington Square

London

W8 5HD

[kensington@russellsimpson.co.uk](mailto:kensington@russellsimpson.co.uk)