



RUSSELL SIMPSON

Unique and spectacular eight-bedroom Grade I listed Georgian mansion overlooking the River Thames

WALPOLE HOUSE
CHISWICK W4

Walpole House

£12,000,000

BEDROOMS 8	INTERNAL 9,118 SQ FT	OUTDOOR 26,997 SQ FT	COUNCIL TAX Hounslow, H
BATHROOMS 6	847 SQM	EPC D	TENURE Freehold



The Property

Magnificent and historic house in Chiswick with grand and lateral proportions, a landscaped garden and off-street parking





Indoor Spaces

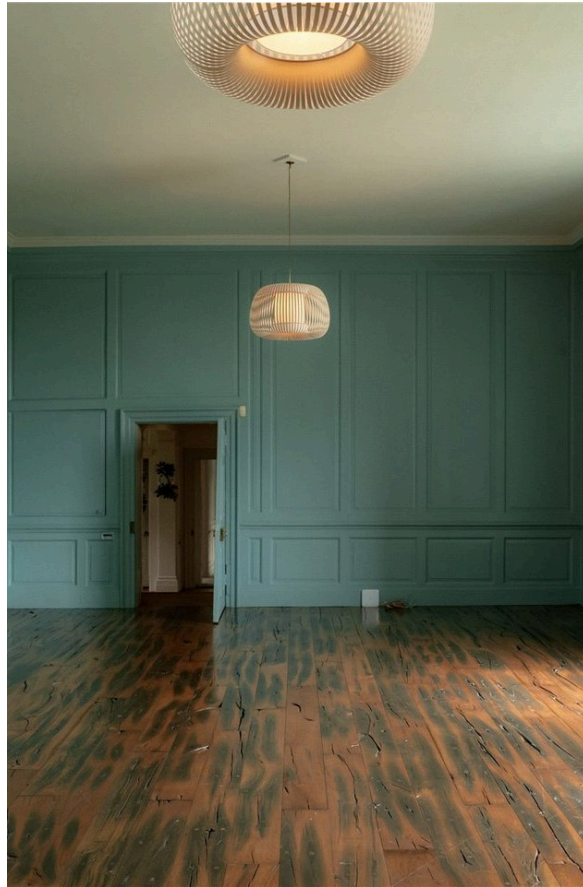
Stepping into the house on the ground floor, the entrance leads through to an impressive staircase hall. Surrounding the hall there is a spacious front reception room, a modern fitted kitchen with a central island, a breakfast room with separate street access and a dining room overlooking the rear garden.

The lower ground floor contains a well-proportioned service kitchen and extensive utility area. In addition, this floor has a gym, a steam room and a cellar with extensive storage space.



Drawing Room

The first floor centres on a grand drawing room with ballroom proportions and exceptionally high ceilings, with sensational views to the front and rear.





The Bedrooms

The first floor contains a principal bedroom suite, consisting of a bedroom with views down the Thames, a generous dressing room, an ensuite bathroom and a shower room.

Furthermore, this floor features an additional ensuite bedroom and a study with garden views. The second floor offers six bedrooms and three bathrooms, two of them ensuite. This floor also includes a reception room that could become a seventh bedroom and another kitchen. Finally, there is a loft with considerable storage space.



The Design

The house's ground and first floor have lofty Georgian proportions, including large sash windows that fill the living spaces with light. At the same time, the property has been extensively renovated by the present owner, with interiors that sensitively enhance the building's unique history. This blend of traditional and contemporary details result in elegant and comfortable rooms throughout.

[Click here for a conversation with architect Peregrine Bryant.](#)





Outdoor Spaces

The property includes an exceptionally generous and private L-shaped rear garden measuring 0.5 acres (0.2 hectares). This includes expansive lawns, mature trees, a pond, a greenhouse, a tool shed, and off-street parking. There is also a front-garden alongside the Thames.

[Read more about the incredible garden here.](#)





The Neighbourhood

Walpole House is the largest and finest mansion on Chiswick Mall. The core of the property is Tudor, with features from the sixteenth and seventeenth century, while the river frontage dates back to 1730. The house is Grade I listed and the wrought-iron front gate is Grade II* listed. In its long history, Walpole House has been occupied by numerous celebrated figures. These include Barbara Villiers, mistress of King Charles II; the MP and banker Thomas Walpole; the sculptor John Issac Thornycroft; the actor Herbert Beerbohm Tree; and more recently the designer Jasper Conran. Chiswick Mall is a beautiful and historic street running alongside the Thames.

It is lined by impressive Georgian and Victorian properties, many with gardens on the other side of the road overlooking the river and the Chiswick Eyot. The Mall forms the centrepiece of the Old Chiswick conservation area and has been painted by artists such as Pissarro, as well as used in films like *Howards End*.

**Walpole House,
Chiswick Mall, W4**

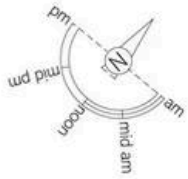
Approximate Internal Area
3481 sq ft / 323 sq m

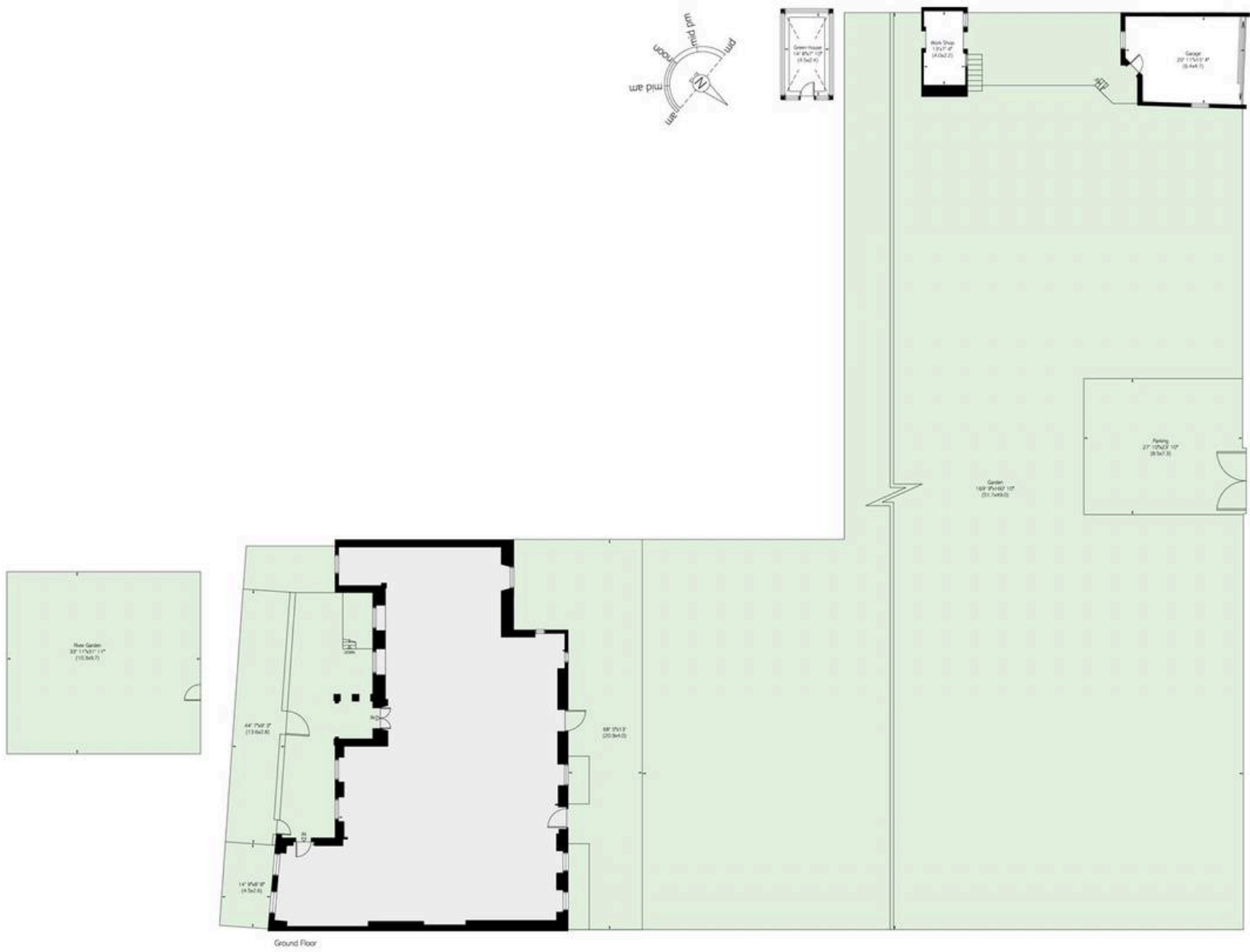
**Excluding Loft, Green House,
Garage and Work Shop**
3221 sq ft / 304 sq m

Outside Area
46,997 sq ft / 4,368 sq m

**RUSSELL
SIMPSON**

This plan is for general guidance only. Not drawn to scale unless stated. Dimensions and door openings are approximate. We take every care to make it as accurate as possible. In the preparation of this plan, please check all dimensions, shapes and complete bearings before making any decisions about your plans.





**RUSSELL
SIMPSON**

Contact Us

+44 (0) 20 3761 9691

13 Kensington Square
London
W8 5HD

kensington@russellsimpson.co.uk