

RUSSELL SIMPSON

Unique five bedroom Chelsea house
with garden studio and parking

CHEYNE WALK
CHELSEA SW3

Cheyne Walk

Sold

BEDROOMS 5	INTERNAL 4,867 SQ FT	OUTDOOR 1,310 SQ FT	COUNCIL TAX H
BATHROOMS 5	452 SQM	EPC E	TENURE Freehold



The Property

Grade II listed family home on a historic Chelsea street with charming interiors and Thames views.

img 1

Studio Room

img 2

Kitchen





Indoor Spaces

Entering the house on the ground floor, the front hall leads through to a generous dining room. One side of the room communicates with the galley kitchen, while on the other side a French door opens onto the garden. This floor also includes a pantry and a guest loo.





Studio Space

The first floor contains a magnificent studio or drawing room with double-height ceilings and a high bank of windows looking out over the garden. This room communicates with a library at the front of the house with built-in wooden shelves.

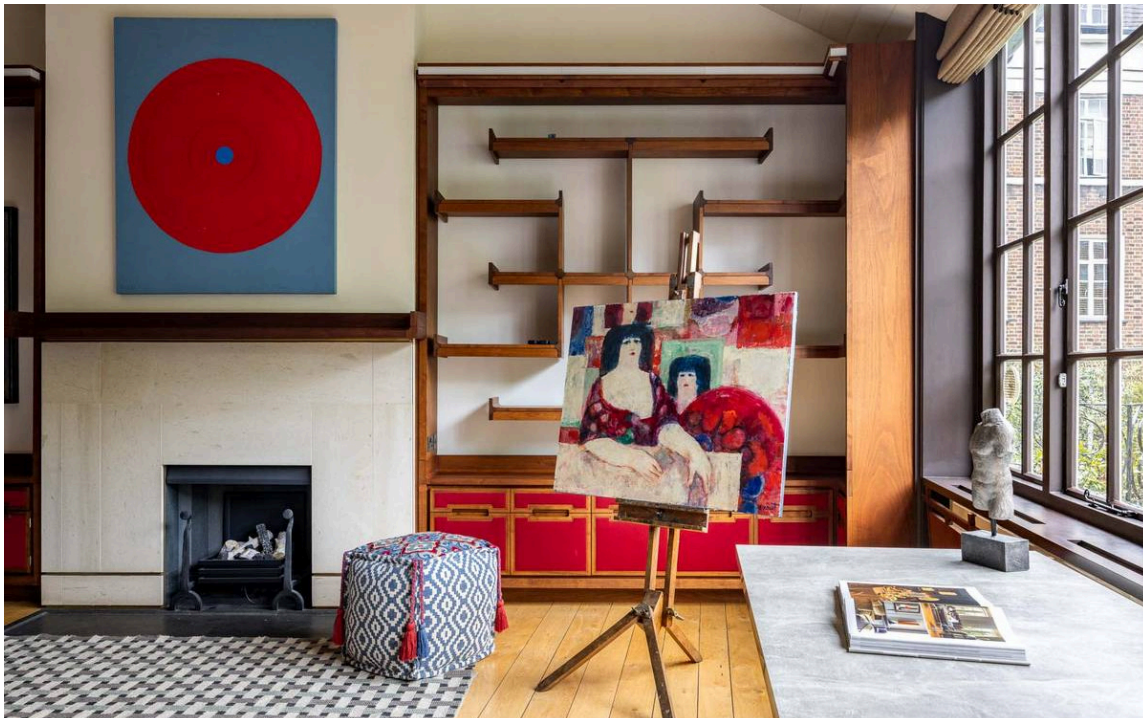
The property includes a second, smaller house at the far of the garden. This contains a studio drawing room, a kitchen and a utility room, a guest loo and a double bedroom with ensuite bathroom.

img 1

Artist Studio

img 2

Artist Studio





The Bedrooms

The second floor contains a bedroom with next-door bathroom. Meanwhile, on the third floor, there is a generous principal bedroom with garden views, as well as a second bedroom or dressing room, and a bathroom. Finally, the fourth floor is entirely occupied by a guest bedroom with a walk-in wardrobe and a spacious bathroom with shower and bathtub.





Outdoor Spaces

The property includes a large garden with a tiled area for outdoor dining and a lawn rising towards the studio cottage at the rear. It also includes a leasehold garage and vaults for additional storage. Meanwhile, the front of the property is sheltered from the road by a narrow strip of parkland.

History

The house was built in the late Victorian era by the celebrated Arts and Crafts architect C.R. Ashbee. Originally used as artists' studios, the rooms evoke this historic character with exposed beams and bespoke joinery. At the same time, the house is in good condition, blending the traditional and the contemporary to create a characterful interior. Finally, the south-facing rooms at the front of the house enjoy views over the River Thames and the Albert Bridge.

The Neighbourhood

Cheyne Walk is one of the most historic streets in London. Over the nineteenth and twentieth centuries it has been home to numerous celebrated figures, including the writers George Eliot and Bertrand Russell, the painters Dante Gabriel Rossetti and J.M.W. Turner, the actress Elizabeth Taylor and the politician David Lloyd George.

Today, the house is exceptionally well positioned. To the south is the Thames Embankment, with the Albert Bridge leading to Battersea Park. To the north is the King's Road, with its excellent range of restaurants and shops. In addition, the beautiful Chelsea Physic Garden is just a short walk away.



img 1

Exterior

img 2

Details

CHEYNE WALK SW3

THE HOUSE
APPROX. GROSS INTERNAL AREA *
3670 Ft² - 340.94 M²

THE COTTAGE
APPROX. GROSS INTERNAL AREA *
1161 Ft² - 107.86 M²

HOUSE & COTTAGE
4831 Ft² - 448.80 M²

Illustration For Identification Only, Not to Scale
All Calculations include Any/All Areas Under 1.5m Head Height.
*As Defined by BS-5: Code of Measuring Practice



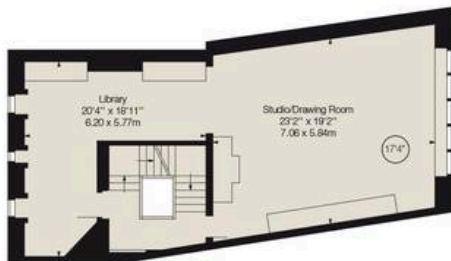
FOURTH FLOOR



SECOND FLOOR



THIRD FLOOR



FIRST FLOOR



Studio Cottage



GROUND FLOOR

**RUSSELL
SIMPSON**

Contact Us

+44 (0) 20 7225 0277

Contact us

info@russellsimpson.co.uk

Sydney Street

+44 (0) 20 7225 0277

151A Sydney Street
London
SW3 6NT

chelsea@russellsimpson.co.uk

Kensington Square

+44 (0) 20 3761 9691

13 Kensington Square
London
W8 5HD

kensington@russellsimpson.co.uk