



RUSSELL SIMPSON

Magnificent eight-bedroom mansion
with immaculate interiors next to
Chelsea Physic Garden

CHEYNE PLACE
CHELSEA SW3

Cheyne Place

£8,950,000

BEDROOMS 8	INTERNAL 4,017 SQ FT	OUTDOOR 839 SQ FT	COUNCIL TAX RBKC, H
BATHROOMS 6	373 SQM	EPC E	TENURE Freehold



The Property

Exceptionally wide and spacious house on a prestigious street close to the River Thames



img 1

Entrance Hall



img 2

Dining Room



Indoor Spaces

Entering the house on the ground floor, the front hall flows through to a well-proportioned reception room with a high ceiling and a working fireplace. On the opposite side of the hall is a dining room with a double aspect and ornate overhead lights. The fitted kitchen opposite has an informal dining area and a French door leading out onto a patio. This floor also includes a bedroom with an ensuite bathroom and a guest WC.

img 1

Drawing Room

img 2

Kitchen





The Principal Bedroom

The first floor offers a principal bedroom with a generous ensuite bathroom and a dressing room.

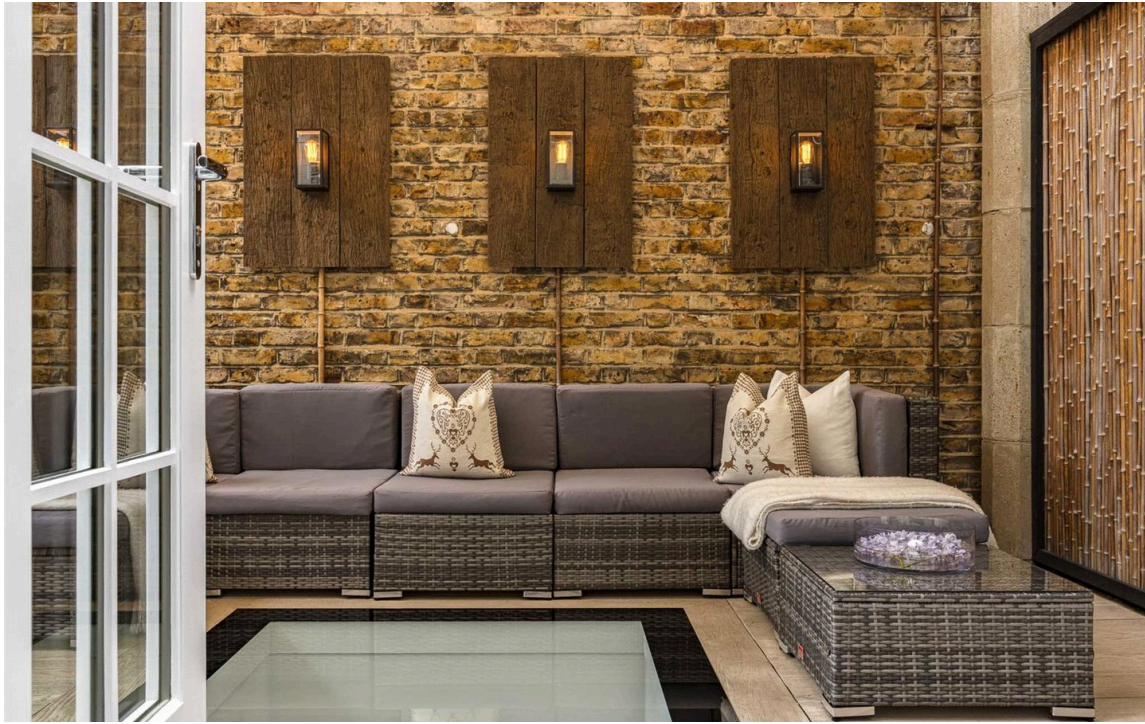




The Bedrooms

There is one more ensuite bedroom on the first floor, as well as a home office with a French door opening onto the terrace. The second floor features five more bedrooms and three bathrooms, one of them ensuite, the other two shared.

There is also a basement floor with a utility room and considerable storage space. Finally, several parts of the house feature air conditioning and underfloor heating.



Outdoor Spaces

The property includes a first-floor terrace with wooden decking and enough space for outdoor seating. In addition, the ground-floor patio has separate street access, while a front garden gives added privacy.

The Design

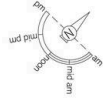
This wide and low-built neoclassical mansion was constructed in the 1930s. Decorated in a sophisticated contemporary style, its elegant interiors are presented in immaculate condition.





The Neighbourhood

Cheyne Place leads off the eastern end of Cheyne Walk, one of the most historic streets in London. Over the nineteenth and twentieth centuries, this street was home to numerous celebrated figures, including the writer George Eliot, the painter J.M.W. Turner, and the actress Elizabeth Taylor. To the south is the Thames Embankment, with the Albert Bridge leading to Battersea Park. To the north is the King's Road and its excellent range of restaurants and shops. In addition, the beautiful Chelsea Physic Garden lies next to the property.



Cheyne Place, SW3
Approximate Gross Internal Area
 4,017 sq ft / 373 sq m

**RUSSELL
 SIMPSON**

Including Framed Area
 7 sq ft / 1 sq m
Outside Area
 839 sq ft / 78 sq m

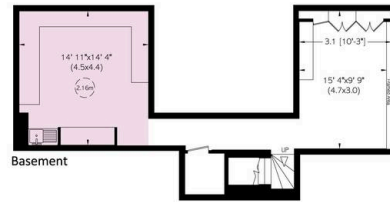
This plan is for layout guidance only. Not drawn to scale unless stated. Windows and door openings are approximate. Whilst every care is taken in the preparation of this plan, please check all dimensions, shapes, and compass bearings before making any decisions reliant upon them.



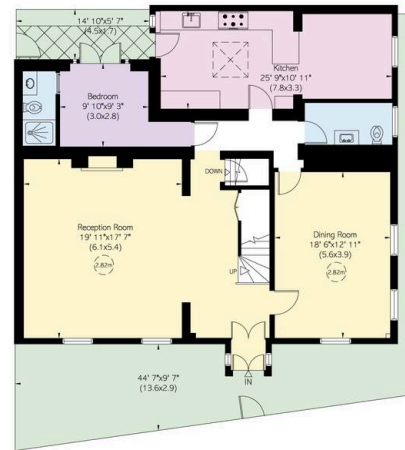
First Floor



Second Floor



Basement



Ground Floor

**RUSSELL
SIMPSON**

Contact Us

+44 (0) 20 7225 0277

Contact us

info@russellsimpson.co.uk

Sydney Street

+44 (0) 20 7225 0277

151A Sydney Street
London
SW3 6NT

chelsea@russellsimpson.co.uk

Kensington Square

+44 (0) 20 3761 9691

13 Kensington Square
London
W8 5HD

kensington@russellsimpson.co.uk