



**RUSSELL
SIMPSON**

Exceptionally wide eight bedroom
house with immaculate interiors on
a sought-after Chelsea street

CHEYNE GARDENS
CHELSEA SW3

Cheyne Gardens

£19,850,000

BEDROOMS 8	INTERNAL 7,105 SQ FT	OUTDOOR 1,536 SQ FT	COUNCIL TAX RBKC, H
BATHROOMS 7	660 SQM	EPC D	TENURE Freehold



The Property

Impressive family home with elegant design and lateral layout in a historic neighbourhood near the Thames.



Indoor Spaces

Entering the house on the ground floor, the front hall opens onto a generous dining room with high ceilings and panelled walls. This leads through to a fitted kitchen with a central island, marble worktops and a breakfast area. Furthermore, this floor contains an informal sitting room with an overhead skylight and three double French doors opening onto the garden.





Drawing Room

The first floor is entirely occupied by an impressive drawing room. The wide lateral layout includes four double French doors opening onto the wide front balcony. In addition, the garden-facing windows and rear balcony bring in added brightness, while a central fireplace separates this space into two distinct rooms.

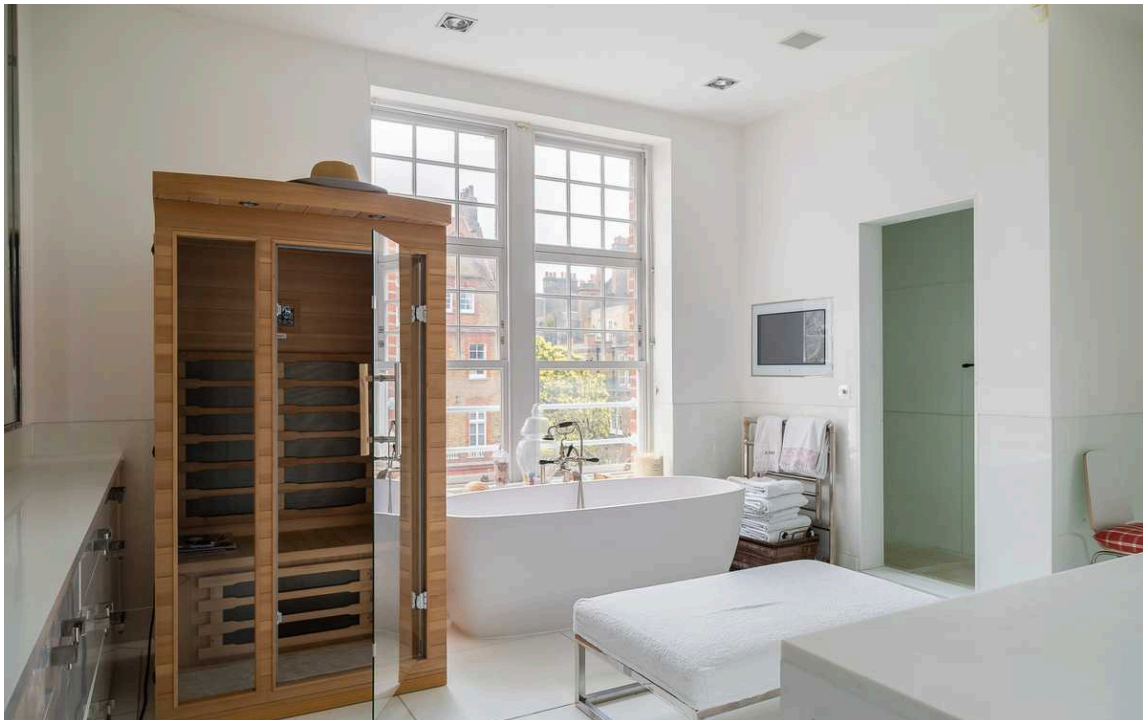




The Bedrooms

The lower ground floor provides an ensuite bedroom, as well as a staff suite with bedroom, reception room, bathroom, kitchenette and separate street access. In addition, this floor features a playroom, a utility room and considerable storage space. There is also a basement with further storage. The second floor contains a well-proportioned principal bedroom suite with a pair of bathrooms, a dressing room lined in wardrobe space, and an elegant bedroom with three sash-windows.

The third and fourth floors both offer a pair of bedrooms sharing an ensuite bathroom. In addition, there is a home office on one half-landing, and a second dressing room on the other. Finally, one of the top-floor bedrooms has access to a roof terrace.





The Design

The house consists of two adjacent properties, offering exceptional width between the lower ground and second floor. It has been recently refurbished and decorated in a tasteful fashion, with air conditioning in several rooms. The result is a spectacular family home in immaculate condition.

The images are from when the house was previously furnished.



The Neighbourhood & Outdoor Spaces

The property includes a west-facing rear garden with considerable outdoor storage space. Furthermore, the two rear terraces have attractive views over the neighbouring gardens.

Cheyne Gardens is a quiet street lined with red-brick Victorian houses, close to the historic properties of Cheyne Walk. Over the nineteenth and twentieth centuries, this street was home to numerous celebrated figures, including the writer George Eliot, the painter J.M.W. Turner, and the actress Elizabeth Taylor.

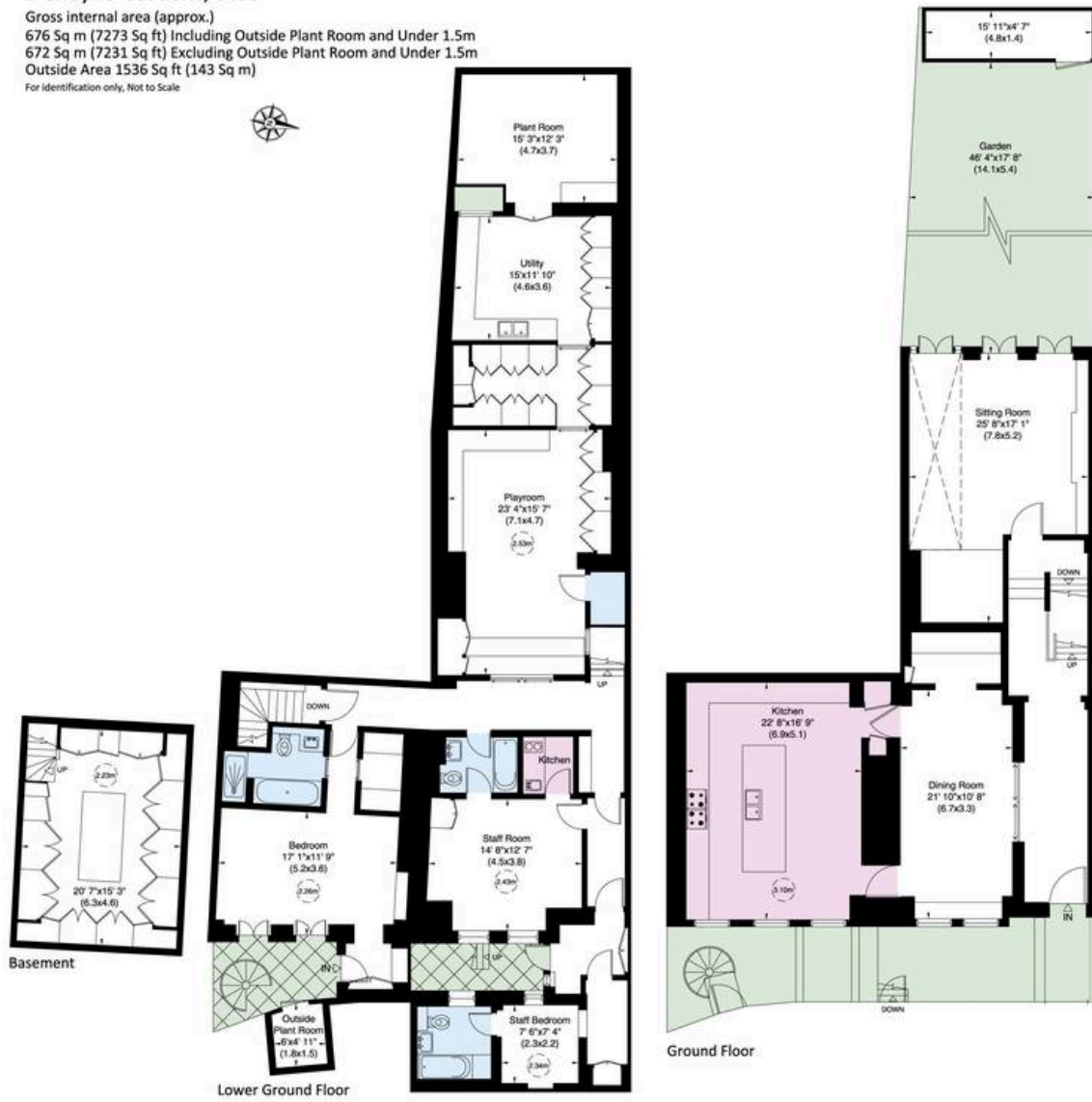
Both Albert Bridge and the Chelsea Embankment are a short distance away, while the beautiful private grounds of the Chelsea Physic Garden and the open spaces of Battersea Park are within each

reach. Finally, the celebrated shops and restaurants of the King's Road are nearby, as well as the charming streets that make up the Chelsea village.

1 Cheyne Gardens, SW3

Gross internal area (approx.)
 676 Sq m (7273 Sq ft) Including Outside Plant Room and Under 1.5m
 672 Sq m (7231 Sq ft) Excluding Outside Plant Room and Under 1.5m
 Outside Area 1536 Sq ft (143 Sq m)

For identification only, Not to Scale



Not to scale, for guidance only and must not be relied upon as a statement of fact. All measurements and areas are approximate only (and have been prepared in accordance with the current edition of the RICS Code of Measuring Practice).



**RUSSELL
SIMPSON**

Contact Us

+44 (0) 20 7225 0277

Contact us

info@russellsimpson.co.uk

Sydney Street

+44 (0) 20 7225 0277

151A Sydney Street
London
SW3 6NT

chelsea@russellsimpson.co.uk

Kensington Square

+44 (0) 20 3761 9691

13 Kensington Square
London
W8 5HD

kensington@russellsimpson.co.uk