



RUSSELL SIMPSON

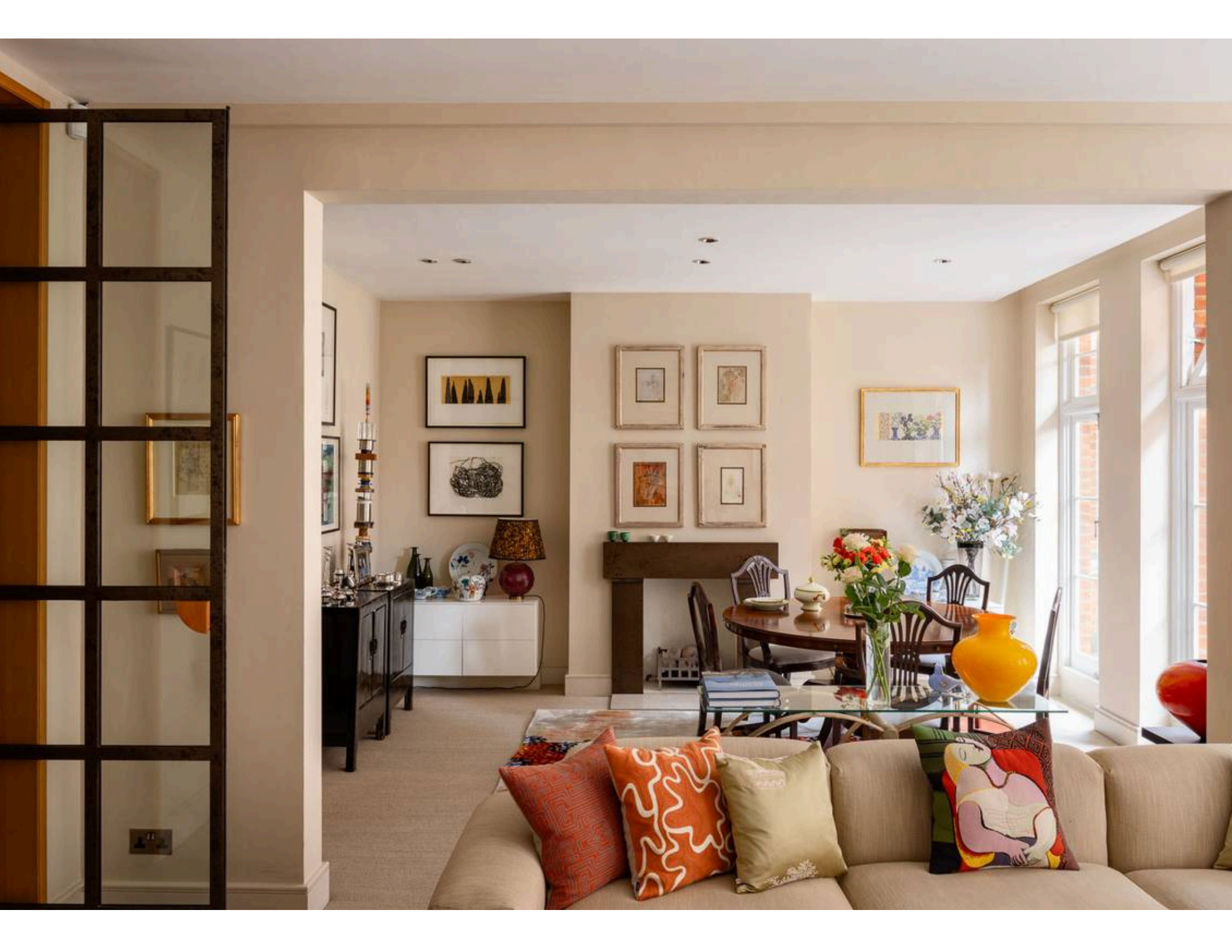
Elegant two-three bedroom flat, with
a balcony in the heart of Chelsea

CHEYNE COURT
CHELSEA SW3

Cheyne Court

Sold

BEDROOMS 3	INTERNAL 1,549 SQ FT	OUTDOOR 39 SQ FT	COUNCIL RBKC
BATHROOMS 2	143 SQM	EPC C	COUNCIL TAX G
TENURE Share of freehold	LEASE LENGTH 988 YEARS	GROUND RENT —	SERVICE CHARGE £10,940 P/Y



The Property

Large lateral flat in a beautiful Victorian mansion block with porter and lift





Indoor Spaces

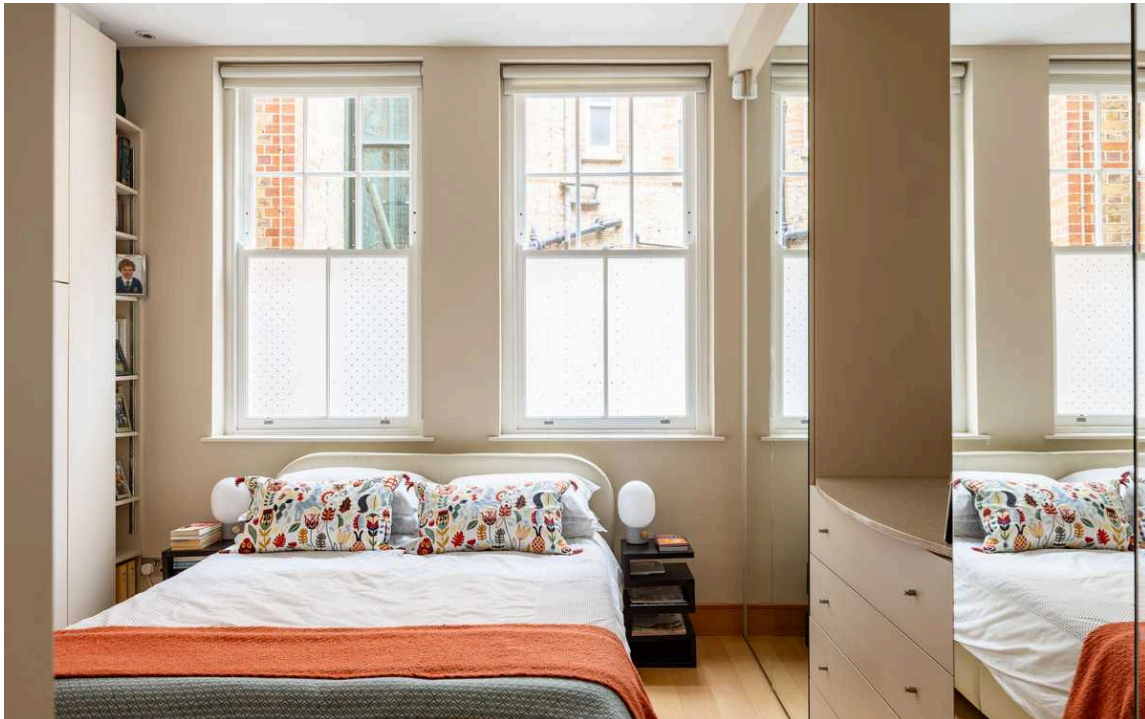
Entering the flat on the first floor, the front hall opens into a generous reception room, with a seating area on one side, a dining area on the other, and double French doors opening out onto a balcony.

Opposite the reception room is a fitted kitchen with an informal eating area. The kitchen leads into a study, formerly a third bedroom.



The Bedrooms

The principal suite has inbuilt storage and a marble tiled bathroom. In addition, there is a second bedroom suite with a spacious bathroom, including a bath. Both suites are separated from the hallway by double, floor to ceiling, doors.



The Design

The tasteful design of the flat mixes contemporary and classic details, while the interiors are presented in good condition.



Outdoor Spaces

The property includes a balcony with views over the tranquil and well-maintained courtyard. The building also benefits from a lift.



The Neighbourhood

Cheyne Court is a red-brick mansion block from the Victorian era, with portered gates providing a high level of security. It is located close to Cheyne Row, perhaps the most historic street in London. To the south is the Thames Embankment, with the Albert Bridge leading to Battersea Park. To the north is the King's Road, with its excellent range of restaurants and shops. The Chelsea Physic Garden is opposite, while the sporting facilities of Burton Court are close by.

Cheyne Court, Royal Hospital Road, SW3

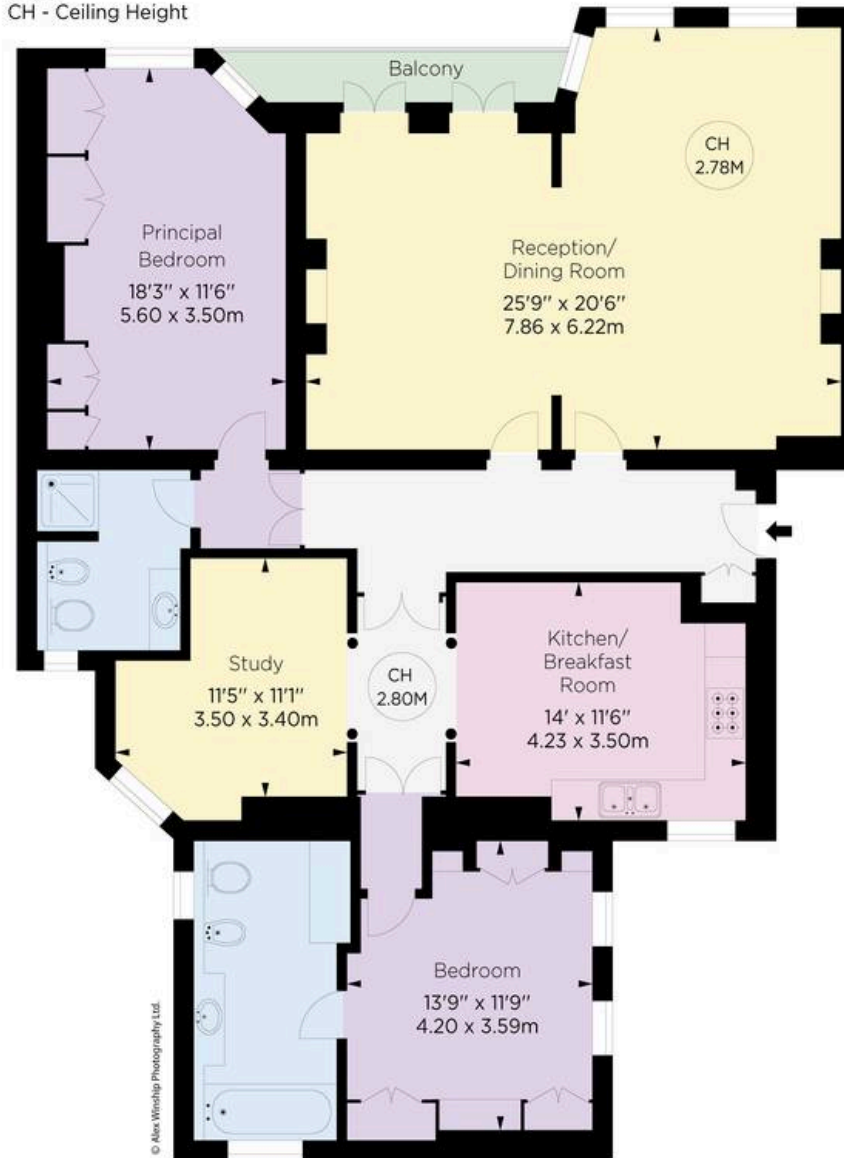
Approximate Gross Internal area
1549 sq ft / 143.90 sq m

Approximate outdoor area
40 sq ft / 3.77 sq m

RUSSELL SIMPSON

This plan is for layout guidance only.
Not drawn to scale unless stated. Windows
and door openings are approximate. Whilst
every care is taken in the preparation of this
plan, please check all dimensions, shapes,
and compass bearings before making any
decisions reliant upon them.

Key :
CH - Ceiling Height



FIRST FLOOR

**ALEX
WINSHIP**
Photography

*For more information on our services, please visit our website at www.alexwinship.com. We are a member of the Royal Institution of Chartered Surveyors (RICS) and are fully insured and regulated by the Financial Conduct Authority (FCA). We are also a member of the National Association of Property Photographers (NAPP).

MIP **RICS** **Chartered Property Photographer**

**RUSSELL
SIMPSON**

Contact Us

+44 (0) 20 7225 0277

Contact us

info@russellsimpson.co.uk

Sydney Street

+44 (0) 20 7225 0277

151A Sydney Street
London
SW3 6NT

chelsea@russellsimpson.co.uk

Kensington Square

+44 (0) 20 3761 9691

13 Kensington Square
London
W8 5HD

kensington@russellsimpson.co.uk