



## **RUSSELL SIMPSON**

Exceptionally wide three bedroom family home with expansive views, garage and off-street parking for two cars

CAMPDEN HILL SQUARE  
KENSINGTON W8

# Campden Hill Square

Sold

BEDROOMS 3	INTERNAL  2,939 SQ FT  273 SQM	OUTDOOR 2,407 SQ FT	COUNCIL TAX RBKC, H
BATHROOMS 2		EPC E	TENURE Freehold



## The Property

Spacious house with opulent interiors and superb south-facing garden on a prestigious and historic square

Stepping into the house on the ground floor, the foyer opens onto a large and attractive front hall. Beyond is a kitchen with a utility cupboard, a dining area and south-facing double French doors that open onto the garden. This floor also features a guest WC and a garage, and unlike many properties in the neighbourhood, has no square footage below ground.

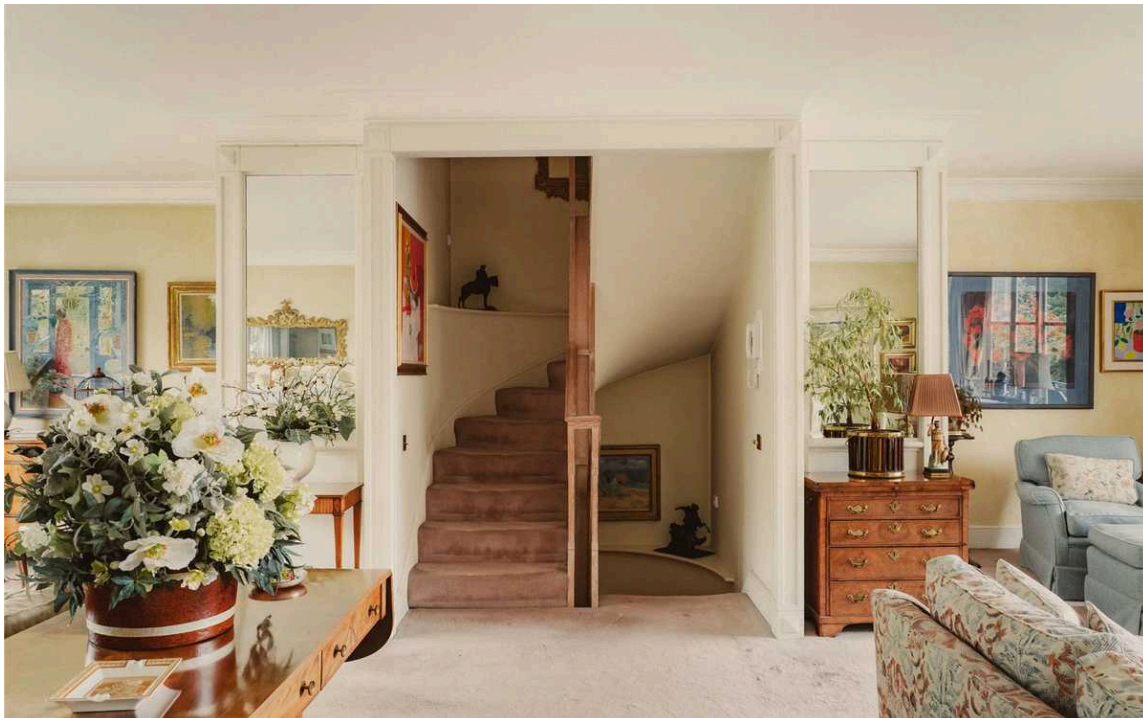
The first floor is entirely occupied by a generous double reception room. Wide windows at the front and rear fill this space with light, while double French doors give access to two separate balconies.

The second floor offers a pair of bedrooms both sharing a bathroom. One features a flexible space that could be used as a study or dressing room. Furthermore, the third floor is entirely occupied by the principal bedroom suite, with a generous bathroom featuring a bath, two sinks and considerable storage.

The bedrooms have unusually good ceiling height, as well as spectacular and far-reaching rooftop views from the front of the house, along with delightful garden views from the rear. Otherwise, this beautifully maintained house is decorated in a traditional style that suits the historic setting.

The property includes a superb south-facing garden with planted borders and an unusually long lawn, originally designed and laid out by celebrated garden designer Penelope Hobhouse. It can be accessed from a paved patio with plenty of space for outdoor eating.

The house is set back from the street with a paved front garden, giving access to the garage and further two parking spaces.



img 1

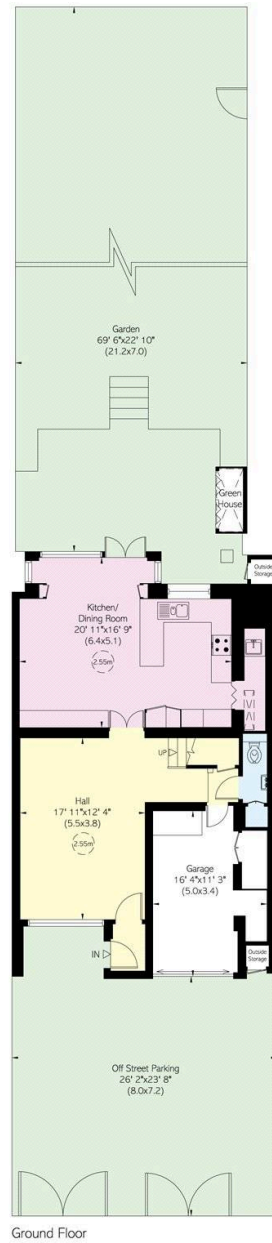
Reception Room

# The Neighbourhood

Campden Hill Square is one of the most historic squares in the neighbourhood, dating back to 1832. Celebrated residents have included the religious writer Evelyn Underhill and the war poet Siegfried Sassoon.

The square is a short walk away from Holland Park underground station, and the open spaces of Holland Park itself. In addition, the restaurants of Notting Hill are nearby, as well as the exclusive shops of Kensington High Street. The area is all well-served with independent schools.





**RUSSELL  
SIMPSON**

---

## Contact Us

+44 (0) 20 3761 9691

13 Kensington Square  
London  
W8 5HD

[kensington@russellsimpson.co.uk](mailto:kensington@russellsimpson.co.uk)

In accordance with the Property Mis-Description Act 1991, the following details have been prepared in good faith, and are not intended to constitute part of an offer or contract. Any information contained herein (whether in the text, plans or photographs) is given in good faith but should not be relied upon as being a statement of representation of fact. Nothing in these Particulars shall be deemed to be a statement that the property is in good condition or otherwise nor that any services or facilities are in good working order. Any measurements of distances referred to herein are approximate only. October 2021