



## **RUSSELL SIMPSON**

Delightful two-bedroom duplex flat  
in Kensington with bright and lofty  
reception room

CAMPDEN HILL GARDENS  
KENSINGTON W8

# Campden Hill Gardens

£1,495,000

BEDROOMS 2	INTERNAL 905 SQ FT	OUTDOOR —	COUNCIL RBKC
BATHROOMS 2	84 SQM	EPC D	COUNCIL TAX G
TENURE Share of freehold	LEASE LENGTH 989 YEARS	GROUND RENT —	SERVICE CHARGE £3,156 P/Y



## The Property

Beautiful flat with spacious interiors in an impressive building close to both Kensington High Street & Notting Hill Gate

This end-of terrace flat has bay windows on two sides, offering a double aspect and filling the rooms with light. It is presented in good condition with underfloor heating in the bathrooms and ground-floor reception room.



## Indoor Spaces

Entering the flat on the ground floor, the front hall leads through to a generous living area. This includes an open-plan kitchen with modern units and a breakfast area, flowing through to a large reception room. This room has high ceilings, wooden floors and an ornamental fireplace, adding to the sense of elegance and space. This floor also includes a utility room on the half-landing.







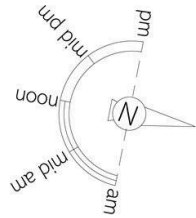
## The Bedrooms

The lower ground floor features a principal bedroom with an ensuite bathroom and inbuilt wardrobe space. The second bedroom has a bathroom next door with a bath and its own storage space.



## The Neighbourhood

The flat is part of an impressive Victorian townhouse with a recently refurbished façade. It occupies a quiet residential street lined with attractive terrace houses set back from the road. From here, the restaurants, shops and underground station of Notting Hill Gate are within easy reach. In addition, the open spaces of Holland Park are a short walk away.

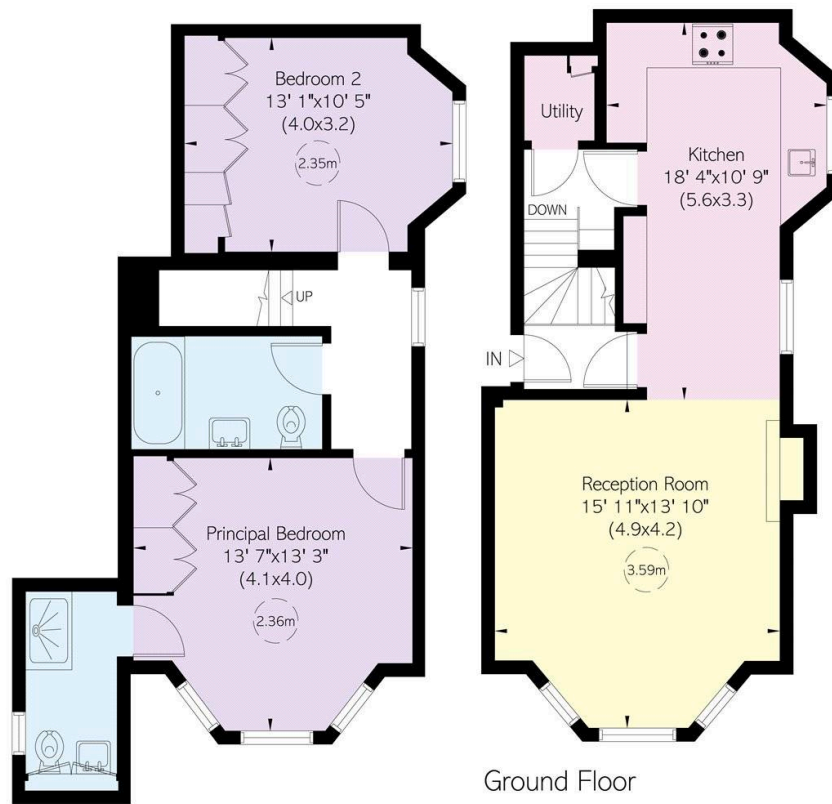


## Campden Hill Gardens, W8

**RUSSELL  
SIMPSON**

**Approximate Internal Area**  
905 sq ft / 84 sq m

This plan is for layout guidance only. Not drawn to scale unless stated. Windows and door openings are approximate. Whilst every care is taken in the preparation of this plan, please check all dimensions, shapes, and compass bearings before making any decisions reliant upon them.



Lower Ground Floor

Ground Floor

**RUSSELL  
SIMPSON**

---

## Contact Us

+44 (0) 20 3761 9691

13 Kensington Square  
London  
W8 5HD

[kensington@russellsimpson.co.uk](mailto:kensington@russellsimpson.co.uk)