



RUSSELL SIMPSON

Garden flat in a white stucco house
on a beautiful Kensington Street

BRUNSWICK GARDENS
KENSINGTON W8

Brunswick Gardens

Sold

BEDROOMS 2	INTERNAL 734 SQ FT	OUTDOOR 614 SQ FT	COUNCIL RBKC
BATHROOMS 1	68 SQM	EPC D	COUNCIL TAX F
TENURE Share of freehold	LEASE LENGTH 82 YEARS	GROUND RENT —	SERVICE CHARGE £2,500 P/Y



The Property

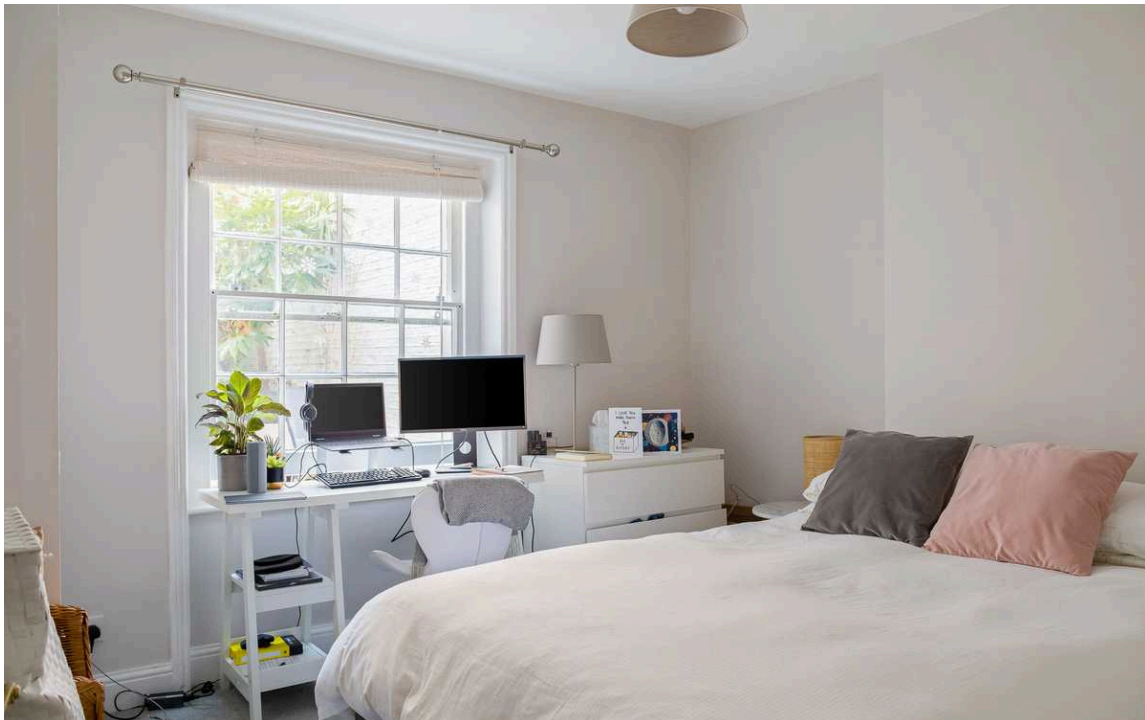
Two-bedroom flat with its own entrance, a short walk away from Notting Hill underground station



Indoor Spaces

Entering the flat on the lower ground floor, the lobby leads through to a generous reception room with wooden floors and a decorative fireplace. Beyond is a bedroom with garden views and a next-door bathroom.

The rear of the flat contains a kitchen with a door giving access to the garden. Finally, at the far end of the property, is a second bedroom also looking out on the garden.



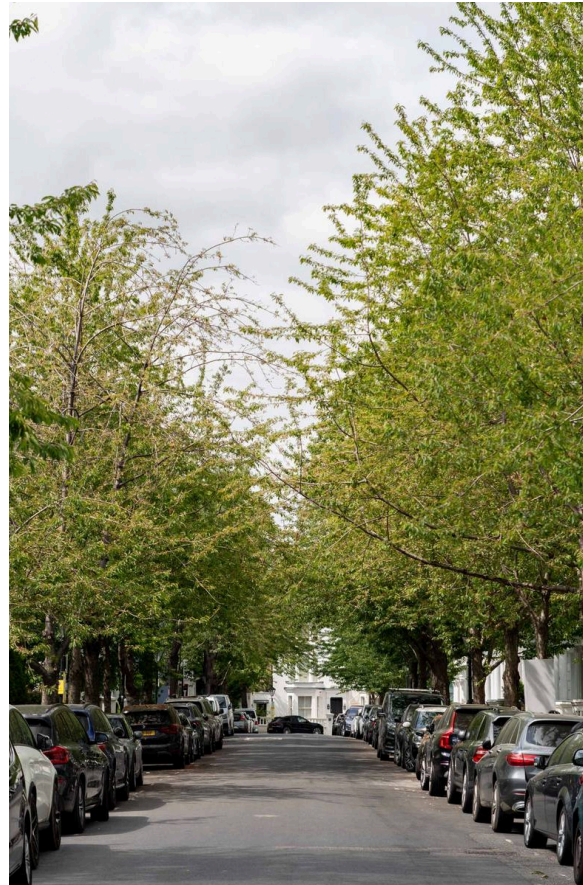
Outdoor Spaces

The property includes a paved garden with enough space for outdoor eating. In addition, it has its own door for access to the street and a vault for additional storage.

The Neighbourhood

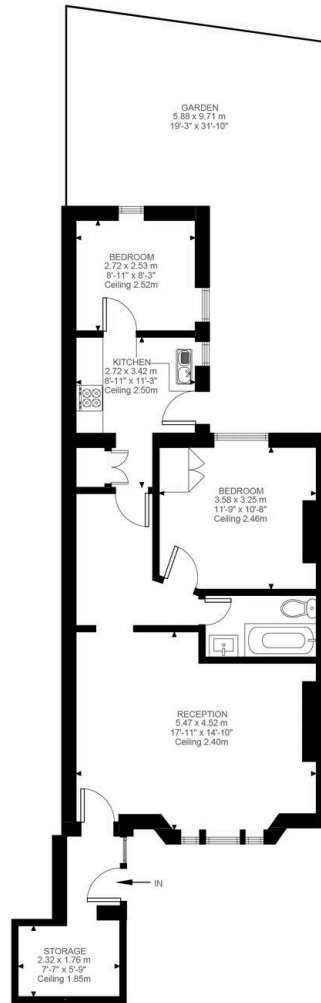
Brunswick Gardens is a tree-lined street in Kensington with white stucco houses built in the 1850s and 1860s. This is a central and sought-after address, kept safe thanks to neighbourhood security patrols.

Notting Hill underground station is a short walk away, and so too the open spaces of Kensington Gardens. In addition, the area is well-served with restaurants, bars and shops, with Portobello Road and Kensington High Street both in easy reach.



Brunswick Gardens, Kensington, W8

APPROXIMATE GROSS INTERNAL (LIVING) AREA
68.15 SQ.M / 734 SQ.FT



LOWER GROUND FLOOR
734 SQ.FT / 68.15 SQ.M

Disclaimer:

**RUSSELL
SIMPSON**

Contact Us

+44 (0) 20 7225 0277

Contact us

info@russellsimpson.co.uk

Sydney Street

+44 (0) 20 7225 0277

151A Sydney Street

London

SW3 6NT

chelsea@russellsimpson.co.uk

Kensington Square

+44 (0) 20 3761 9691

13 Kensington Square

London

W8 5HD

kensington@russellsimpson.co.uk