



RUSSELL SIMPSON

A superbly restored Grade II listed
family house

BROMPTON SQUARE
KNIGHTSBRIDGE SW3

Brompton Square

£11,950,000

BEDROOMS 6	INTERNAL 3,803 SQ FT	OUTDOOR 1,054 SQ FT	COUNCIL TAX RBKC, H
BATHROOMS 5	353 SQM	EPC —	TENURE Freehold



The Property

Occupying a fine location on the quiet north-east side of Brompton Square, enjoying garden square access. The house forms part of a terrace of houses built between c.1824 and 1839 by William Farlar and falls within the Brompton Conservation Area.

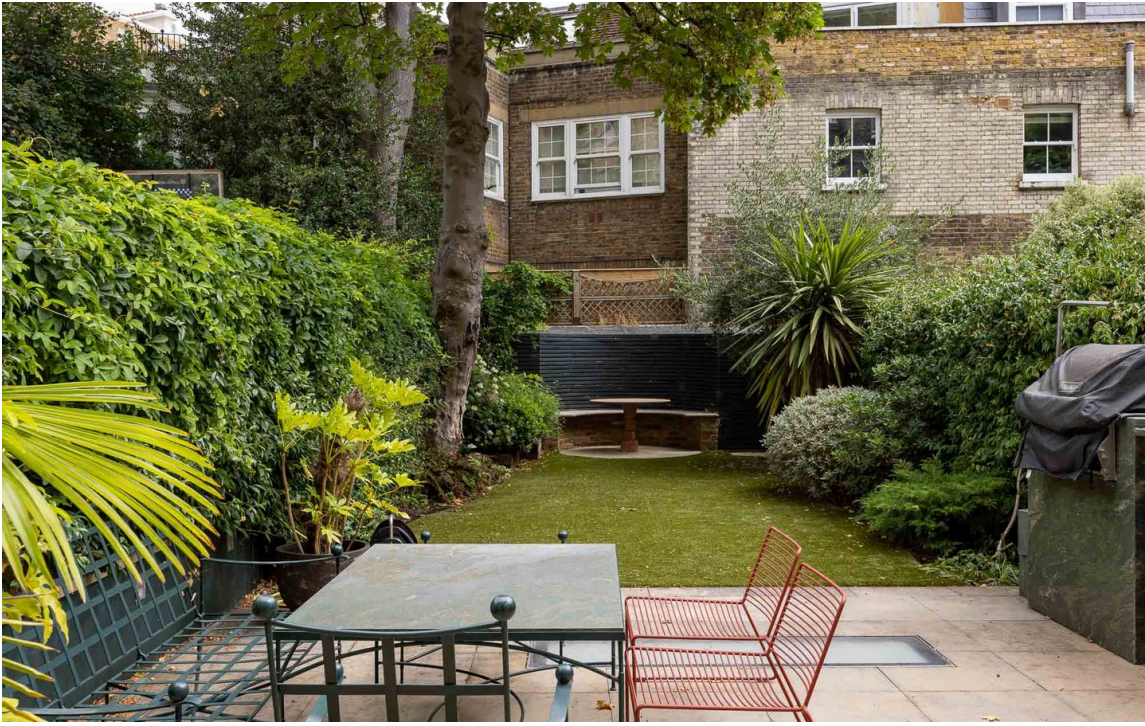


Indoor Spaces

The house underwent a complete refurbishment in 2013 to provide just under 371 sq m (4,000 sq ft) of living space with 21st Century technology, blending sympathetically with the original features which have been restored and incorporated into the design.



Outdoor Spaces





The Bedrooms

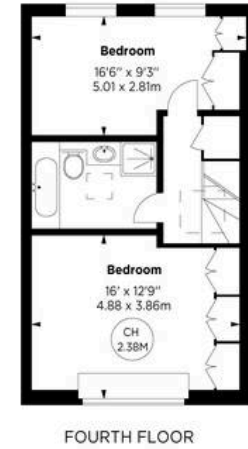
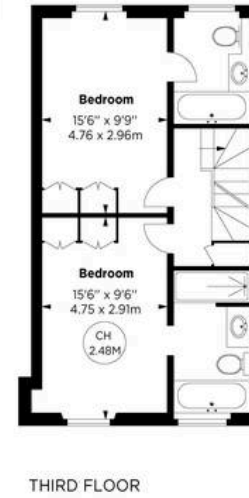
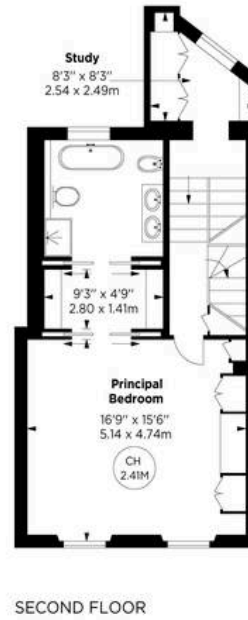
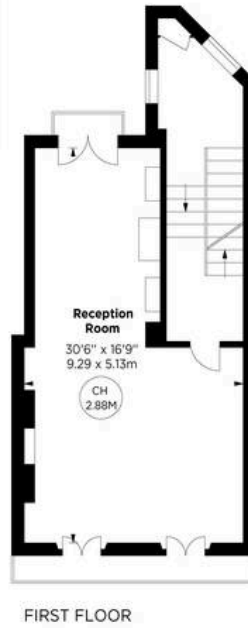
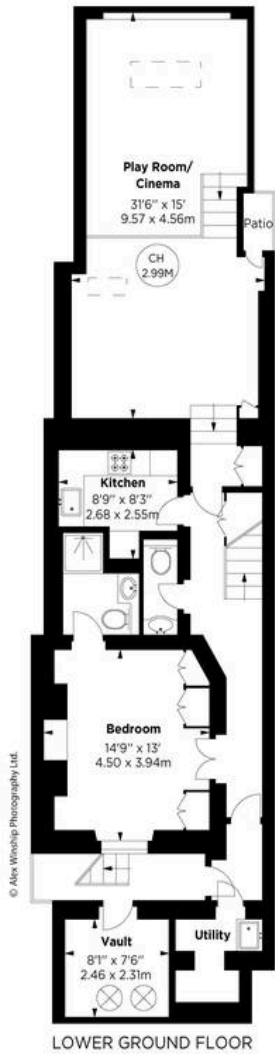
Arranged over lower ground, ground and 4 upper floors, it includes a very impressive first floor drawing room, a very well-appointed master bedroom suite on the second floor and a large split-level media room on the lower ground floor. The house benefits from westerly views over the square gardens (to which residents can have access) and its own 18.6m (61ft) garden.





The Neighbourhood

Brompton Square is located just north of the Brompton Road, west of Cheval Place and east of Cottage Place and the Brompton Oratory. The wide-open spaces of Hyde Park are located nearby, as are the world-famous shops, restaurant and entertainment facilities of both Knightsbridge and South Kensington



Brompton Square, SW3

APPROX. GROSS INTERNAL AREA *
3803 Sq Ft - 353.30 Sq M

Vault Area
64 Sq Ft - 5.95 Sq M

Shed Area
155 Sq Ft - 14.40 Sq M

Total Area
4022 Sq Ft - 373.64 Sq M

Key:
CH - Ceiling Height

This floorplan is for GUIDANCE ONLY and NOT FOR VALUATION purposes.



© Alex Winship Photography Ltd.

ALEX WINSHIP
Photography

*Floorplan for guidance only, not to scale or valuation purposes. It should not be relied upon as a substitute of fact. All measurements and areas are approximate and have been prepared in accordance with the current edition of the RICS Code of Measuring Practice.



**RUSSELL
SIMPSON**

Contact Us

+44 (0) 20 7225 0277

Contact us

info@russellsimpson.co.uk

Sydney Street

+44 (0) 20 7225 0277

151A Sydney Street
London
SW3 6NT

chelsea@russellsimpson.co.uk

Kensington Square

+44 (0) 20 3761 9691

13 Kensington Square
London
W8 5HD

kensington@russellsimpson.co.uk