

RUSSELL SIMPSON

Spectacular three-bedroom lateral
apartment with two terraces in the
heart of Belgravia

BELGRAVE PLACE
BELGRAVIA SW1X

Belgrave Place

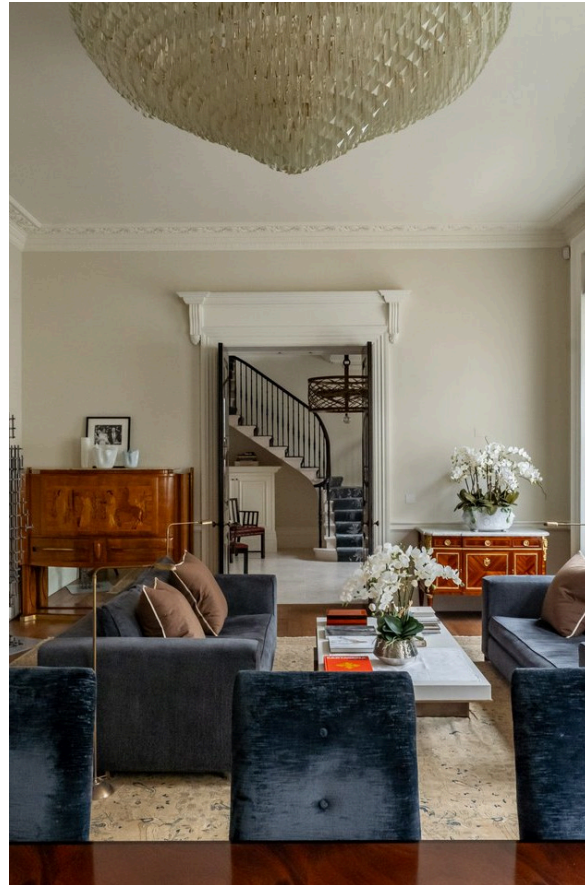
£8,950,000

BEDROOMS 3	INTERNAL 3,474 SQ FT	OUTDOOR 610 SQ FT	COUNCIL Westminster City
BATHROOMS 3	322 SQM	EPC C	COUNCIL TAX H
TENURE Leasehold	LEASE LENGTH 173 YEARS	GROUND RENT —	SERVICE CHARGE —



The Property

Meticulously refurbished triplex flat with lofty interiors in a white stucco townhouse on a prestigious street

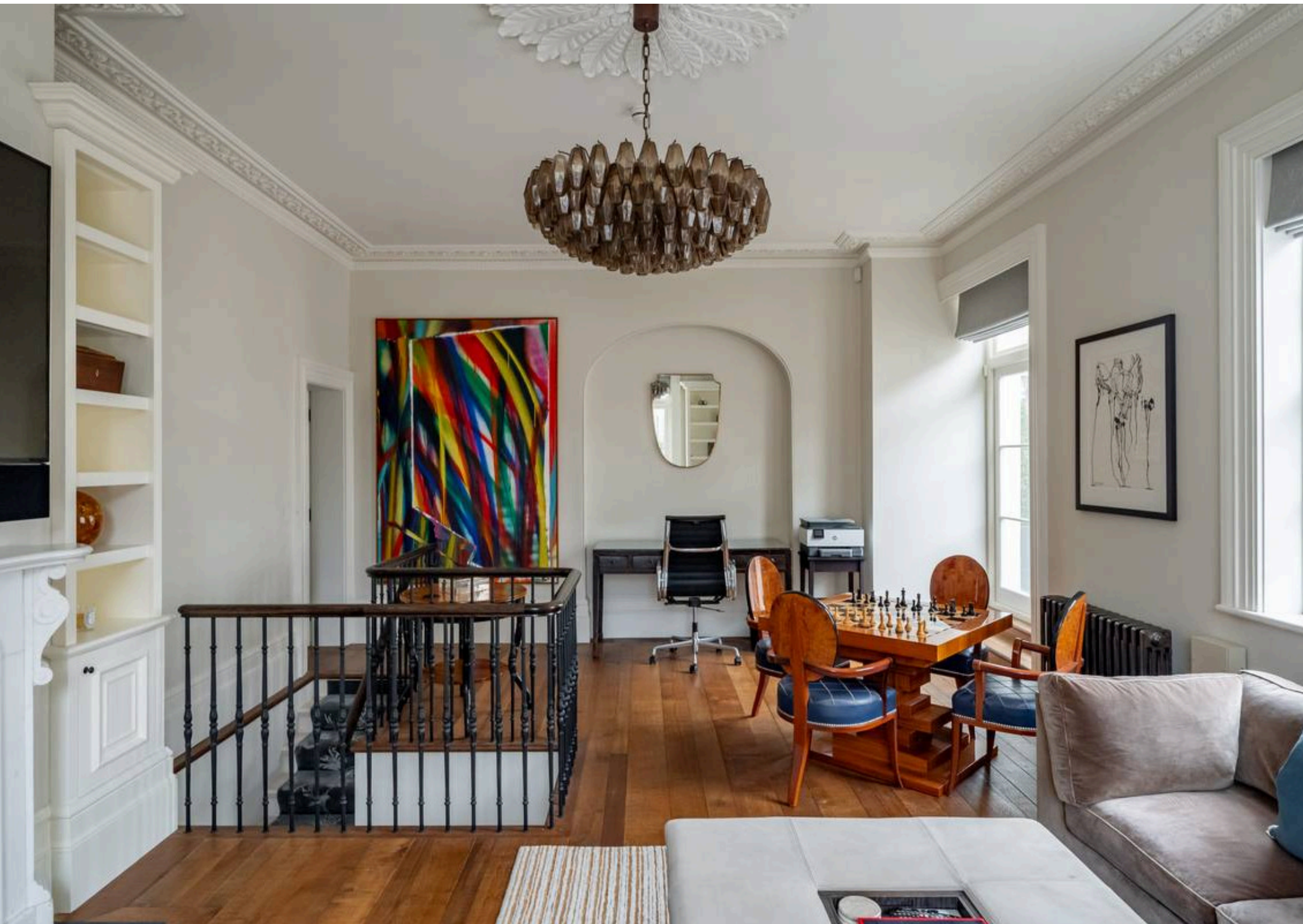


img 1

Terrace

img 2

Drawing Room



Indoor Spaces

Stepping into the property on the ground floor, the front door opens onto a grand staircase hall. Double doors lead through to a lofty drawing room with full length sash windows, an ornate cornice and a carved feature fireplace. This room has enough space for separate dining and seating areas, while the fitted kitchen is conveniently positioned next door. The first floor features an informal sitting room that could also be used as a home office. Double French doors open out onto a pair of terraces, ensuring this room is bright throughout the day.



img 1

Kitchen

img 2

Sitting Room



The Bedrooms

The lower ground floor consists of three double bedrooms. The substantial principal bedroom has a walk-in wardrobe and an ensuite bathroom with both shower and bath. The other two bedrooms are also ensuite and both have inbuilt storage. This floor also contains a well-appointed utility room with additional storage.

img 1

Principal Bedroom



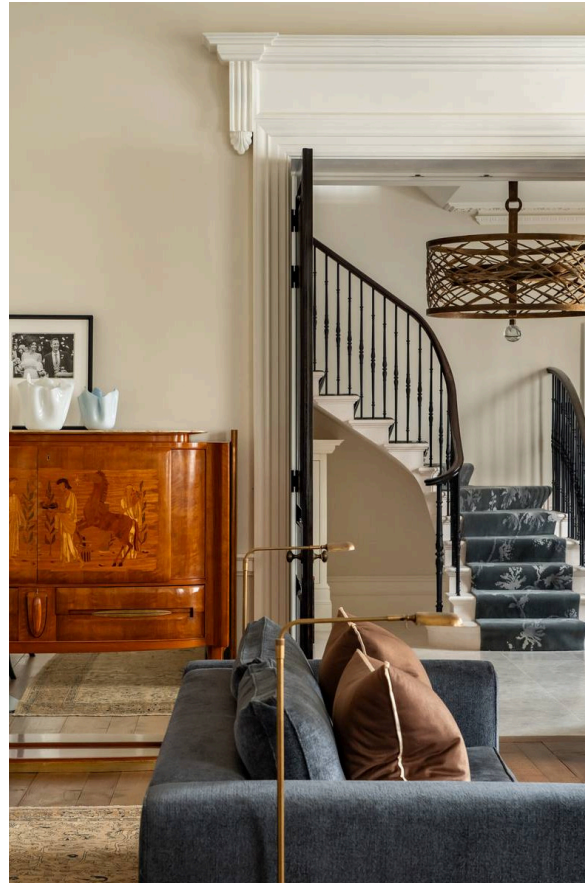


Outdoor Spaces

The flat includes a pair of terraces, one of them with wooden decking and enough room for outdoor entertaining. The property also has access to a storage vault.

The Design

The property has been recently refurbished to an exceptionally high standard. The interiors blend classical and contemporary design details to create sophisticated and opulent spaces.





The Neighbourhood

Belgrave Place is a prestigious street running between Eaton Square and Belgrave Square. It is lined with large, white stucco townhouses built in the mid-nineteenth century. From here, the exceptional restaurants and shops of Chelsea and Knightsbridge are within walking distance. Sloane Square and Victoria underground stations are also nearby.



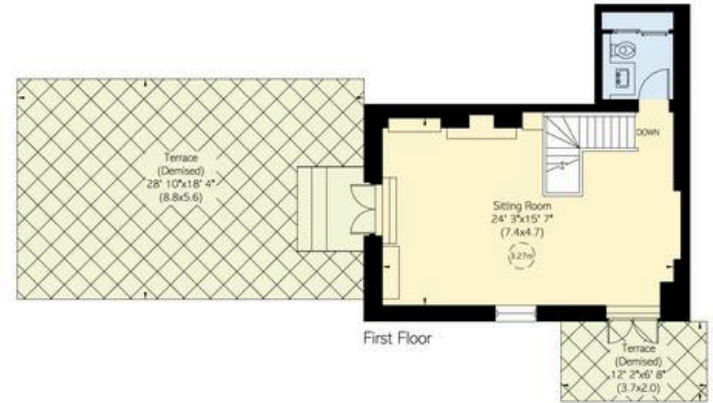
Belgrave Place, SW1

RUSSELL SIMPSON

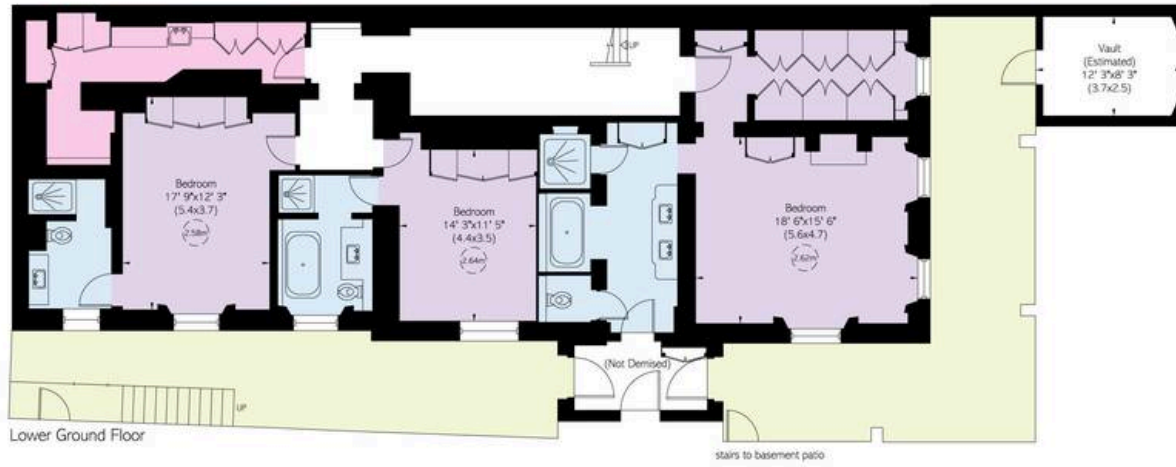
Approximate Internal Area
3,474 sq ft / 323 sq m

Including estimated vault
96 sq ft / 9 sq m
Outside Area
600 sq ft / 57 sq m

This plan is for layout guidance only. Not drawn to scale unless stated. Windows and door openings are approximate. Whilst every care is taken in the preparation of this plan, please check all dimensions, shapes, and compass bearings before making any decisions reliant upon them.



First Floor



Lower Ground Floor

stairs to basement patio



Ground Floor

**RUSSELL
SIMPSON**

Contact Us

+44 (0) 20 7225 0277

Contact us

info@russellsimpson.co.uk

Sydney Street

+44 (0) 20 7225 0277

151A Sydney Street
London
SW3 6NT

chelsea@russellsimpson.co.uk

Kensington Square

+44 (0) 20 3761 9691

13 Kensington Square
London
W8 5HD

kensington@russellsimpson.co.uk