



## **RUSSELL SIMPSON**

Elegant three-bedroom flat with  
communal garden access moments  
away from the Thames

BEAUFORT MANSIONS  
CHELSEA SW3

Beaufort Mansions

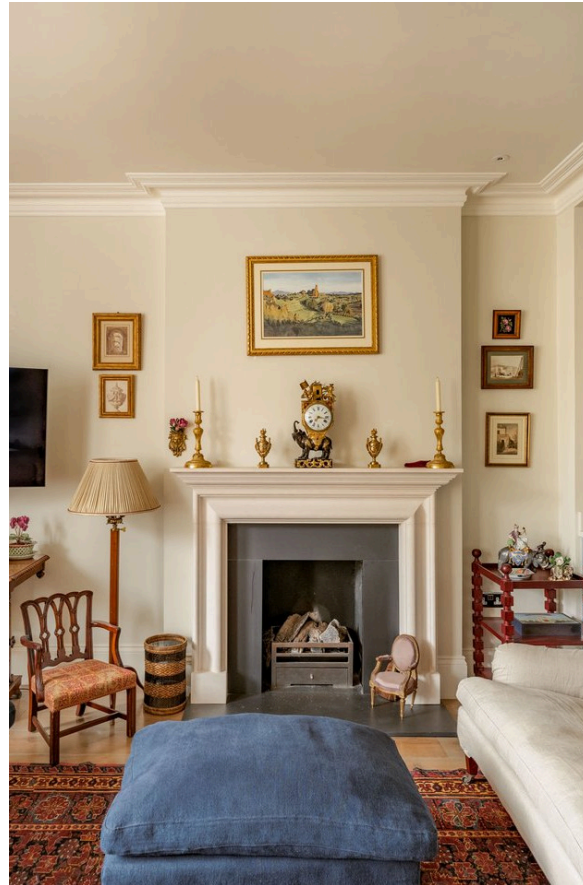
£2,100,000

<div>BEDROOMS</div> <div>3</div>	<div>INTERNAL</div> <div>1,276 <small>SQ FT</small></div> <div>118 <small>SQM</small></div>	<div>OUTDOOR</div> <div>180 <small>SQ FT</small></div>	<div>COUNCIL</div> <div>RBKC</div>
<div>BATHROOMS</div> <div>2</div>		<div>EPC</div> <div>C</div>	<div>COUNCIL TAX</div> <div>G</div>
<div>TENURE</div> <div>Leasehold</div>	<div>LEASE LENGTH</div> <div>986 <small>YEARS</small></div>	<div>GROUND RENT</div> <div>—</div>	<div>SERVICE CHARGE</div> <div>—</div>

# The Property

Tasteful property with traditional interiors in a beautiful mansion block close to the King's Road

The flat is decorated in a tasteful traditional style and presented in good condition. Wooden floors throughout add to the sense of elegance.





## Indoor Spaces

Entering the flat on the ground floor, the front hall flows through to a generous living space. This includes an open-plan kitchen with fitted units, as well as separate dining and seating areas. A bay window brings in added brightness.



## The Principal Bedroom

The other side of the property consists of three bedrooms. The principal bedroom has an ensuite bathroom with a bath and a dressing room with considerable wardrobe space.



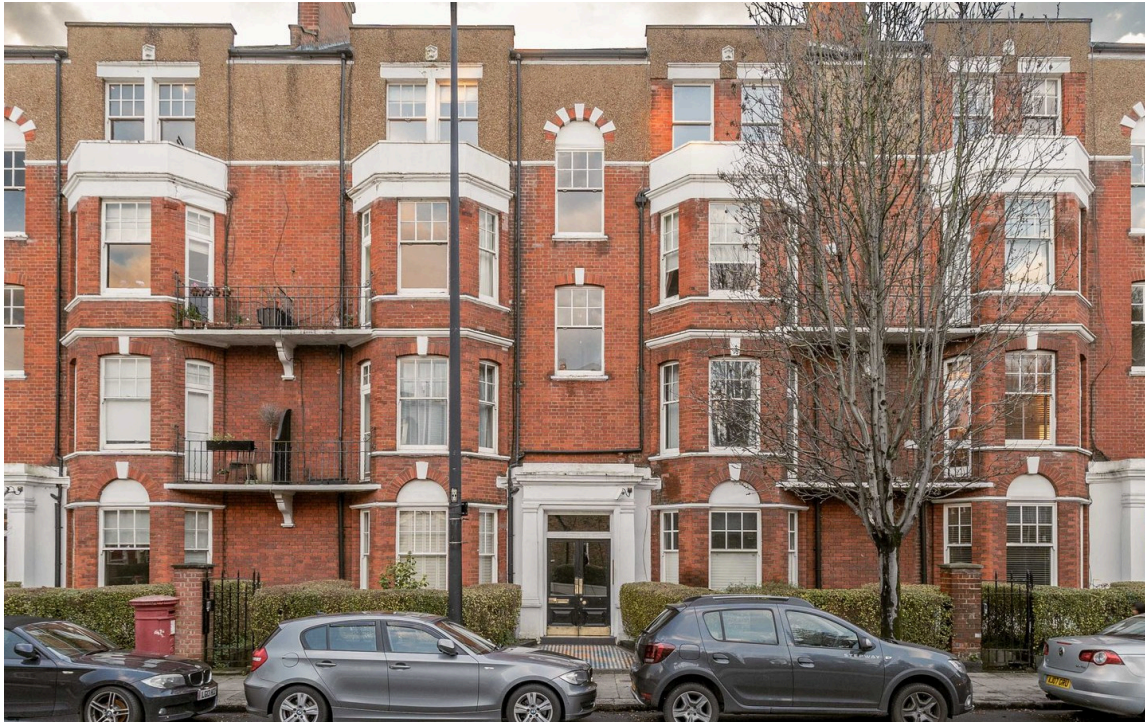


## Further Bedrooms

The other two bedrooms share a second bathroom, and one of them has French doors leading out onto the patio.







## Outdoor Spaces & The Neighbourhood

The flat offers a south-west facing rear patio with enough space for outdoor seating and direct access to the building's communal garden.

Beaufort Mansions is an attractive red-brick mansion block midway between the King's Road with Battersea Bridge. From here, the neighbourhood's many restaurants and shops are within easy reach. Furthermore, Imperial Wharf and Fulham Broadway stations are both in walking distance, while a riverbus service leaves from Cadogan Pier. Finally, the open spaces of Battersea Park are easily reached on the opposite side of the Thames.

## Beaufort Mansions, SW<sub>3</sub>

**Approximate Internal Area**  
1,276 sq ft/ 119 sq m

**Outside Area**  
181 sq ft/ 17 sq m

**RUSSELL  
SIMPSON**

This plan is for layout guidance only.  
Not drawn to scale unless stated. Windows  
and door openings are approximate. Whilst  
every care is taken in the preparation of this  
plan, please check all dimensions, shapes,  
and compass bearings before making any  
decisions reliant upon them.





**RUSSELL  
SIMPSON**

---

## Contact Us

+44 (0) 20 7225 0277

151A Sydney Street  
London  
SW3 6NT

[chelsea@russellsimpson.co.uk](mailto:chelsea@russellsimpson.co.uk)

In accordance with the Property Mis-Description Act 1991, the following details have been prepared in good faith, and are not intended to constitute part of an offer or contract. Any information contained herein (whether in the text, plans or photographs) is given in good faith but should not be relied upon as being a statement of representation of fact. Nothing in these Particulars shall be deemed to be a statement that the property is in good condition or otherwise nor that any services or facilities are in good working order. Any measurements of distances referred to herein are approximate only. October 2021