



RUSSELL SIMPSON

A beautifully presented, three to four bedroom family home in this wide and attractive tree lined street of Chelsea Green

ASTELL STREET
CHELSEA SW3

Astell Street

Sold

BEDROOMS 4	INTERNAL 3,351 SQ FT	OUTDOOR —	COUNCIL TAX CHE, H
BATHROOMS 3	311 SQM	EPC E	TENURE Freehold

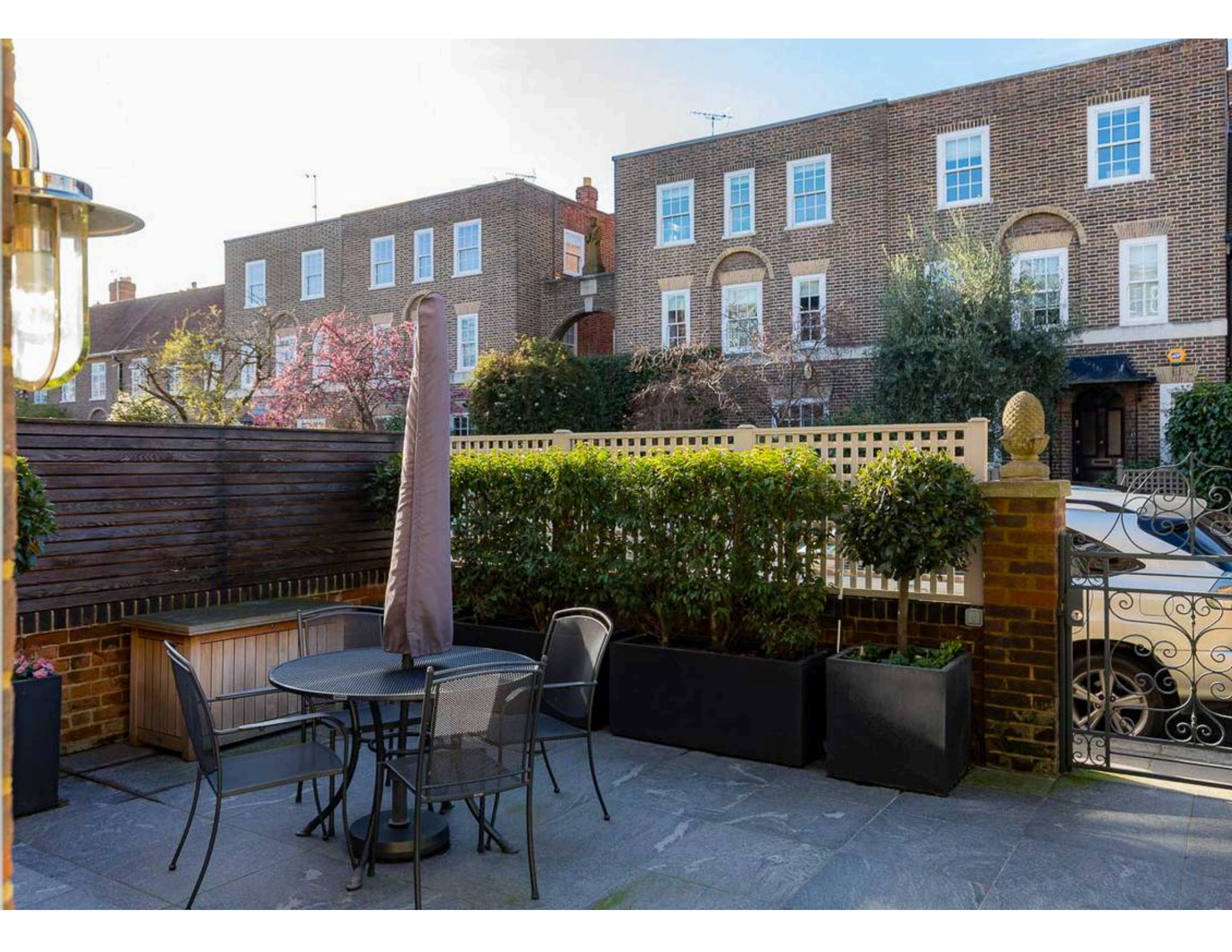




The Property

On four floors only, this lateral houses offers an excellent array of comfortable accommodation to include four double bedrooms, a large study, drawing room, large kitchen breakfast room and tv room. The property benefits from a spacious gym and laundry room as well as an enormous amount of storage.





The Neighbourhood

Astell Street is well known for its wide low built houses, which are conveniently situated just north of King's Road. It enjoys excellent local amenities, and access to the underground at both Sloane Square and South Kensington.

Astell Street, SW3

Gross internal area (approx.)

311 Sq m (3351 Sq ft) Including Wine Cellar, Store's and Under 1.5m
 306 Sq m (3291 Sq ft) Excluding Wine Cellar, Store's and Under 1.5m

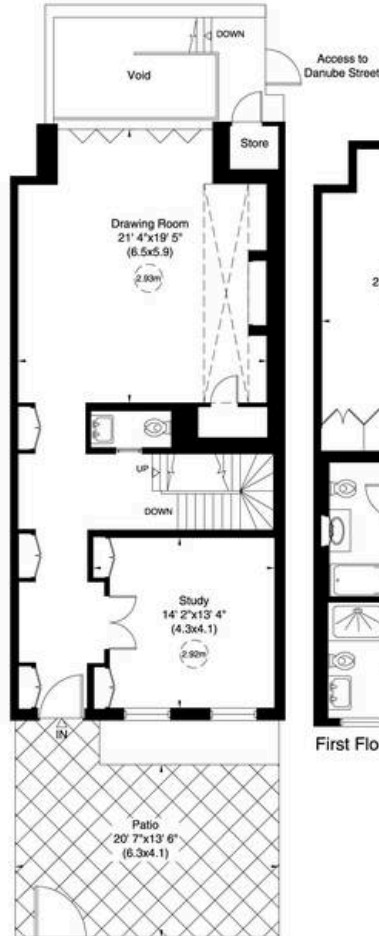
For identification only, Not to Scale



capital.020 8871 7722



Basement



Ground Floor



First Floor



Second Floor

Not to scale, for guidance only and must not be relied upon as a statement of fact. All measurements and areas are approximate only (and have been prepared in accordance with the current edition of the RICS Code of Measuring Practice).

**RUSSELL
SIMPSON**

Contact Us

+44 (0) 20 7225 0277

Contact us

info@russellsimpson.co.uk

Sydney Street

+44 (0) 20 7225 0277

151A Sydney Street
London
SW3 6NT

chelsea@russellsimpson.co.uk

Kensington Square

+44 (0) 20 3761 9691

13 Kensington Square
London
W8 5HD

kensington@russellsimpson.co.uk