



RUSSELL SIMPSON

Outstanding Notting Hill apartment
with access to Arundel & Elgin
communal gardens

ARUNDEL GARDENS
NOTTING HILL W11

Arundel Gardens

Sold

BEDROOMS 1	INTERNAL 605 SQ FT	OUTDOOR —	COUNCIL —
BATHROOMS 1	56 SQM	EPC C	COUNCIL TAX D
TENURE Share of freehold	LEASE LENGTH 952 YEARS	GROUND RENT —	SERVICE CHARGE £2,538 P/Y

The Property

One bedroom flat on a desirable street in the heart of Notting Hill having been refurbished throughout to a very high standard.





Indoor Spaces

Entering the flat on the second floor, the front door opens onto a generous open-plan kitchen and reception room, with enough space for separate dining and seating areas. Next door is a bathroom with a full bathtub, and then a double bedroom with inbuilt storage and a sash window looking out over the communal garden.



The Bedroom



The Design

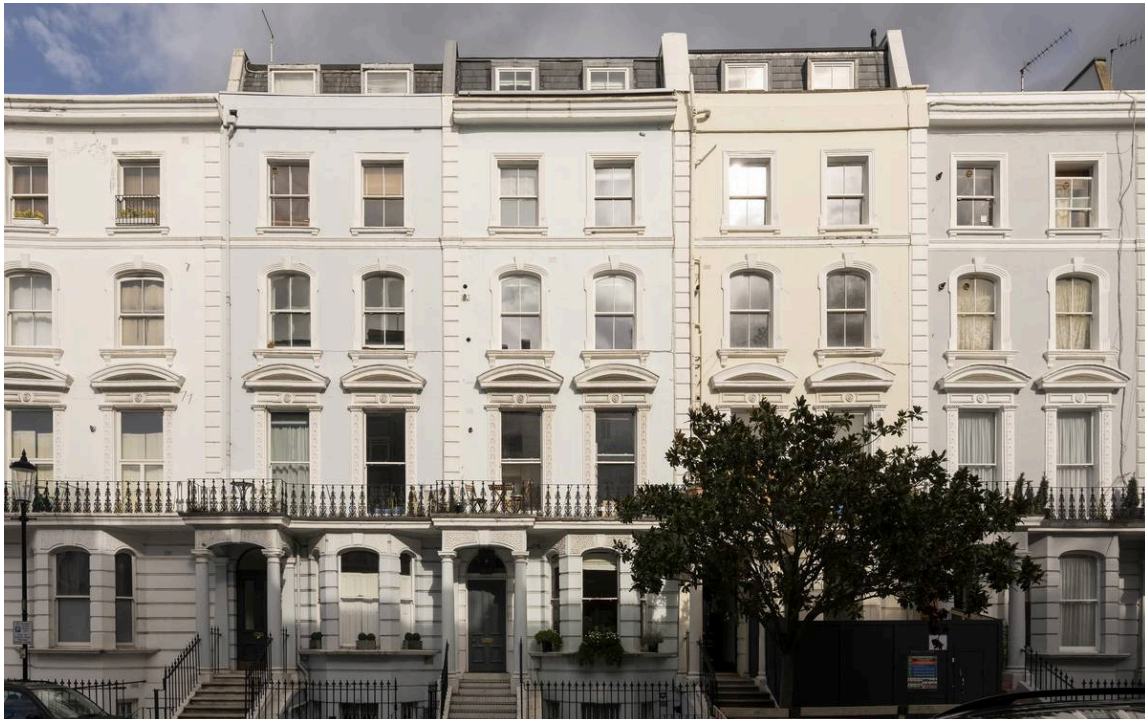




The Neighbourhood

Residents have the right to access the communal garden square behind the property.

Arundel Gardens is a beautiful and sought-after street lined with stucco townhouses painted pastel colours. From here, Portobello Road is close, with its range of restaurants, shops and bars, while Westbourne Park and Notting Hill Gate underground stations are both within walking distance.

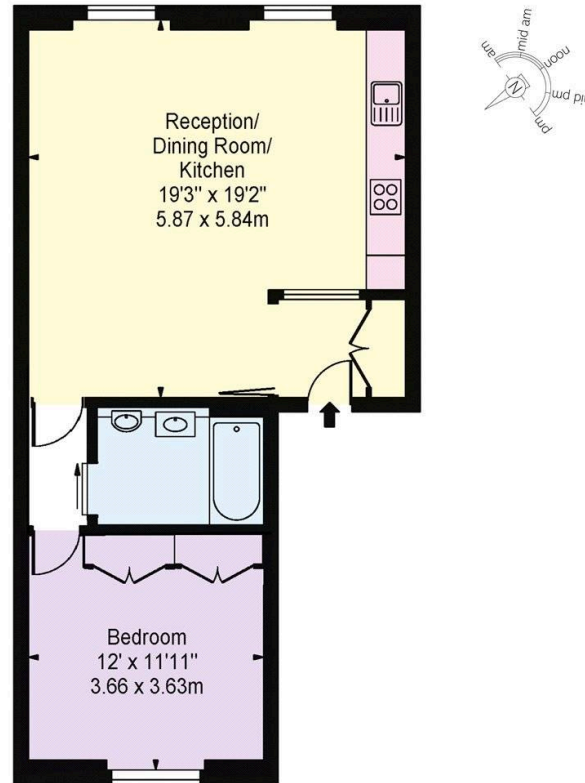


Arundel Gardens, W11

Approximate gross internal area
605 sq ft / 56.2 sq m

**RUSSELL
SIMPSON**

This plan is for layout guidance only. Not drawn to scale unless stated. Windows and door openings are approximate. Whilst every care is taken in the preparation of this plan. Please check all dimensions, shapes, and compass bearings before making any decisions reliant upon them.



SECOND FLOOR

**RUSSELL
SIMPSON**

Contact Us

+44 (0) 20 7225 0277

Contact us

info@russellsimpson.co.uk

Sydney Street

+44 (0) 20 7225 0277

151A Sydney Street
London
SW3 6NT

chelsea@russellsimpson.co.uk

Kensington Square

+44 (0) 20 3761 9691

13 Kensington Square
London
W8 5HD

kensington@russellsimpson.co.uk