



RUSSELL SIMPSON

The house measures 6,675 sq ft in total with a lift that services all but the top floor

AIRLIE GARDENS
KENSINGTON W8

Airlie Gardens

Sold

BEDROOMS 5	INTERNAL 6,675 SQ FT 620 SQM	OUTDOOR —	COUNCIL TAX KEN
BATHROOMS 5		EPC C	TENURE Freehold

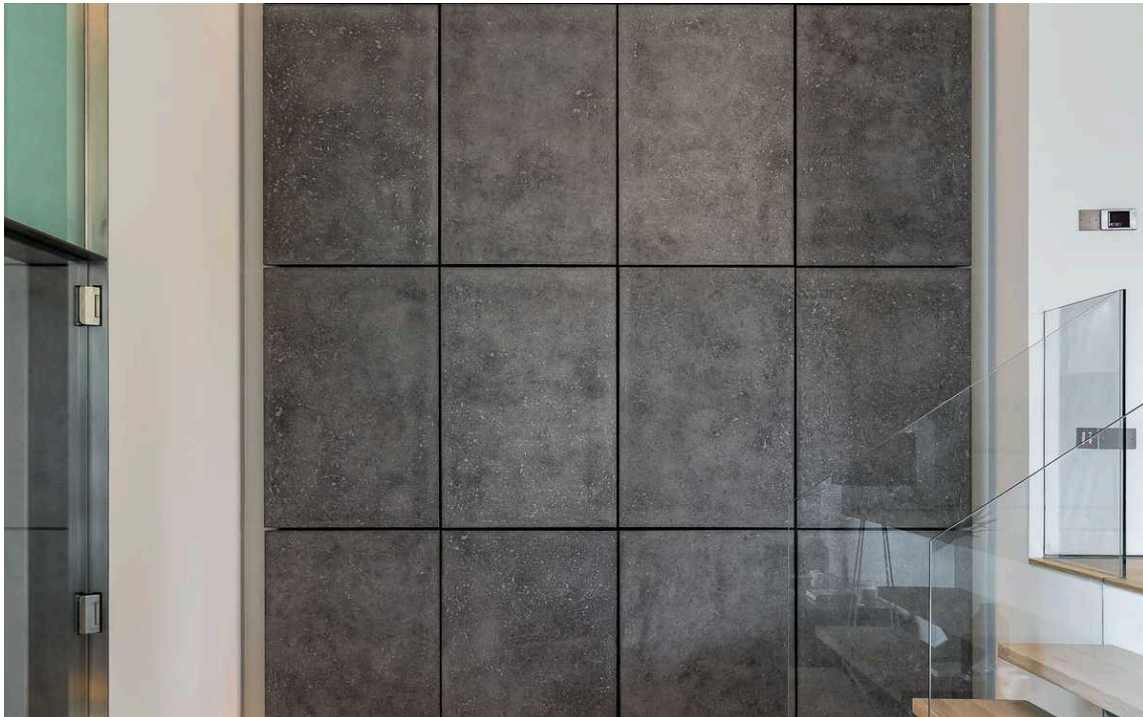




The Property

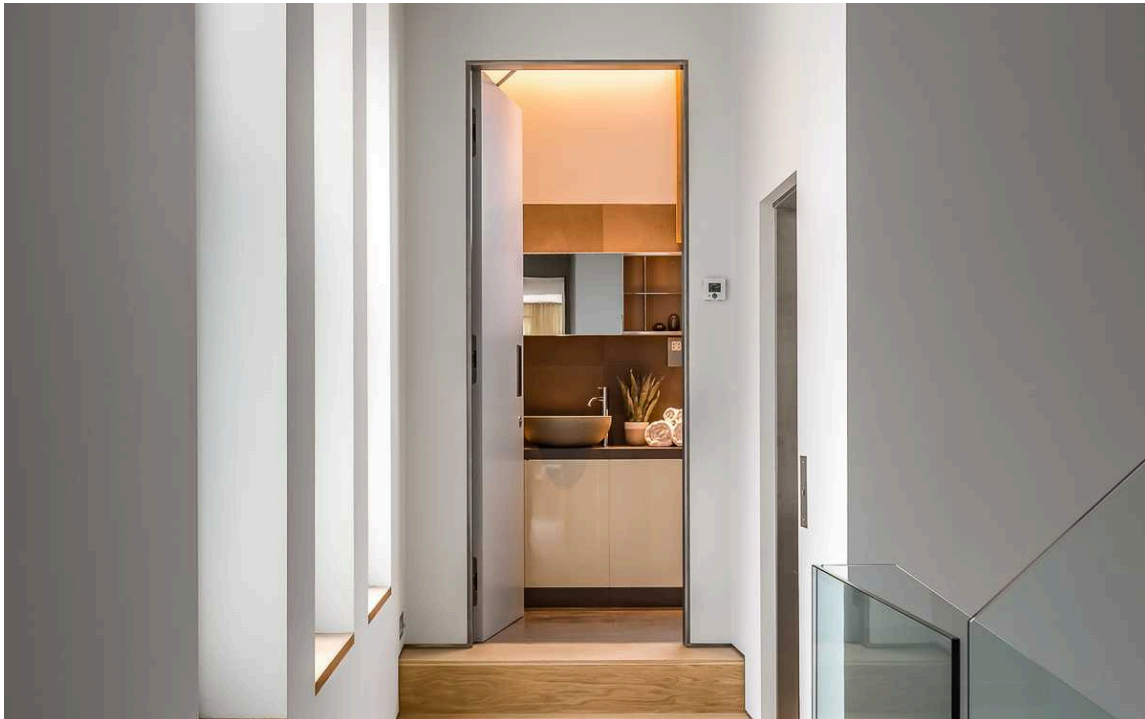
There is ample living space with a selection of wonderful rooms on the first, ground and lower ground floors with a swimming pool, sauna, gym and cinema areas. At present the house is laid out with four principle bedrooms and one further bedroom that was previously used as a housekeeper's room in the lower ground floor.

The house also includes access to a secure underground parking space, which has 72 years left on the lease.



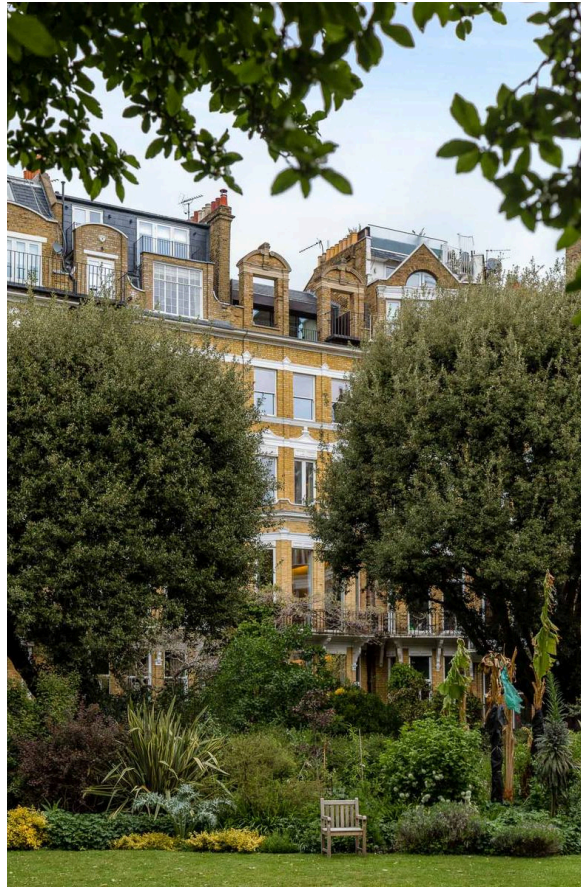


The Bedrooms



The Neighbourhood

The position of this building is quietly located off Campden Hill Road and with a due southerly aspect to the rear.

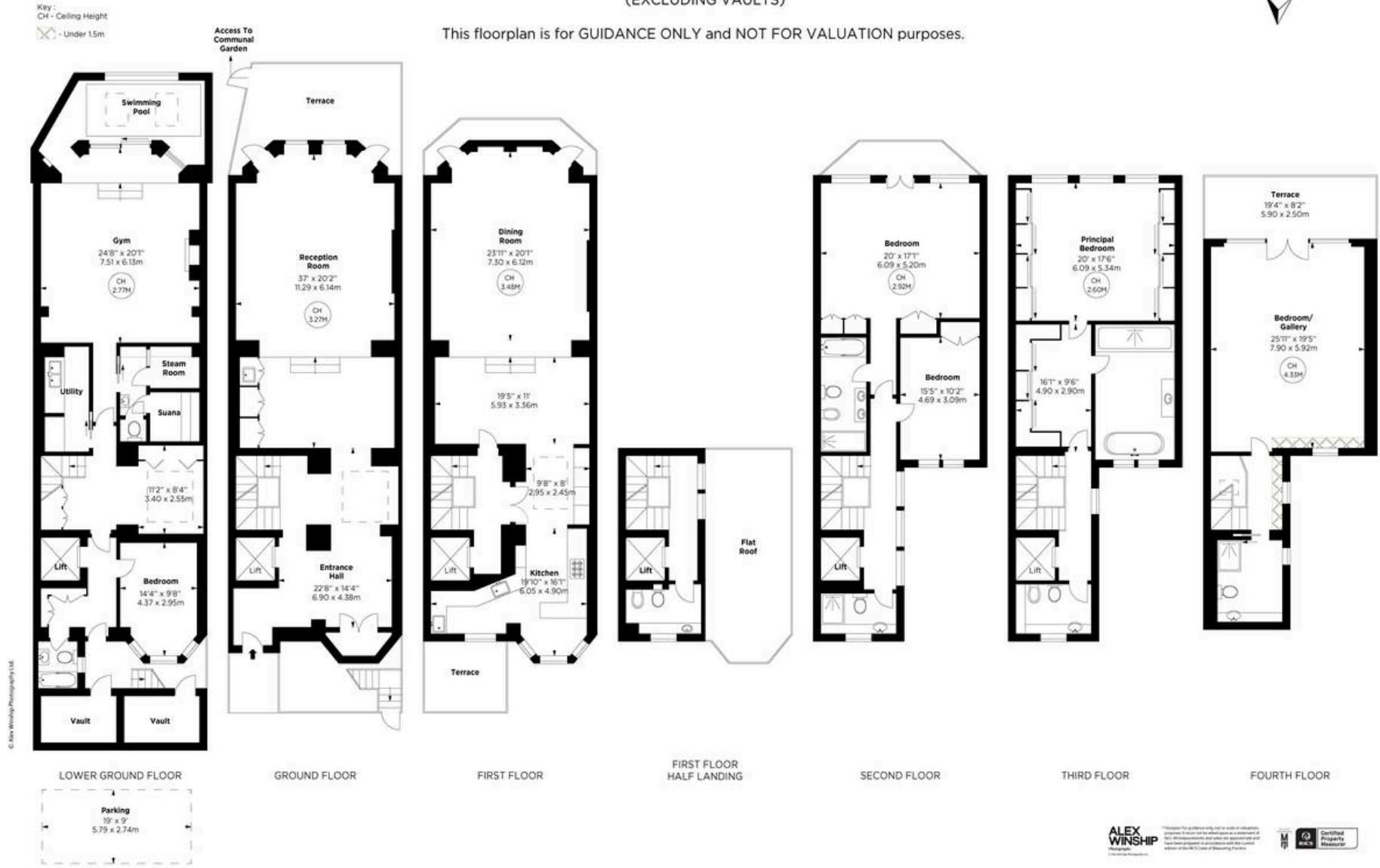


Airlie Gardens, W8

APPROX. GROSS INTERNAL AREA *
6675 Sq Ft - 608.72 Sq M
(EXCLUDING VAULTS)



This floorplan is for GUIDANCE ONLY and NOT FOR VALUATION purposes.



**RUSSELL
SIMPSON**

Contact Us

+44 (0) 20 7225 0277

Contact us

info@russellsimpson.co.uk

Sydney Street

+44 (0) 20 7225 0277

151A Sydney Street

London

SW3 6NT

chelsea@russellsimpson.co.uk

Kensington Square

+44 (0) 20 3761 9691

13 Kensington Square

London

W8 5HD

kensington@russellsimpson.co.uk